
GuitarPCB Presents

Band of Gypsies

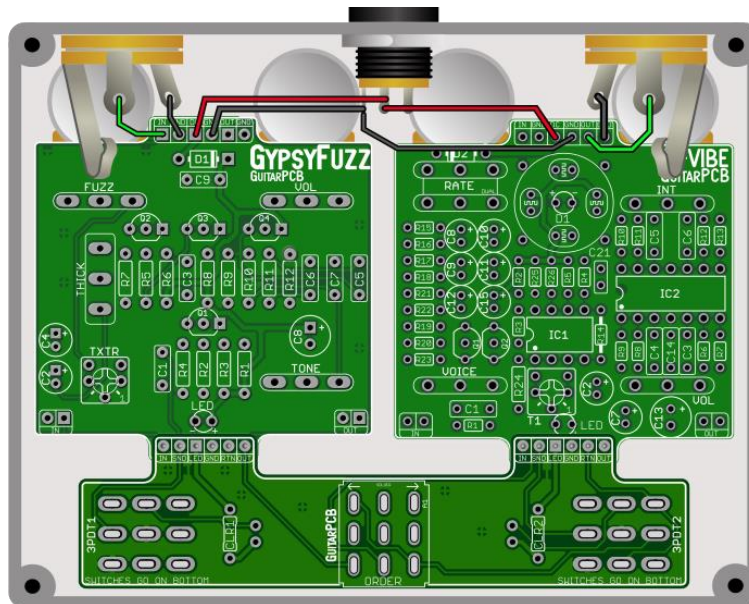
This Dual Combo pairs the Gypsy Fuzz with the VIBE to deliver a versatile, Hendrix-inspired tonal experience. From responsive, volume-sensitive fuzz to deep, syrupy modulation, the combination offers a wide range of expressive sounds. With built-in order switching, you can explore multiple tonal textures and capture that unmistakable Band of Gypsies-style character.

The Gypsy Fuzz delivers a fiery, expressive fuzz inspired by Hendrix's iconic tone. It responds exceptionally well to your guitar's volume control, cleaning up into dynamic, articulate textures. Combined with the VIBE, it nails that classic Band of Gypsies swirl and feel.

VIBE delivers lush, syrupy Uni-Vibe-inspired tones with Intensity, Rate, Volume, and Voice controls for easy dialing of your perfect sound. From subtle movement to deep swirl, it pairs perfectly with the Gypsy Fuzz for that classic Band of Gypsies-style tone. Built-in order switching expands the range of tonal possibilities when used together.

Key Feature:

- Built-in order switching for endless tonal possibilities, to easily reverse the signal path. Use a "Stubby" or short bat switch.

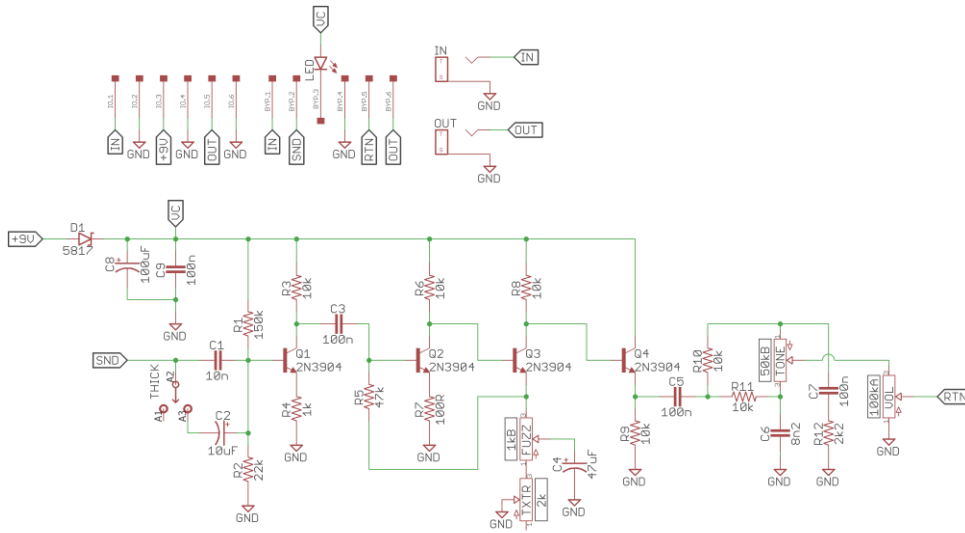


Order switching is built-in, with pin header connections making wiring a breeze.

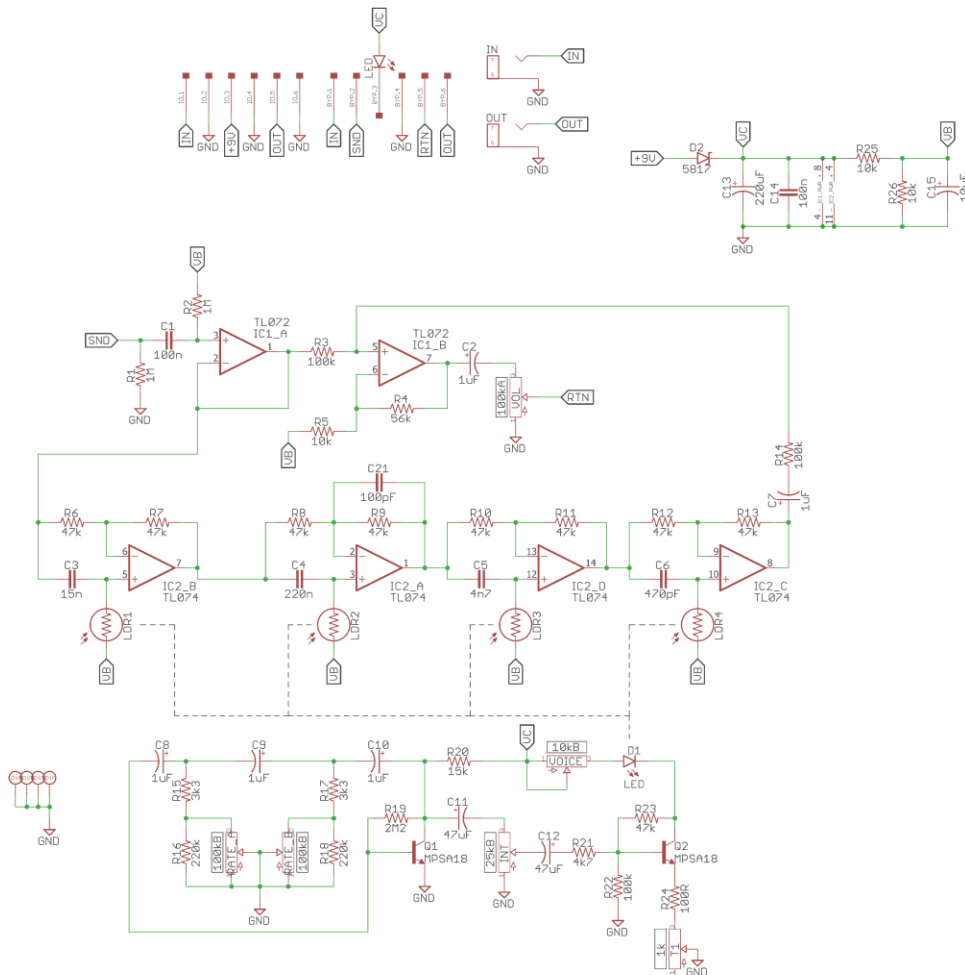
Ideal for a 1590BB2 enclosure, featuring the same dimensions as a 1590BB but with 125B clearance for jacks.

Included with each Dual Combo purchase. – (2) Mainboards, (2) pin headers, (1) Dual wiring board.

Schematic Gypsy Fuzz:



Schematic The Vibe:



Bill of Materials Gypsy Fuzz:

Part	Value	Part	Value	Part	Value	Part	Value
R1	150k	R9	10k	C4	47uF	VOL	A100K
R2	22k	R10	10k	C5	100n	FUZZ	B1K
R3	10k	R11	10k	C6	8n2	TONE	B50K
R4	1k	R12	2k2	C7	100n	TXTR	Trim 2K
R5	47k			C8	100uF	THICK	SPDT On/On
R6	10k	C1	10n	C9	100n	Q1 - Q4	2N3904
R7	100R	C2	10uF			LED	Status
R8	10k	C3	100n	D1	1N5817	*CLR x1	1k8 - 4k7

Bill of Materials The Vibe:

Part	Value	Part	Value	Part	Value	Part	Value	Part	Value
R1	1M	R13	47k	R25	10k	C10	1uF	IC1	TL072
R2	1M	R14	100k	R26	10k	C11	47uF	IC2	TL074
R3	100k	R15	3k3			C12	47uF		
R4	56k	R16	220k	C1	100n	C13	220uF	T1	1K Trim
R5	10k	R17	3k3	C2	1uF	C14	100n		
R6	47k	R18	220k	C3	15n	C15	10uF	LDR 1 - 4	KE-1072
R7	47k	R19	2M2	C4	220n	C21	100pF	*CLR	1k8-4k7
R8	47k	R20	15k	C5	4n7				
R9	47k	R21	4k7	C6	470pF	D1	Status LED	INT	B25K
R10	47k	R22	100k	C7	1uF	D2	1N5817	RATE	B100K Dual
R11	47k	R23	47k	C8	1uF			VOL	A100K
R12	47k	R24	100R	C9	1uF	Q1 - Q2	MPSA18	VOICE	B10k

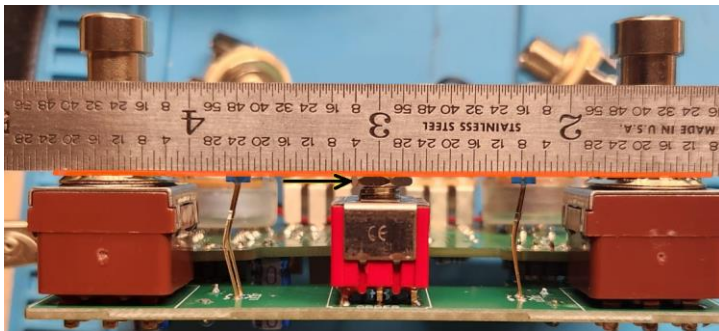
* You'll need a 3PDT toggle switch On/On (solder lug version) with a short shaft (stubby) for order switching on the dual wiring board PCB.

Build Notes:

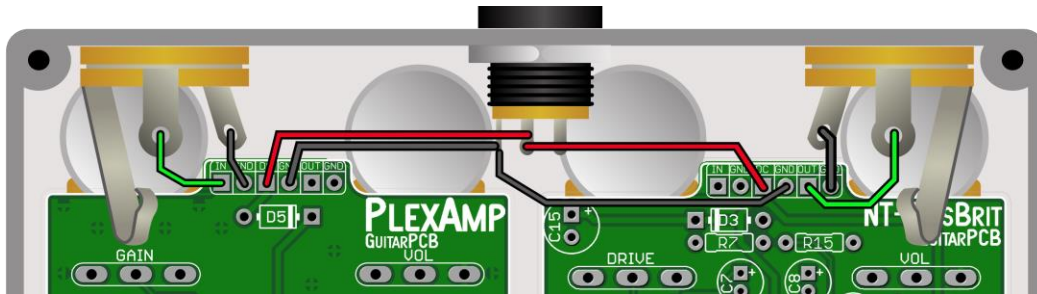
1. Solder the short side of both pin headers to the top of each main board, pointing upward. Next, solder all three switches, and (CLRs), to the dual wiring board. Dry hang the LEDs (optional) if mounting to the dual wiring board.
2. Since the dual wiring board offers an additional LED location for each circuit, you can choose your preferred setup. Whichever option you pick, solder a small jumper on the unused LED pads. (CLRs) are essential regardless of the location choice.
3. Remove both nuts on each of the 3PDT foot switches for the best height match. Adjust the height of the inner Order Switch adjustment nut so it is level with the foot switches' height relative to the enclosure. Do not over-tighten the outer Switch nut.
4. Install the wiring board by sliding it over both pin headers. Once the foot switches and toggle switch are tightened within the enclosure, proceed to solder the long side of the pin header to the dual wiring board.
5. * There are two (CLR) Current Limiting Resistors crucial to protect and adjust the brightness of their corresponding status LED. You may use a value of 1k8 (Bright) to 4k7 (Dim).
6. When assembling the VIBE PCB, hold off on installing C1 and C13 until after the potentiometers are in place. This will provide better clearance for your soldering iron tip, making the soldering process easier.



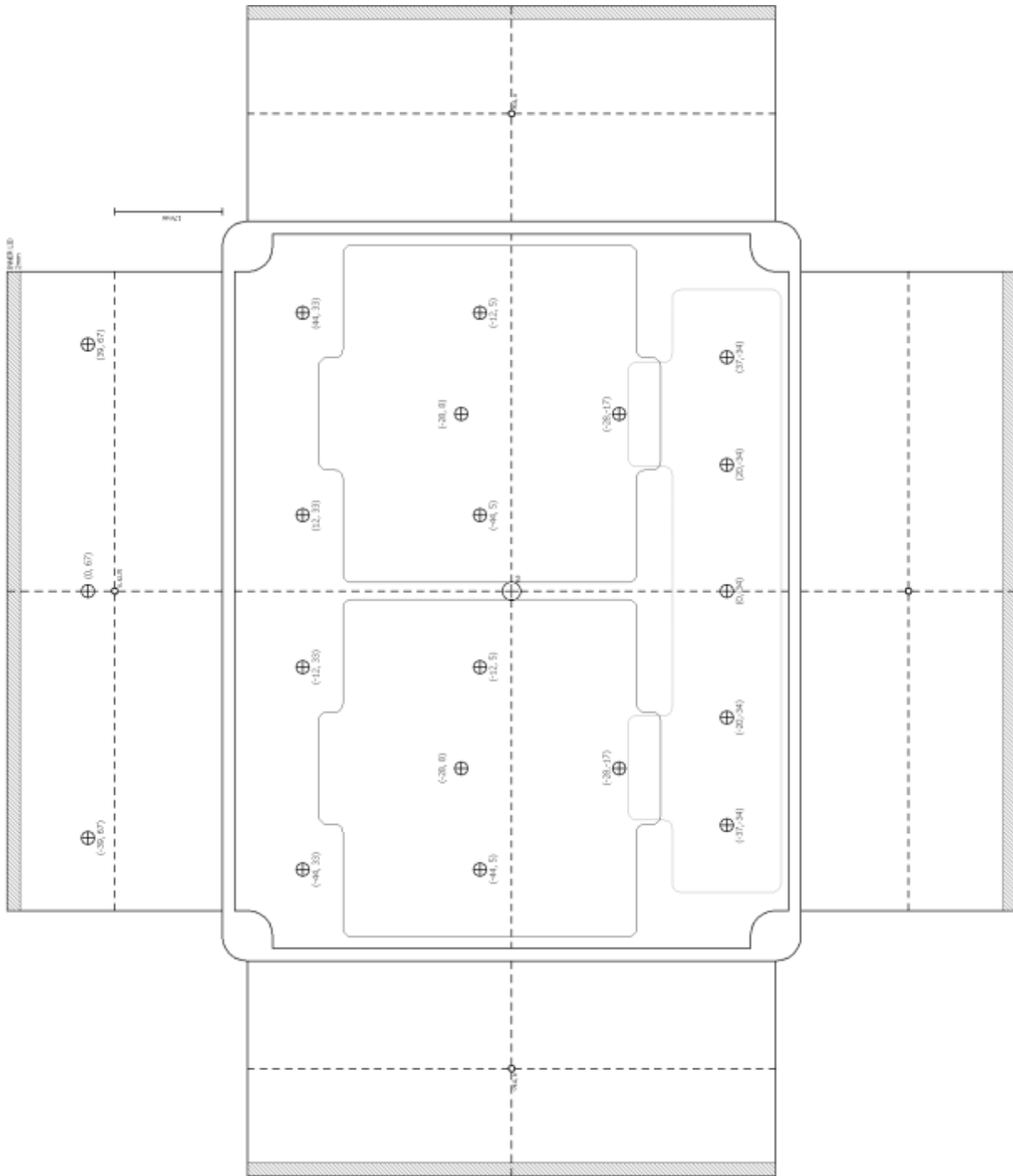
Order Switch Height Adjustment



Easy Wiring Diagram



*This Build Document, PCB, Artwork and Schematic image are property of ©GuitarPCB.com
 All copyrights, trademarks and artworks remain the property of their owners.
 Any company or product names used are for identification and educational purposes only.
 GuitarPCB is in no way affiliated with any said companies and are not to be misrepresented.*



1590BB2 Drill Template

Note: The left section features drill holes for a five-knob and the right side is a three-knob circuit.

- **Study the template and drill only the holes you need for your project.** Only the Right side has a 4-knob layout. The Left side is a 5-knob. This build requires a dual 4-knob layout. Simply fold to mark the 4-knob.

You can find a link to a Tayda Drilled enclosure on the GuitarPCB shop page. You must install both status LEDs on the dual wiring board only if you order the Tayda drilled enclosure.