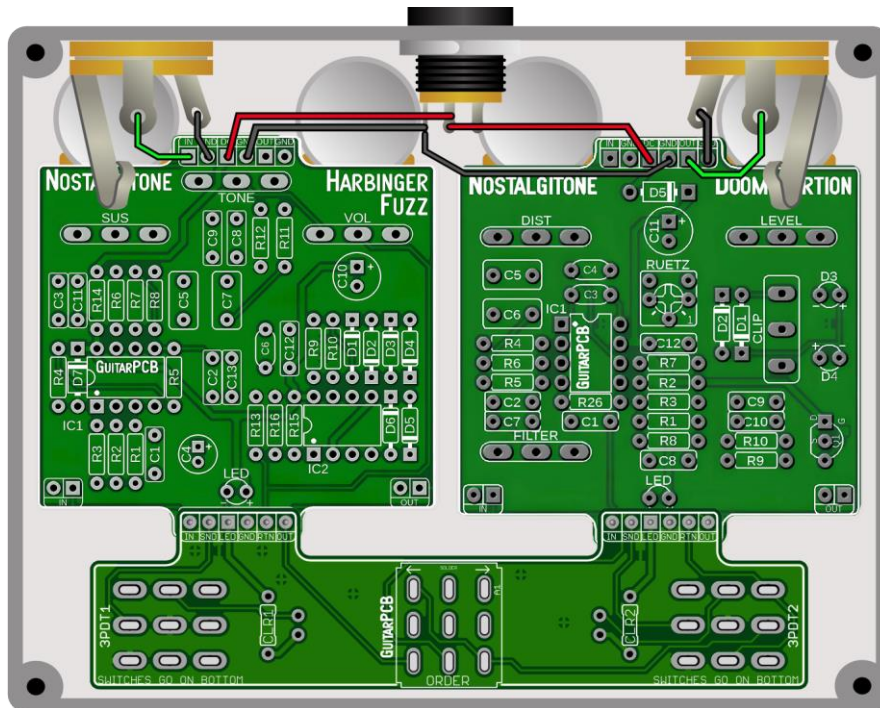

GuitarPCB Presents

Call of Cthulhu - Dual Combo

Introducing the NostalgiTone – Call of Cthulhu Dual Combo, a crushing Doom and Stoner–focused design built for players who want seismic low-end, saturated sustain, and apocalyptic riff power. This dual combo pairs two proven single circuits from the NostalgiTone lineup: the Doomstortion (inspired by the Rat) and the Harbinger Fuzz (inspired by the Big Muff Opamp), creating a massive tonal arsenal capable of everything from gritty doom dirt to thick, endlessly sustaining fuzz walls. A standout feature is the integrated order-switching, allowing you to place the circuits in either direction for dramatically different textures — from tight distortion feeding a wooly fuzz to huge fuzz tones pushing aggressive clipping in an instant.

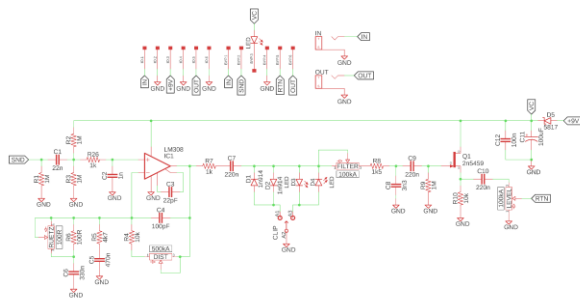


Order switching is built-in, with pin header connections making wiring a breeze.

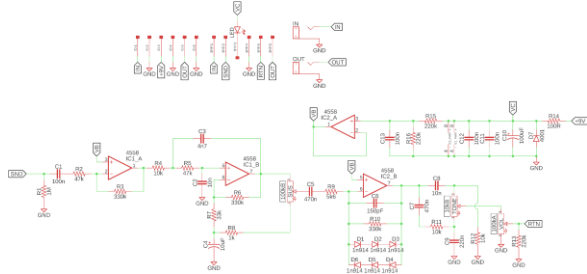
Ideal for a 1590BB2 enclosure, featuring the same dimensions as a 1590BB but with 125B clearance for jacks.

Included with each Dual Combo purchase. – (2) Mainboards, (2) pin headers, (1) Dual wiring board.

Schematic Doomstortion:



Schematic Harbinger Fuzz:



Bill of Materials Doomstortion:

Part	Value	Part	Value	Part	Value	Part	Value	Part	Value
R1	1M	R9	1M	C5	470n	D1	1N914	LEVEL	A100K
R2	1M	R10	10k	C6	330n	D2	1N914	DIST	A500K
R3	1M	R26	1k	C7	220n	D3	LED	FILTER	A100K
R4	10k			C8	3n3	D4	LED	CLIP	On/Off/On
R5	4k7	C1	22n	C9	220n	D5	1N5817		
R6	100R	C2	1n	C10	220n			IC1	OP07
R7	1k	C3	22pF	C11	100uF	RUETZ	Trim 100R	LED	Status
R8	1k5	C4	100pF	C12	100n	Q1	2N5458 / 57	*CLR x1	1k8 - 4k7

Bill of Materials Harbinger Fuzz:

Part	Value	Part	Value	Part	Value	Part	Value
R1	1M	R11	10k	C4	10uF	SUS	B100K
R2	47k	R12	10k	C5	470n	TONE	B10k
R3	330k	R13	220k	C6	150pF	VOL	A100K
R4	10k	R14	100R	C7	470n		
R5	47k	R15	220k	C8	10n	D1 - D6	1N914
R6	330k	R16	220k	C9	220n	D7	1N4001
R7	33k			C10	100uF	IC1 - IC2	RC4558
R8	1k	C1	100n	C11	100n		
R9	5k6	C2	10n	C12	100n	LED	Status
R10	330k	C3	4n7	C13	100n	*CLR	1k8 - 4k7

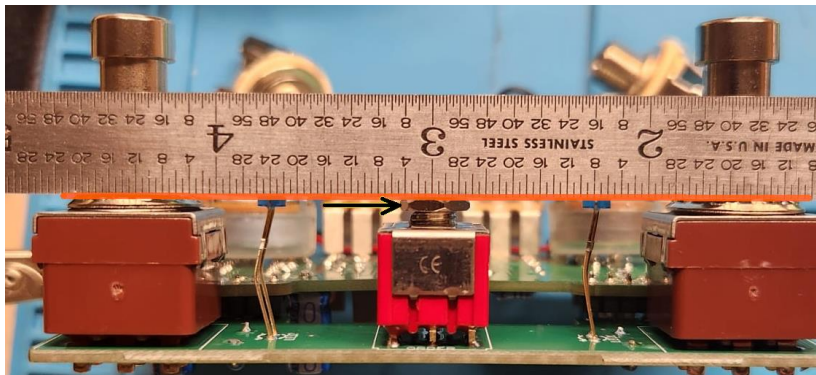
* You'll need a 3PDT toggle switch On/On (solder lug version) with a short shaft for order switching on the dual wiring board PCB.

Build Notes:

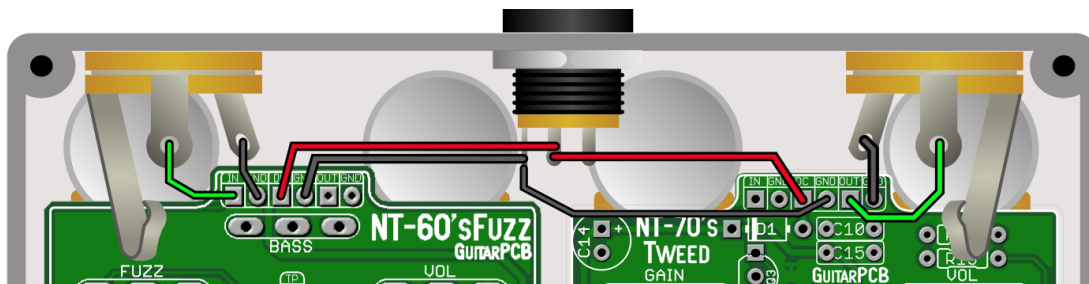
1. Solder the short side of both pin headers to the top of each main board, pointing upward. Next, solder all three switches, and (CLRs), to the Dual PCB. Crimp hang the LEDs (optional) if mounting to the dual wiring board.
2. Since the Dual PCB offers an additional LED Status location, you can choose your preferred setup. Whichever option you pick, solder a small jumper on the unused LED pads. (CLRs) are essential regardless of the installation choice.
3. Remove both nuts on each of the 3PDT foot switches for the best height match. Adjust the height of the Order Switch height adjustment nut so it is level with the foot switches (see photo next page). Do not over-tighten.
4. Install the Dual PCB by sliding it over both pin headers. Once the foot switches and toggle switch are secured correctly within the enclosure, proceed to solder the long side of the pin header to the dual wiring board.
5. There are two (CLR) Current Limiting Resistors crucial to protect and adjust the brightness of their corresponding status LED. You may use a value of 1k8 (Bright) to 4k7 (Dim).

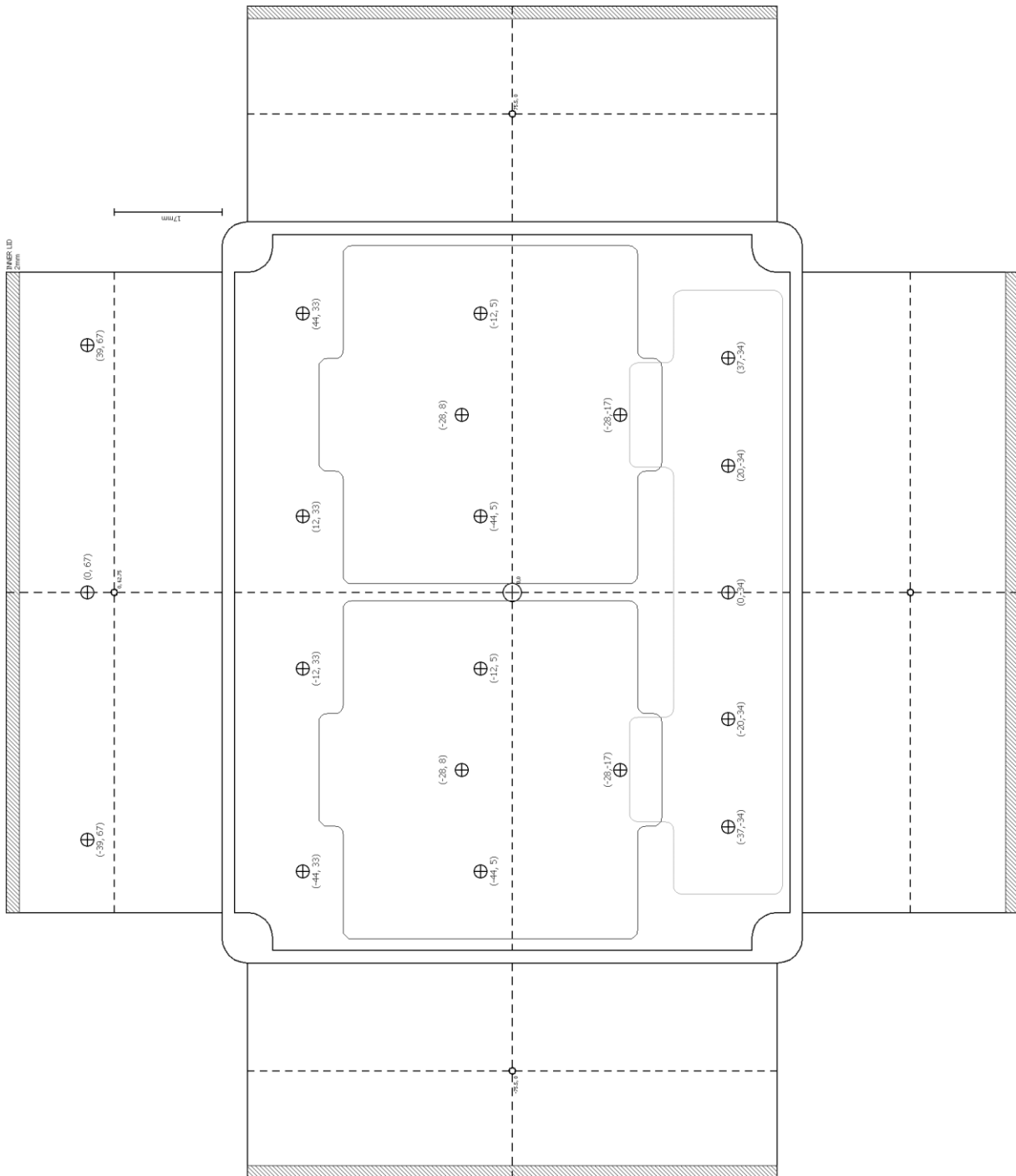
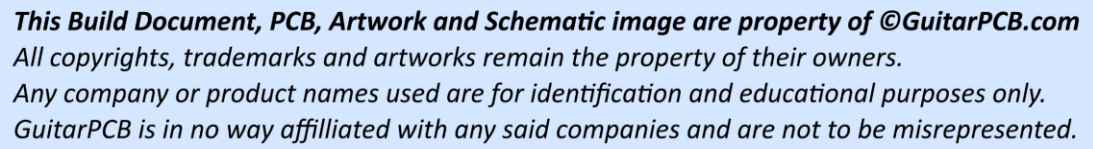


Easy Pre-installation Height Adjustment



Easy Wiring Diagram





1590BB2 Drill Template

Note: Each section features drill hole patterns suitable for either a three-knob or four-knob circuit.

Study the template and drill only the holes you need for your project.

You can find a link to a Tayda Drilled enclosure on the GuitarPCB shop page. You must install the two status LEDs on the dual wiring board if you order the drilled enclosure.