
GuitarPCB Presents

NostalgiTone Chorus Single

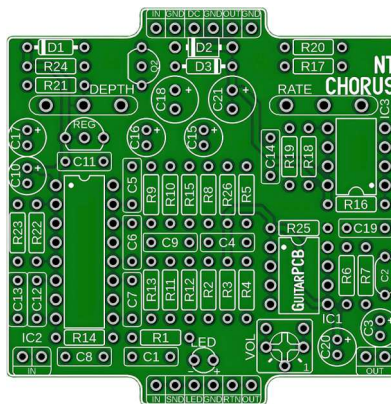
Are you ready to elevate your game? The **NostalgiTone Chorus** is here to give you the ultimate sonic experience.

NostalgiTone Chorus: The Chorus effect provides rich modulation, ranging from subtle tone enhancement to deep, warbling effects. Its intuitive controls for Rate and Depth make it easy to achieve your desired tone, and includes a “set and forget” overall Volume trimmer. Add lush tones, creating even more expansive soundscapes.

🔧 **Easy Wiring:** No more daunting wiring hassles! Say hello to beauty under the hood. Enjoy all-analog tones with modern features that will slip into your gig bag, ensuring you are always ready to unleash your musical magic.

🔧 **Available Components:** We recognize the hurdles of component availability. Rest assured, we've carefully selected components for the **NostalgiTone** series currently available from today's popular vendors.

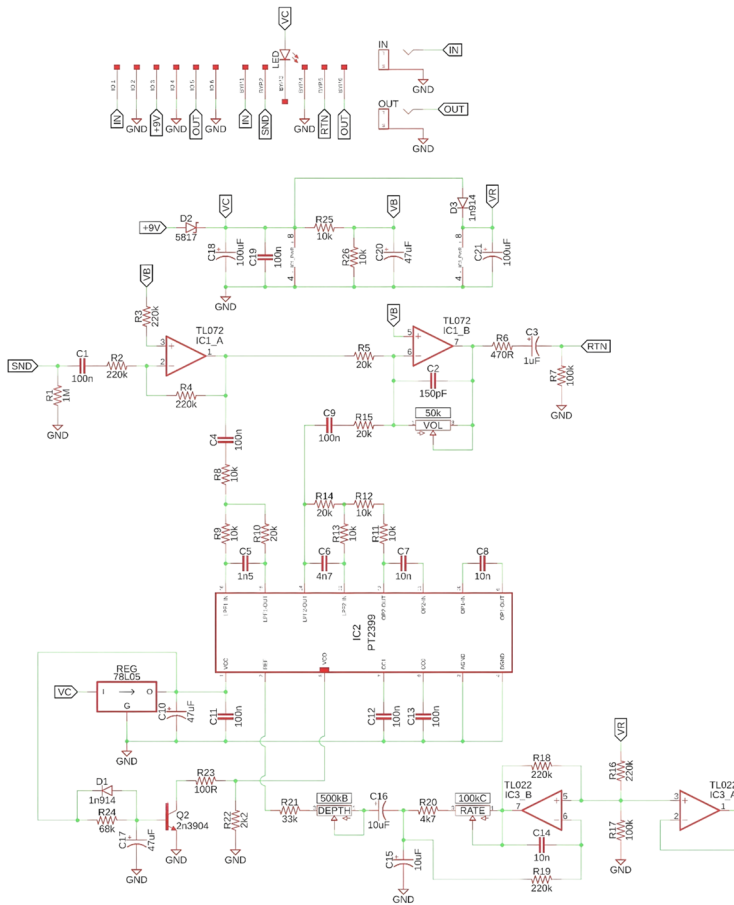
Do not settle for the ordinary when you can have extraordinary. Elevate your tone with the **NostalgiTone** series singles from GuitarPCB. Get yours today and discover a world of sonic possibilities like never before!



Mainboard Dimensions – 2.10" x 2.12" – Perfectly sized for a 1590B or 125B enclosure

Included with each PCB purchase. – (1) Mainboard, (1) wiring board, and (1) ribbon cable.

Schematic:



Bill of Materials:

Part	Value	Part	Value	Part	Value	Part	Value	Part	Value
R1	1M	R14	20k	C1	100n	C14	10n	RATE	C100K
R2	220k	R15	20k	C2	150pF	C15	10uF	DEPTH	B500K
R3	220k	R16	220k	C3	1uF	C16	10uF	VOL	Trim - 50k
R4	220k	R17	100k	C4	100n	C17	47uF		
R5	20k	R18	220k	C5	1n5	C18	100uF	D1	1N914
R6	470R	R19	220k	C6	4n7	C19	100n	D2	1N5817
R7	100k	R20	4k7	C7	10n	C20	47uF	D3	1N914
R8	10k	R21	33k	C8	10n	C21	100uF		
R9	10k	R22	2k2	C9	100n			Q2	2n3904
R10	20k	R23	100R	C10	47uF	IC1	TL072		
R11	10k	R24	68k	C11	100n	IC2	PT2399	LED	Status
R12	10k	R25	10k	C12	100n	IC3	TL072		
R13	10k	R26	10k	C13	100n	REG	L78L05	CLR x1	1k8 - 4k7

Build Notes:

Included with the purchase of the main PCB board will be (1) standard foot switch wiring board (6 pins), and (1) 6 pin ribbon cable.

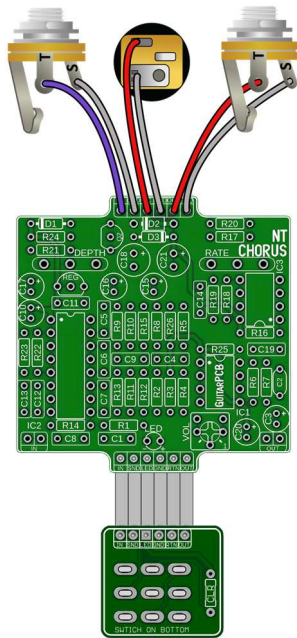
Note: There is no Q1. – VOL is a set and forget overall volume trimmer (start with center). – IC's can also use RC4558 or similar.

There are extra IN / Out pads located at the bottom of the PCB which are conveniently placed if you wish to use side jacks.

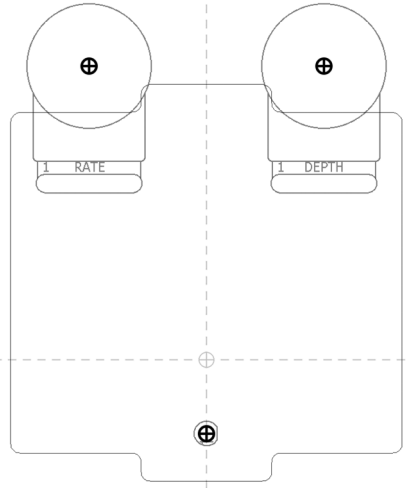
Use a standard 6-pin ribbon cable to connect the foot switch wiring board with the main board. The 3PDT wiring board contains an onboard (CLR) current limiting resistor. This is to adjust the brightness of the corresponding main board status LEDs. A value of 1k8 to 4k7 may be used.

* CLR x1 - Each wiring board requires an onboard (CLR) current limiting resistor. This is for the main board status LED.

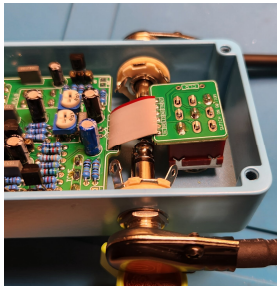
Wiring Diagram



Generic Drill Template



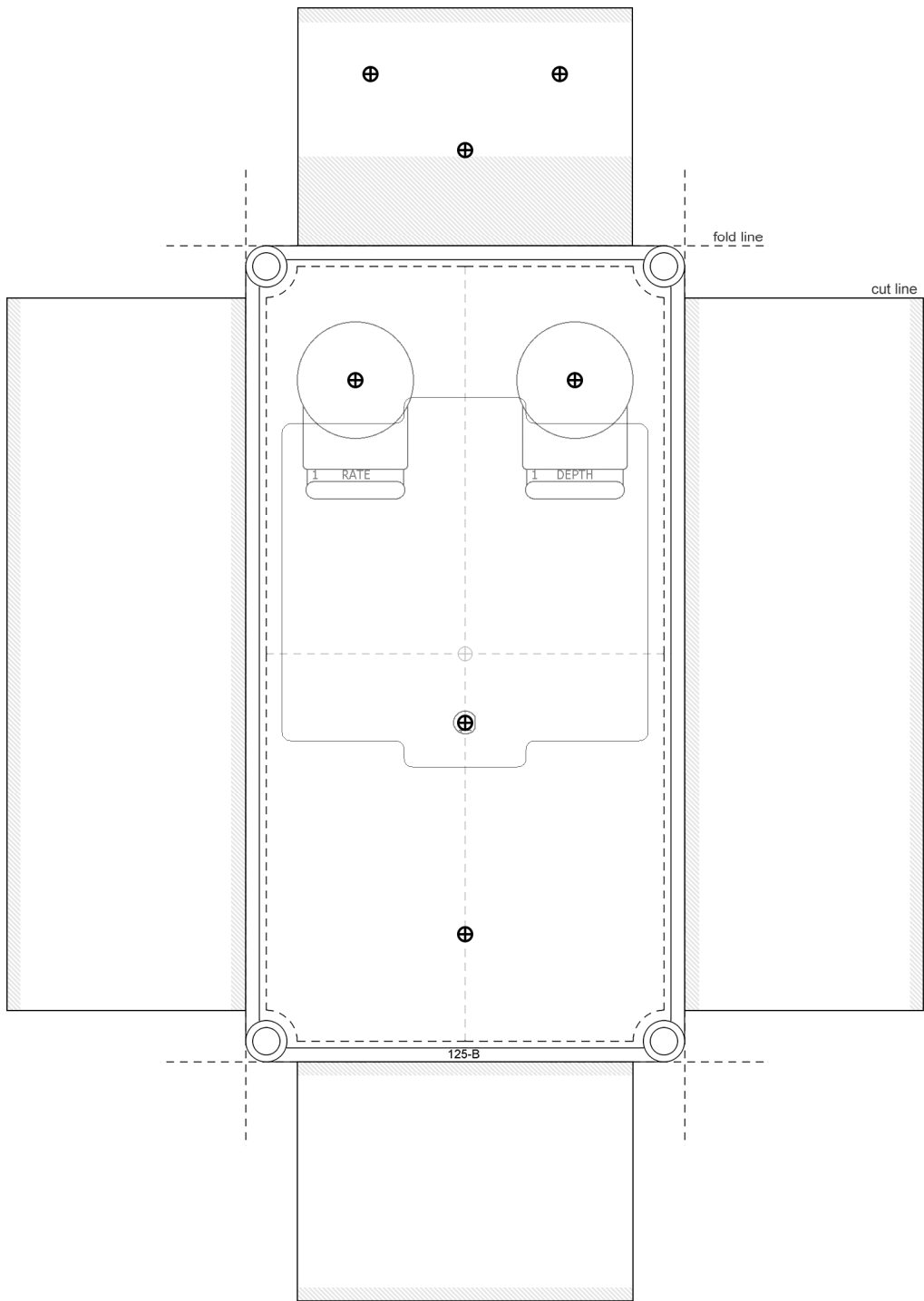
When using 1590B enclosures, it is best to mount the ribbon cable on top of the main board/3PDT wiring board instead of underneath. This is because the enclosure's compact size restricts space for the side jack Input and Output plugs.



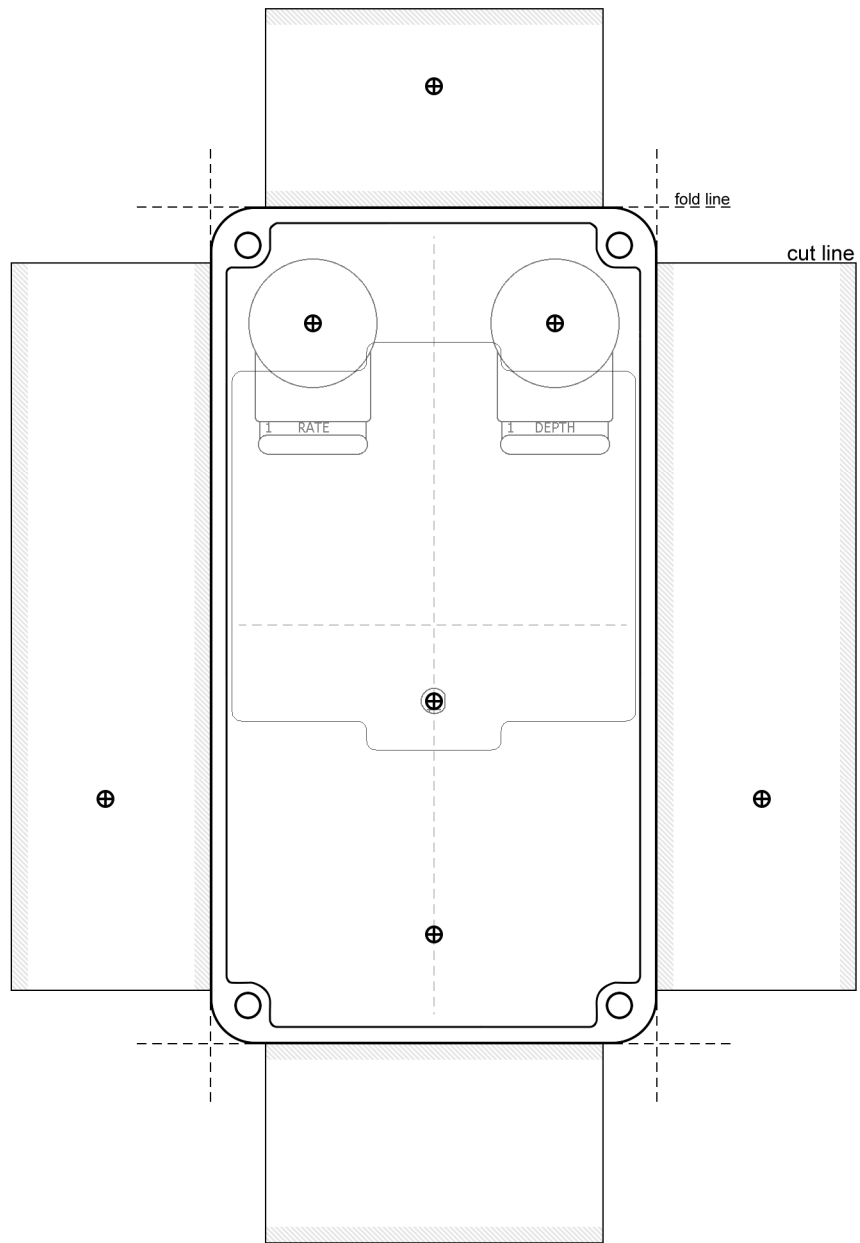
The full-size drill templates for 125B and 1590B enclosures can be found on the following two pages. Additionally, you can find a link to Tayda's pre-drilled enclosures on the shop page at GuitarPCB.com.



This Build Document, PCB, Artwork and Schematic image are property of ©GuitarPCB.com
All copyrights, trademarks and artworks remain the property of their owners.
Any company or product names used are for identification and educational purposes only.
GuitarPCB is in no way affiliated with any said companies and are not to be misrepresented.



125B Drill Template



1590B Drill Template