
GuitarPCB Presents

NostalgiTone Ascension Boost Single

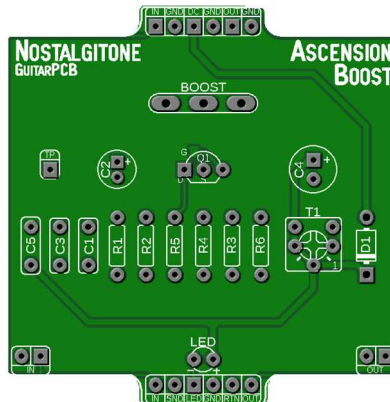
Are you ready to elevate your game? The **NostalgiTone Ascension Boost** is here to give you the ultimate sonic experience.

Ascension Boost: The Ascension Boost Circuit is powerful and adds extra layers of tone by amplifying volume by up to 26dB while enhancing all other circuits when used in tandem. It pushes everything to greater depths, creating richer, more complex tones that would not be achievable otherwise. This interaction allows for a more intense and dynamic sound, providing the ability to shape and refine the tone and sustain essential for all music. The Ascension Boost is often utilized at the end of an effects chain as an “always on” device enhancing the tone of everything.

🔧 **Easy Wiring:** No more daunting wiring hassles! Say hello to beauty under the hood. Enjoy all-analog tones with modern features that will slip into your gig bag, ensuring you are always ready to unleash your musical magic.

🔧 **Available Components:** We recognize the hurdles of component availability. Rest assured, we've carefully selected components for the **NostalgiTone** series currently available from today's popular vendors.

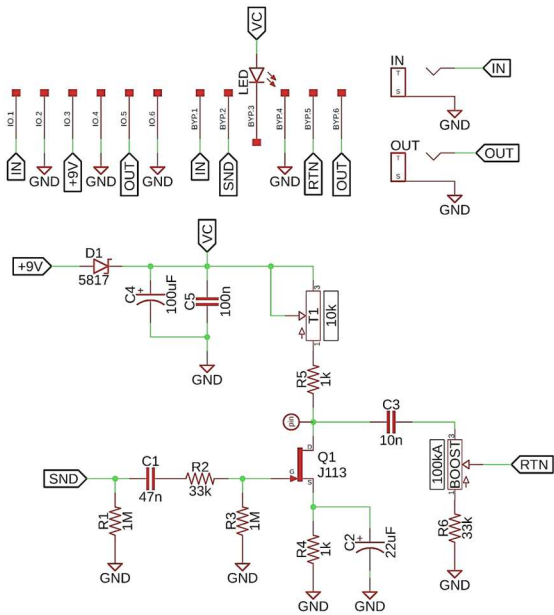
Do not settle for the ordinary when you can have extraordinary. Elevate your tone with the **NostalgiTone** series singles from GuitarPCB. Get yours today and discover a world of sonic possibilities like never before!



Mainboard Dimensions – 2.10” x 2.12” – Perfectly sized for a 1590B or 125B enclosure

Included with each PCB purchase. – (1) Mainboard, (1) wiring board, and (1) ribbon cable.

Schematic:



Bill of Materials:

Part	Value	Part	Value	Part	Value
R1	1M	C1	47n	Q1	J113 / J201
R2	33k	C2	22uF	D1	1N5817
R3	1M	C3	10n	T1	10k
R4	1k	C4	100uF	BOOST	A100K
R5	1k	C5	100n	LED	Status
R6	33k			* CLR x1	1k8 - 4k7

Build Notes:

Included with the purchase of the main PCB board will be (1) standard foot switch wiring board (6 pins), and (1) 6 pin ribbon cable. This simplifies the wiring process while keeping troubleshooting and noise to a minimum.

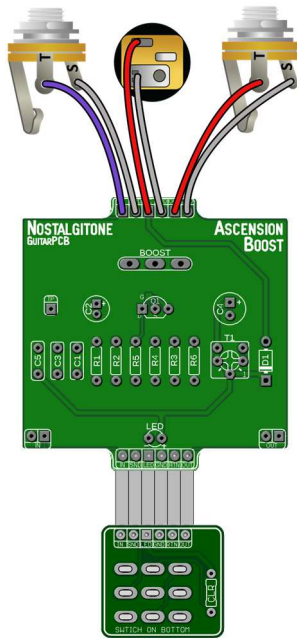
Note the extra IN / Out pads located at the bottom of the PCB which are conveniently placed if you wish to use side jacks.

Use a standard 6-pin ribbon cable to connect the foot switch wiring board with the main board. The 3PDT wiring board contains an onboard (CLR) current limiting resistor. This is to protect and adjust the brightness of their corresponding main board status LEDs. A value of 1k8 to 4k7 may be used.

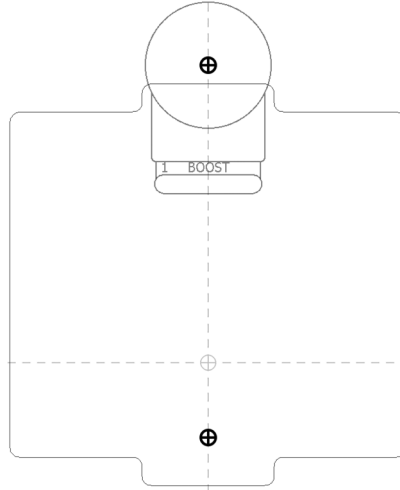
Q1 – Use a J113 JFET or try a J201-SMD version JFET.

* **CLR x1** - Each wiring board requires an onboard (CLR) current limiting resistor. This is for the main board status LEDs. A 1k8 (Bright) value to 4k7 (Dim) may be used. A main Status LED is to show the active status.

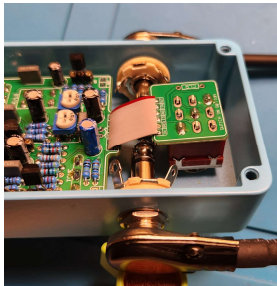
Wiring Diagram



Generic Drill Template



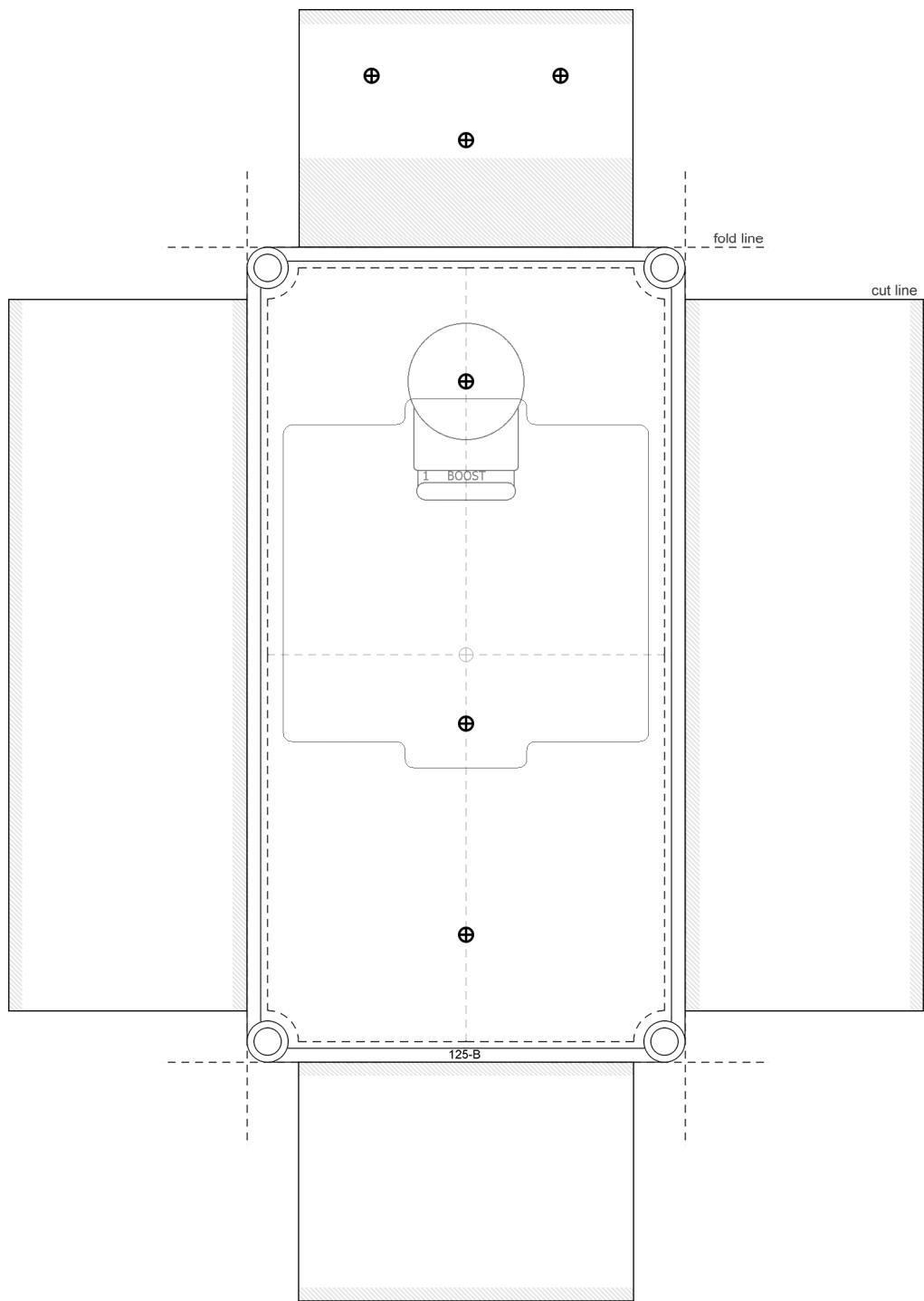
When using 1590B enclosures, it is best to mount the ribbon cable on top of the main board/3PDT wiring board instead of underneath. This is because the enclosure's compact size restricts space for the side jack Input and Output plugs.



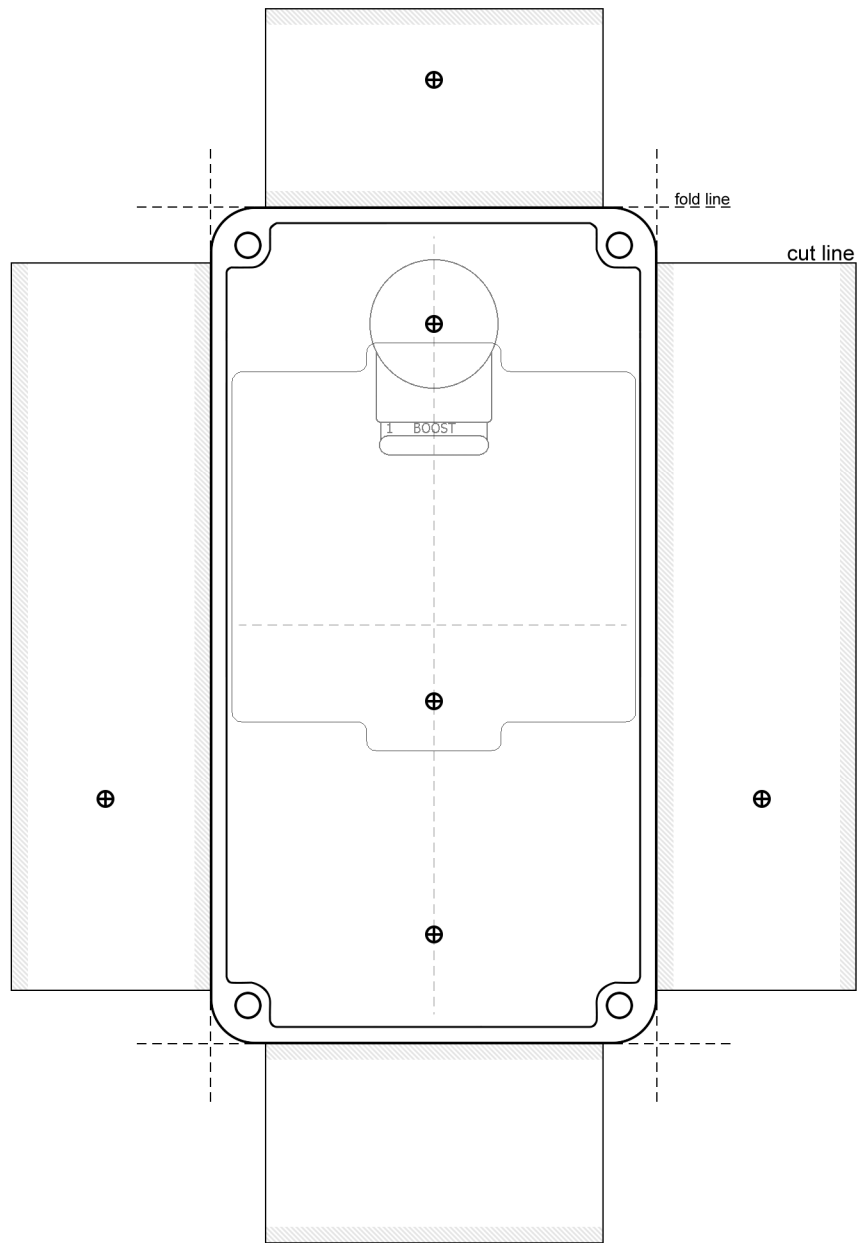
The full-size drill templates for 125B and 1590B enclosures can be found on the following two pages. Additionally, you can find a link to Tayda's pre-drilled enclosures on the shop page at GuitarPCB.com.



This Build Document, PCB, Artwork and Schematic image are property of ©GuitarPCB.com
All copyrights, trademarks and artworks remain the property of their owners.
Any company or product names used are for identification and educational purposes only.
GuitarPCB is in no way affiliated with any said companies and are not to be misrepresented.



125B Drill Template



1590B Drill Template