
GuitarPCB Presents

NostalgiTone Dumbletone Single

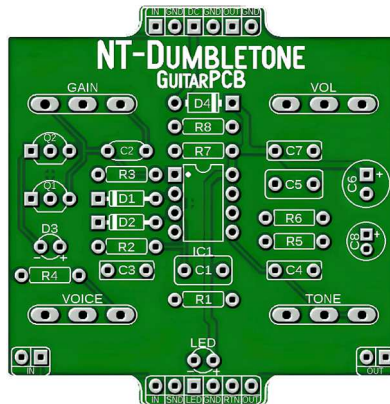
Are you ready to elevate your game? The **NostalgiTone Dumbletone** is here to give you the ultimate sonic experience.

Dumbletone: To achieve authentic Dumble style tones, you need a preamp that is clear, transparent, and punchy, and nothing does this better than the Dumbletone Single. With four knobs to control Volume, Gain, Tone, and Voicing, it offers light overdrive at lower settings reminiscent of tube amps at the "sweet spot." Higher settings boost gain and sustain for rich overdrive.

🔧 **Easy Wiring:** No more daunting wiring hassles! Say hello to beauty under the hood. Enjoy all-analog tones with modern features that will slip into your gig bag, ensuring you are always ready to unleash your musical magic.

🔧 **Available Components:** We recognize the hurdles of component availability. Rest assured, we've carefully selected components for the **NostalgiTone** series currently available from today's popular vendors.

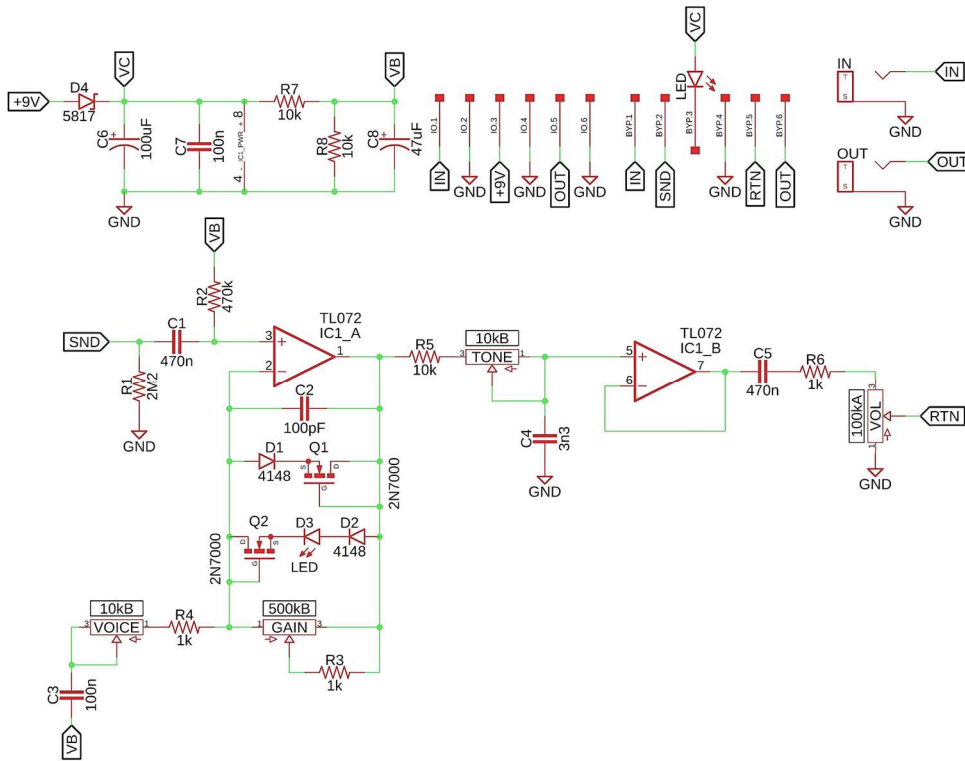
Do not settle for the ordinary when you can have extraordinary. Elevate your tone with the **NostalgiTone** series singles from GuitarPCB. Get yours today and discover a world of sonic possibilities like never before!



Mainboard Dimensions – 2.10" x 2.12" – Perfectly sized for a 1590B or 125B enclosure

Included with each PCB purchase. – (1) Mainboard, (1) wiring board, and (1) ribbon cable.

Schematic:



Bill of Materials:

R1	2M2	C1	470n	Q1	2N7000	D1	1N4148
R2	470k	C2	100pF	Q2	2N7000	D2	1N4148
R3	1k	C3	100n			D3	Red LED
R4	1k	C4	3n3	VOL	100kA	D4	1N5817
R5	10k	C5	470n	GAIN	500kB		
R6	1k	C6	100uF	VOICE	10kB	IC1	TL072
R7	10k	C7	100n	TONE	10kB	LED	Status
R8	10k	C8	47uF			*CLR x1	1k8 - 4k7

Build Notes:

Included with the purchase of the main PCB board will be (1) standard foot switch wiring board (6 pins), and (1) 6 pin ribbon cable. This simplifies the wiring process while keeping troubleshooting and noise to a minimum.

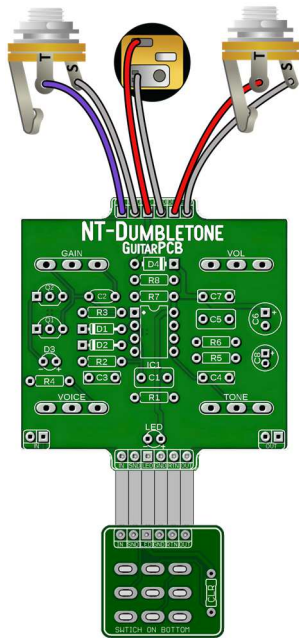
Note the extra IN / Out pads located at the bottom of the PCB which are conveniently placed if you wish to use side jacks.

Use a standard 6-pin ribbon cable to connect the foot switch wiring board with the main board. The 3PDT wiring board contains an onboard (CLR) current limiting resistor. This is to protect and adjust the brightness of their corresponding main board status LEDs. A value of 1k8 to 4k7 may be used.

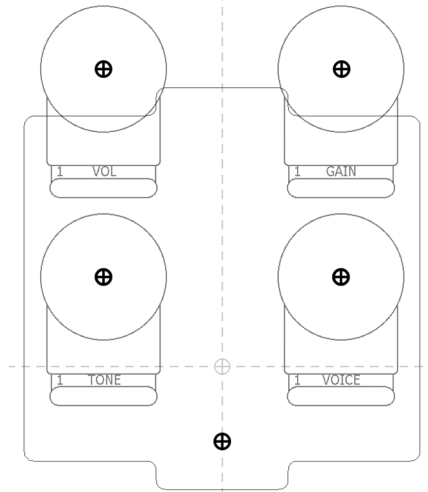
IC1 – Use a TL072 however feel free to experiment with OPA2134PA, NE5532, RC4558, or LM833.

* **CLR x1** - Each wiring board requires an onboard (CLR) current limiting resistor. This is for the main board status LEDs. A 1k8 (Bright) value to 4k7 (Dim) may be used. A main Status LED is to show the active status.

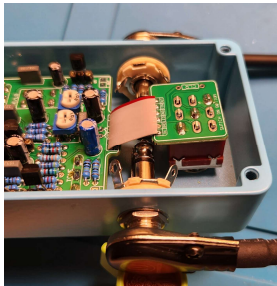
Wiring Diagram



Generic Drill Template



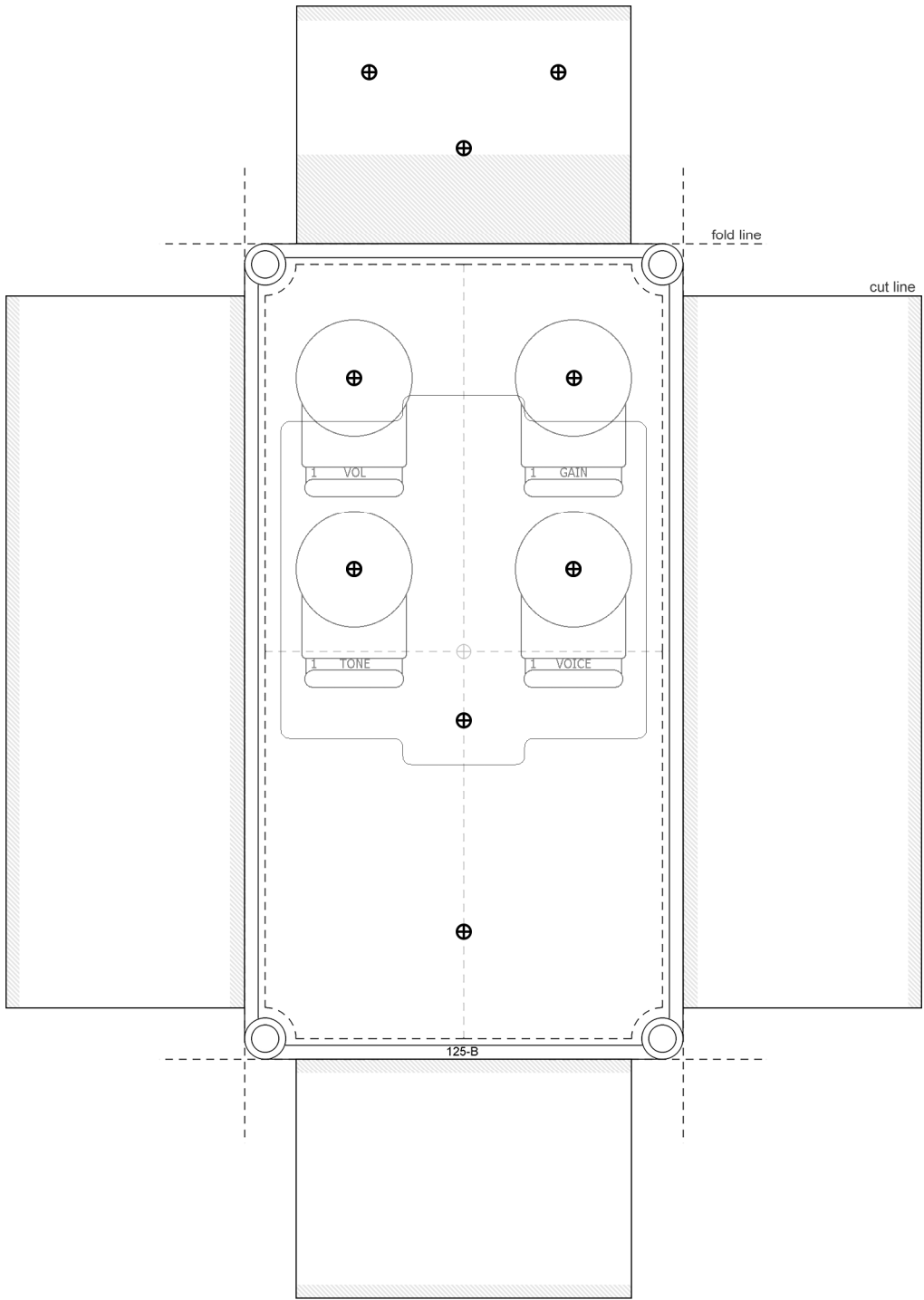
When using 1590B enclosures, it is best to mount the ribbon cable on top of the main board/3PDT wiring board instead of underneath. This is because the enclosure's compact size restricts space for the side jack Input and Output plugs.



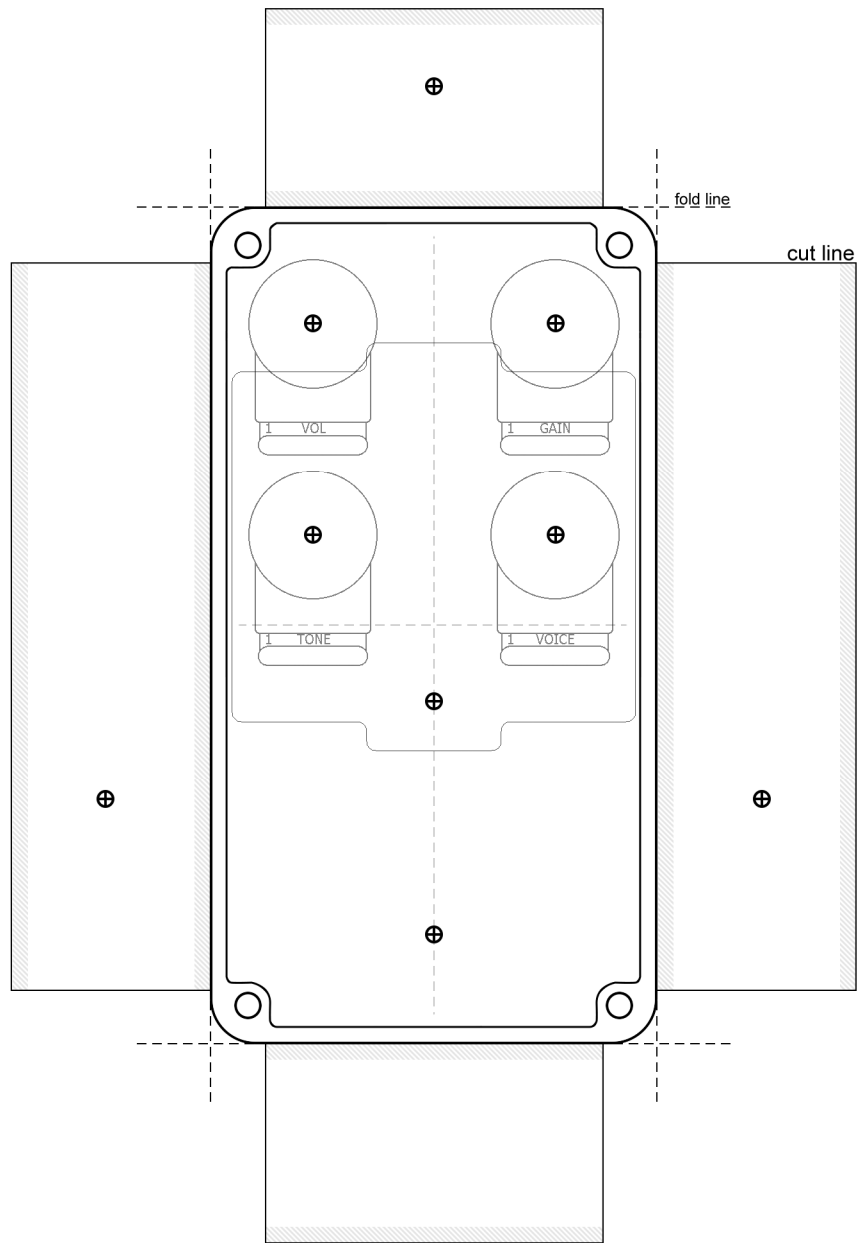
The full-size drill templates for 125B and 1590B enclosures can be found on the following two pages. Additionally, you can find a link to Tayda's pre-drilled enclosures on the shop page at GuitarPCB.com.



This Build Document, PCB, Artwork and Schematic image are property of ©GuitarPCB.com
All copyrights, trademarks and artworks remain the property of their owners.
Any company or product names used are for identification and educational purposes only.
GuitarPCB is in no way affiliated with any said companies and are not to be misrepresented.



125B Drill Template



1590B Drill Template