
GuitarPCB presents

Doom Prophet

NostalgiTone Doom Prophet is the second pedal in the "Genre Series," designed to deliver the heaviest Doom, Stoner, and Desert Rock tones. Whether you are channeling the sounds of Black Sabbath, Kyuss, Fu Manchu, or Sleep, this pedal is perfect for crafting powerful, drop-tuned riffs. It also nails authentic '90s tones, evoking the vibes of Billy Corgan, Soundgarden, Melvins, Nirvana, and Mudhoney.

Fine-tuned for 6-string, 7-string, and even Bass guitar, the **Doom Prophet** combines iconic Boost, Fuzz, and Distortion circuits, allowing you to shape your tone with precision and intensity. These circuits are designed to work together, unlocking endless sonic possibilities, and allowing you to explore a vast range of heavy, rich tones. Unleash your inner doom and dive even deeper with the **Doom Prophet**.

Boost: The Boost Circuit is powerful and adds extra layers of Doom tone by amplifying volume by up to 26dB while enhancing the Fuzz and Distortion circuits when used in tandem. It pushes everything to greater depths, creating richer, more complex tones that would not be achievable otherwise. This interaction allows for a more intense and dynamic sound, providing the ability to shape and refine the heaviness and sustain essential for Doom metal.

Fuzz: Inspired by the iconic Muff, the Fuzz circuit is perfect for Doom metal, delivering powerful, crushing fuzz that creates massive, sludgy tones. This circuit provides an aggressive fuzz that works in tandem with the Distortion circuit's raunchy, gritty sound. While the Distortion circuit adds bite and grit, ideal for rhythm and lead playing, the Fuzz Circuit offers heavier distortion for massive riffs and excellent sustain. Together, they allow you to craft a wide range of doom-laden tones, enhancing depth and texture in your music.

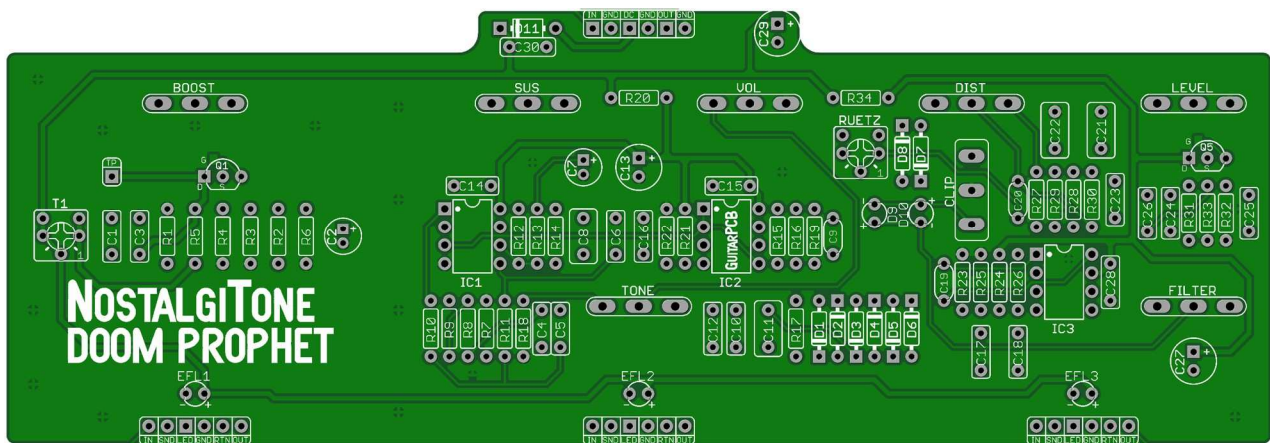
Distortion: Based on the iconic Rat, the Distortion circuit is an excellent choice for Doom guitar, offering a raunchy, gritty tone perfect for thick, heavy riffs. With a "filter" knob for precise tone shaping, it is versatile enough for both rhythm and lead playing. It adds extra bite, letting you dial in a wide range of Metal tones or roll it back for the sludgy sounds characteristic of Doom metal.

Easy Wiring: No more daunting wiring hassles! Say hello to beauty under the hood. Enjoy all-analog tones with modern features that will slip into your gig bag, ensuring you are always ready to unleash your musical magic.

Available Components: We recognize the hurdles of component availability. Rest assured; we've carefully selected components for the **NostalgiTone** series that are currently available from today's popular vendors.

Do not settle for the ordinary when you can have extraordinary. Elevate your tone with the **NostalgiTone** series combo builds from GuitarPCB. Get yours today and discover a world of sonic possibilities like never before!

Part	Value	Part	Value	Part	Value	Part	Value	Part	Value	Part	Value
R1	1M	R16	330k	R31	1k3	C11	470n	C26	220n	BOOST	A100K
R2	33k	R17	10k	R32	1M	C12	220n	C27	100uF		
R3	1M	R18	10k	R33	10k	C13	100uF	C28	100n	VOL	A100K
R4	1k	R19	220k	R34	47R	C14	100n	C29	220uF	TONE	B10K
R5	1k	R20	100R			C15	100n	C30	100n	SUS	B100K
R6	33k	R21	220k	C1	47n	C16	100n				
R7	1M	R22	220k	C2	22uF	C17	220n	D1 - D8	1N4148	LEVEL	A100K
R8	47k	R23	1M	C3	220n	C18	10n	D9 - D10	LED	FILTER	A100K
R9	330k	R24	1M	C4	100n	C19	22pF	D11	1N5817	DIST	A500K
R10	10k	R25	1M	C5	4n7	C20	100pF	Q1	J113		
R11	47k	R26	1k	C6	10n	C21	470n	Q5	2N5458	RUETZ	Trim 100R
R12	330k	R27	10k	C7	10uF	C22	330n			T1	Trim 10k
R13	33k	R28	4k7	C8	470n	C23	220n	IC1	4558	TP	Test Pad
R14	1k	R29	100R	C9	150pF	C24	3n3	IC2	4558	CLIP-SPDT	On/Off/On
R15	5k1	R30	1k	C10	10n	C25	220n	IC3	OP07	EFL1 - 3	Status LED



Build Notes:

Included with the purchase of the main PCB board will be (3) standard foot switch wiring boards (6 pins), as well as (3) pieces of ribbon connector. This simplifies the wiring process while keeping troubleshooting to a minimum.

* **CLR x3** - Each wiring board needs an onboard current limiting resistor (CLR) for the main board status LEDs. You can use a resistor value between 1k8 (bright) and 4k7 (dim). Solder the 3PDT foot switches to the underside of the wiring boards, opposite the CLR side.

Solder the wiring boards (correct side) to your preferred 3PDT footswitch, attach one end of the ribbon cable to the wiring board, and then proceed to solder the three assembled footswitches to the main board. Utilize the top center pads for connecting power and the In/Out jacks.

TIPS:

- **T1 – TP** Use to adjust the Bias of J113 at Q1. Use a DMM and place the Black probe on any ground and the Red probe on the **TP pad** which is the Drain of J113. Turn the trimmer **T1** un-l you have a reading between 4.5v to 6.0v
- **IC2 and IC3** – 4558's was selected for their low noise proper-es, price, and availability. Try NE5532, LF353, OPA2134, as well.
- **D1 – D8** uses 1N4148 diodes while D9 and D10 use LEDs to achieve a tube amp tone. A Yellow LED works similarly. The forward voltage of a Violet or Blue LED is noticeably different if you wish to experiment.
- Avoid changing the values of resistors, capacitors, or potentiometer tapers, as they play a crucial role in the functionality and the creation of the desired feel. All the values used are readily available.

Usage Guide:

Gain Mapping: Effective gain mapping is vital for optimizing your combo pedal setup. Avoid the inclination to turn all knobs to 10, as this rapidly leads to unwanted noise and feedback. Instead, explore the intricacies of control mapping to unlock a diverse range of tones. Consider that each of the three circuits contributes a substantial level of Gain, and when used together, they combine.

- **Power Supply:** Always use a 9-volt power supply (nothing higher) with a 2.1mm plug and a negative -p.



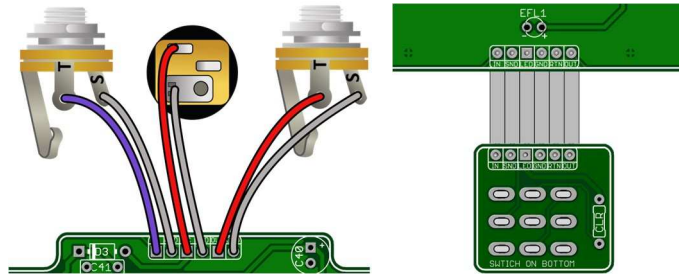
This Build Document, PCB, Artwork and Schematic image are property of ©GuitarPCB.com

All copyrights, trademarks and artworks remain the property of their owners.

Any company or product names used are for identification and educational purposes only.

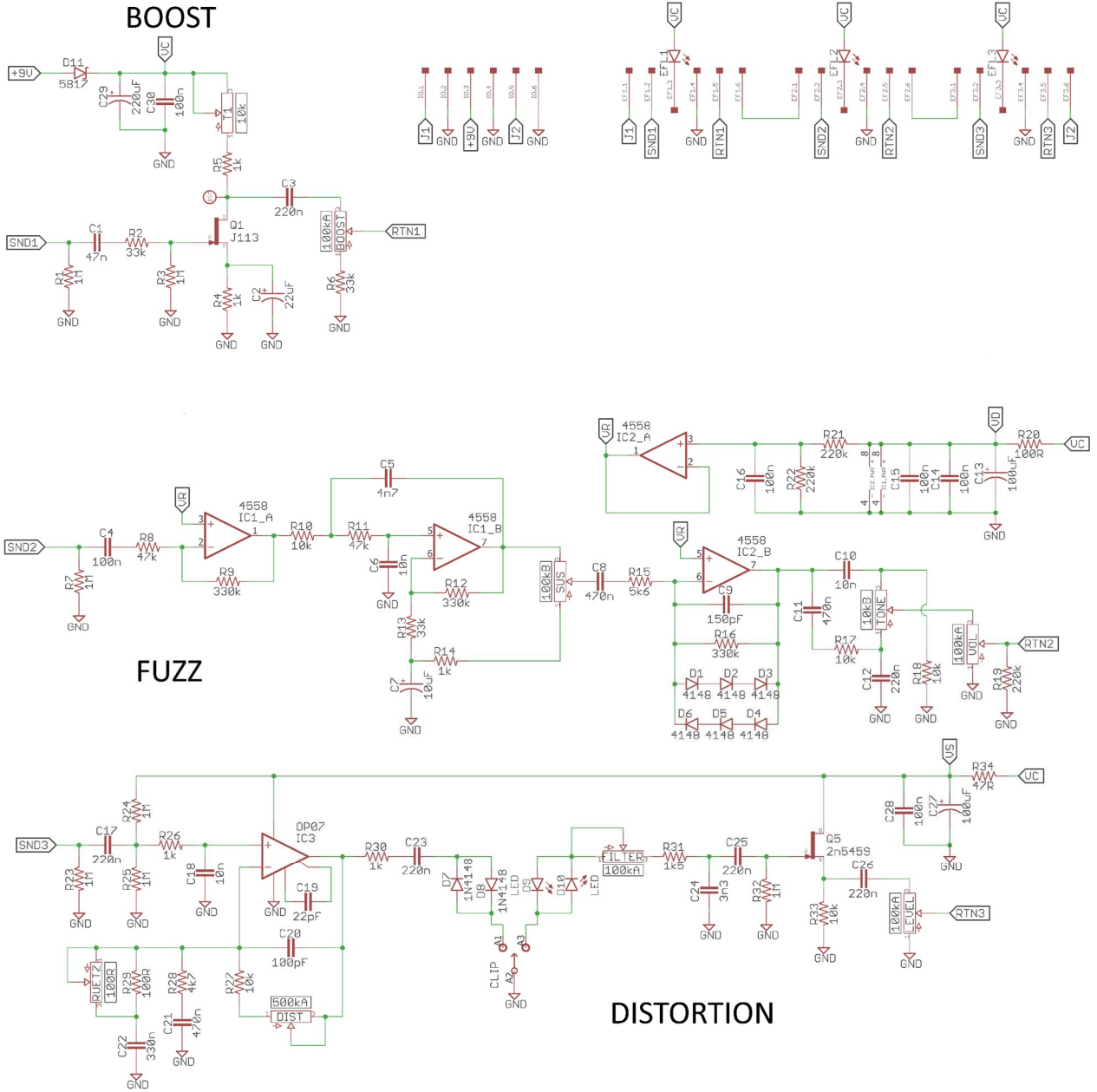
GuitarPCB is in no way affiliated with any said companies and are not to be misrepresented.

A link for a Tayda Pre-drilled enclosure is on the Shop page at GuitarPCB.com

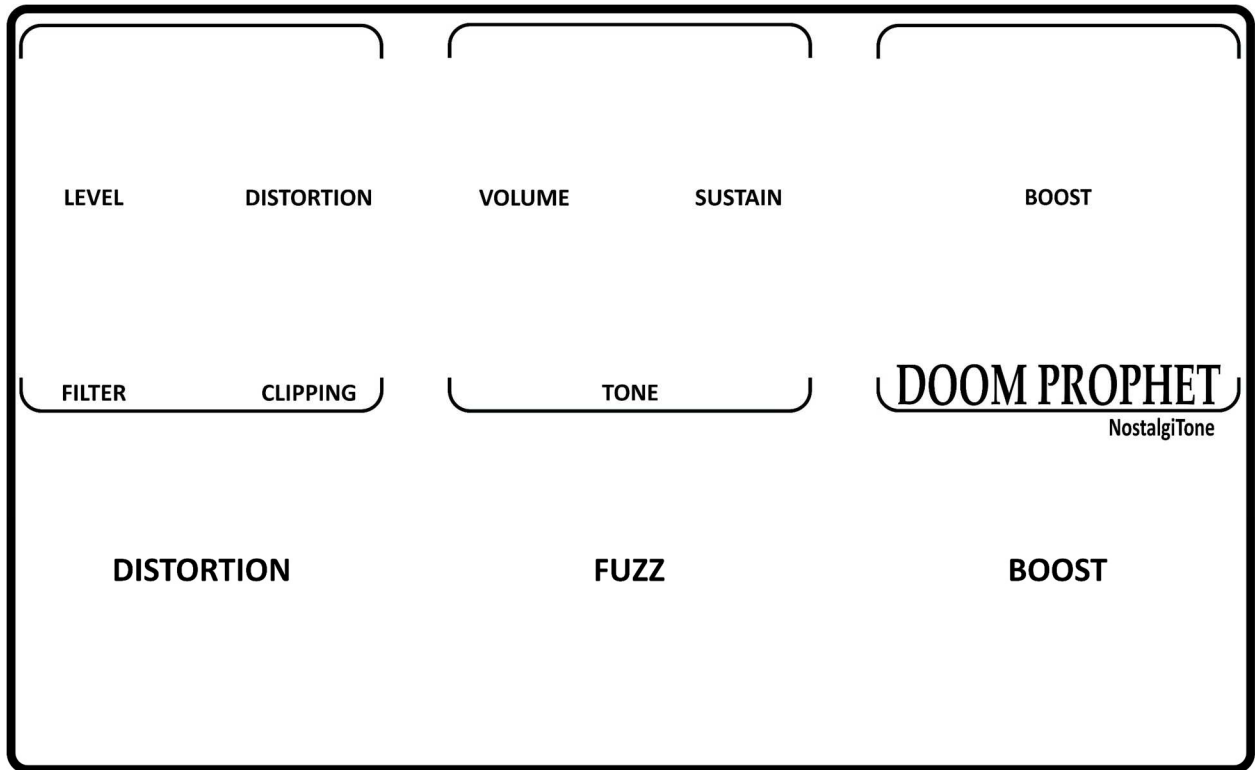


Easy Wiring Guide – Install the 3PDT switch on the bottom. CLR is the Top.

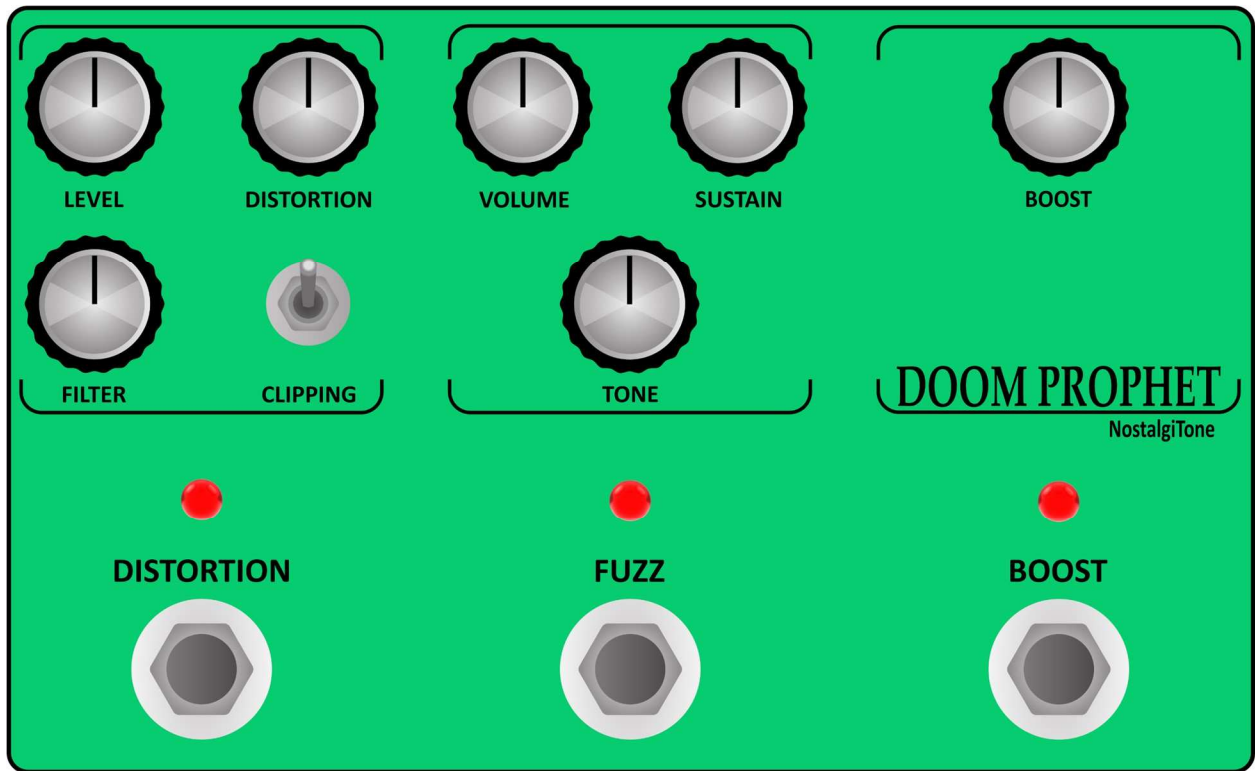
SchemaEc:



Decal Image: Obtain a High-Resolution version at the Shop Page where you purchased this PCB.



An example of a finished enclosure is below.



1280DD

