

---

# GuitarPCB Presents:

## NOSTALGITONE SINGLES — “60’s TREMOLO”

---

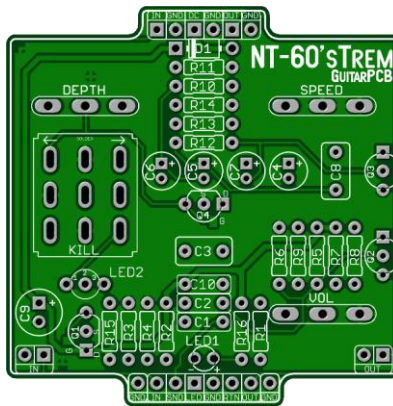
Are you ready to elevate your game? The **NOSTALGITONE TREMOLO** is here to give you the ultimate sonic experience.

The Tremolo is a vital addition to your tone, infusing your guitar tone with captivating pulsing waves. But that is not everything. Thanks to the onboard toggle “kill” switch, you can deactivate the tremolo pulse while keeping the tone-enhancing portion of the circuit intact. This gives you the purest tone to your amplifier while enhancing your entire effects chain, resulting in impeccably crisp and crystal-clear notes.

🔧 **Easy Wiring:** No more daunting wiring hassles! Say hello to beauty under the hood. Enjoy all-analog tones with modern features that will slip into your gig bag, ensuring you are always ready to unleash your musical magic.

🔧 **Available Components:** We recognize the hurdles of component availability. Rest assured, we’ve carefully selected components for the **NOSTALGITONE** series currently available from today’s popular vendors.

Do not settle for the ordinary when you can have extraordinary. Elevate your tone with the **NOSTALGITONE** series singles from GuitarPCB. Get yours today and discover a world of sonic possibilities like never before!



**Mainboard Dimensions – 2.10” x 2.12” – Perfectly sized for a 1590B or 125B enclosure**

**Included with each PCB purchase.** – (1) Mainboard, (1) wiring board, and (1) ribbon cable.

## Bill of Materials:

Resistors	Value	Caps	Value	Transistors	Value
R1	1M	C1	47n	Q1	2n5457
R2	1M	C2	220n	Q2	2n5088
R3	1M	C3	470n	Q3	2n5088
R4	10k	C4	22uF	Q4	2n5457
R5	560k	C5	1uF		
R6	150k	C6	1uF	Switches	
R7	4k7	C7	1uF	KILL	3PDT Toggle
R8	180R	C8	470n		
R9	1k2	C9	100uF	Pots	
R10	1k	C10	100n	VOL	A25K
R11	15k			SPEED	C100K
R12	2M2	Diodes		DEPTH	B250K
R13	120k	D1	1n5817		
R14	68k	LED1	5mm		
R15	1k8	LED2	BiCLR 5mm		
R16	6k8				

## Build Notes:

The purchase of the main PCB board will include a foot switch wiring board and (1) ribbon connector (8-pin). This simplifies the wiring process while keeping troubleshooting, and noise to a minimum.

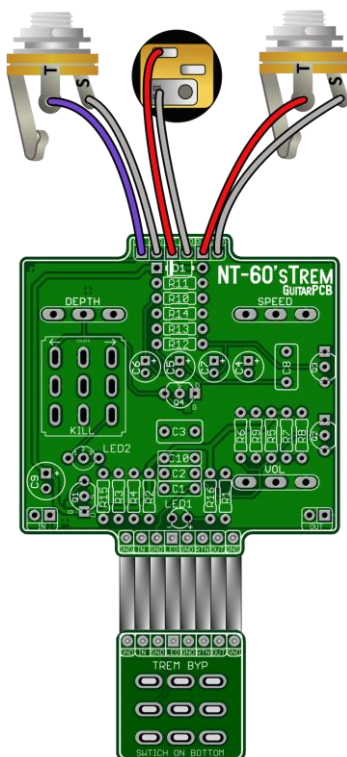
Note the extra IN / Out pads located at the bottom of the PCB which are conveniently placed if you wish to use side jacks.

Q1 and Q4: It is suggested to socket these JFETs. It is important for the Tremolo's function. You may also use J113 or MPF102. Do not use J201.

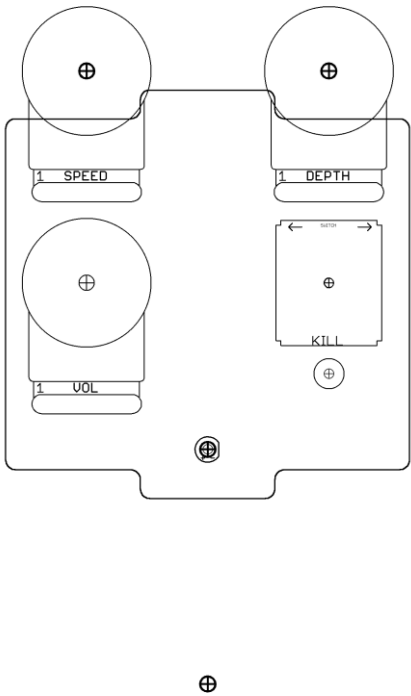
Use an 8-pin ribbon cable to connect the foot switch wiring board with the main board. The 3PDT wiring board contains an onboard (CLR) current limiting resistor. This is to protect and adjust the brightness of their corresponding main board status LEDs. A value of 1k8 to 4k7 may be used. The Tremolo status LED (CLR) current limiting resistor is on the main board located at R15. The wiring board (CLR) value rules apply there as well. A 1k8 value will be brighter than 4k7.

LED mounting: There are two LEDs. A Status LED and a Bi-color **Common Anode** LED to show the Tremolo "Kill" status. You will still benefit from the superior tone-enhancing buffer if you disengage the Tremolo effect by using the toggle switch instead of bypassing it with the foot switch.

Wiring Diagram



Generic Drill Template



Generic Label

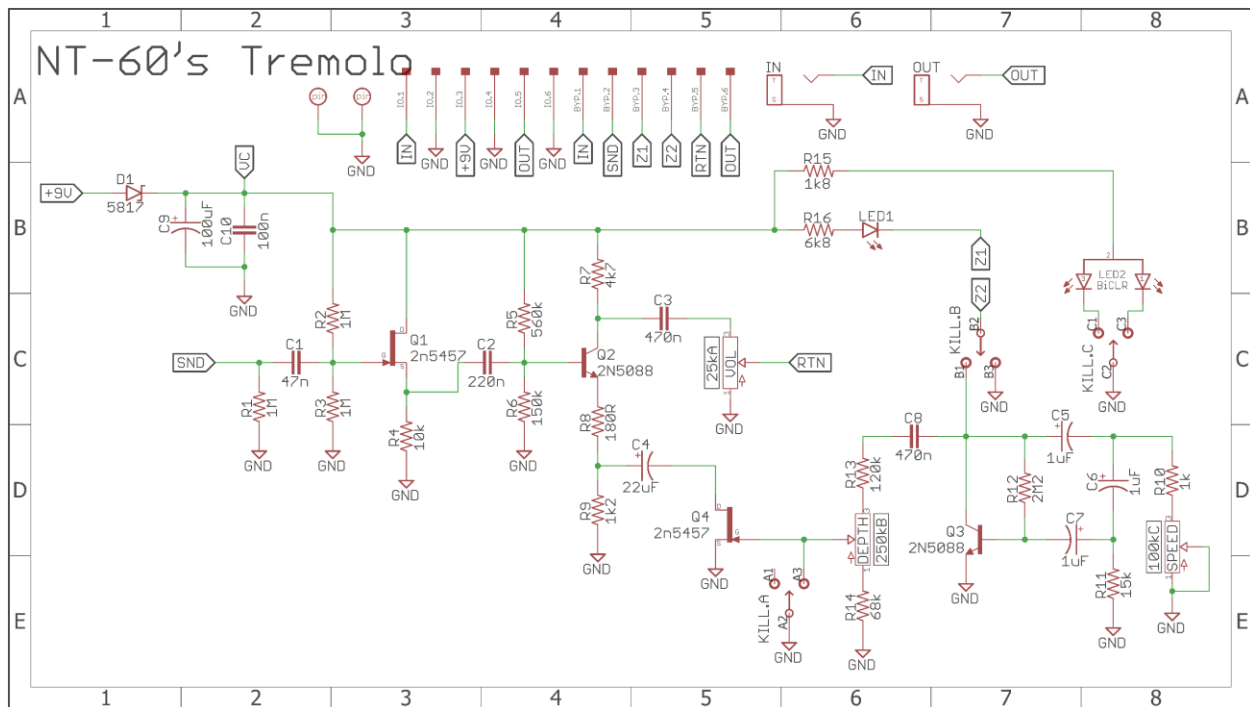
**SPEED**                      **DEPTH**

**VOLUME**                      **KILL**

**NOSTALGITONE**  
**TREMOLO**

Full-size drill templates are available on the final two pages of this build document.

## Schematic



**Q1 and Q4:** It is suggested to socket these JFETs. It is important for the Tremolo's function. You may also use J113 or MPF102. Do not use J201.

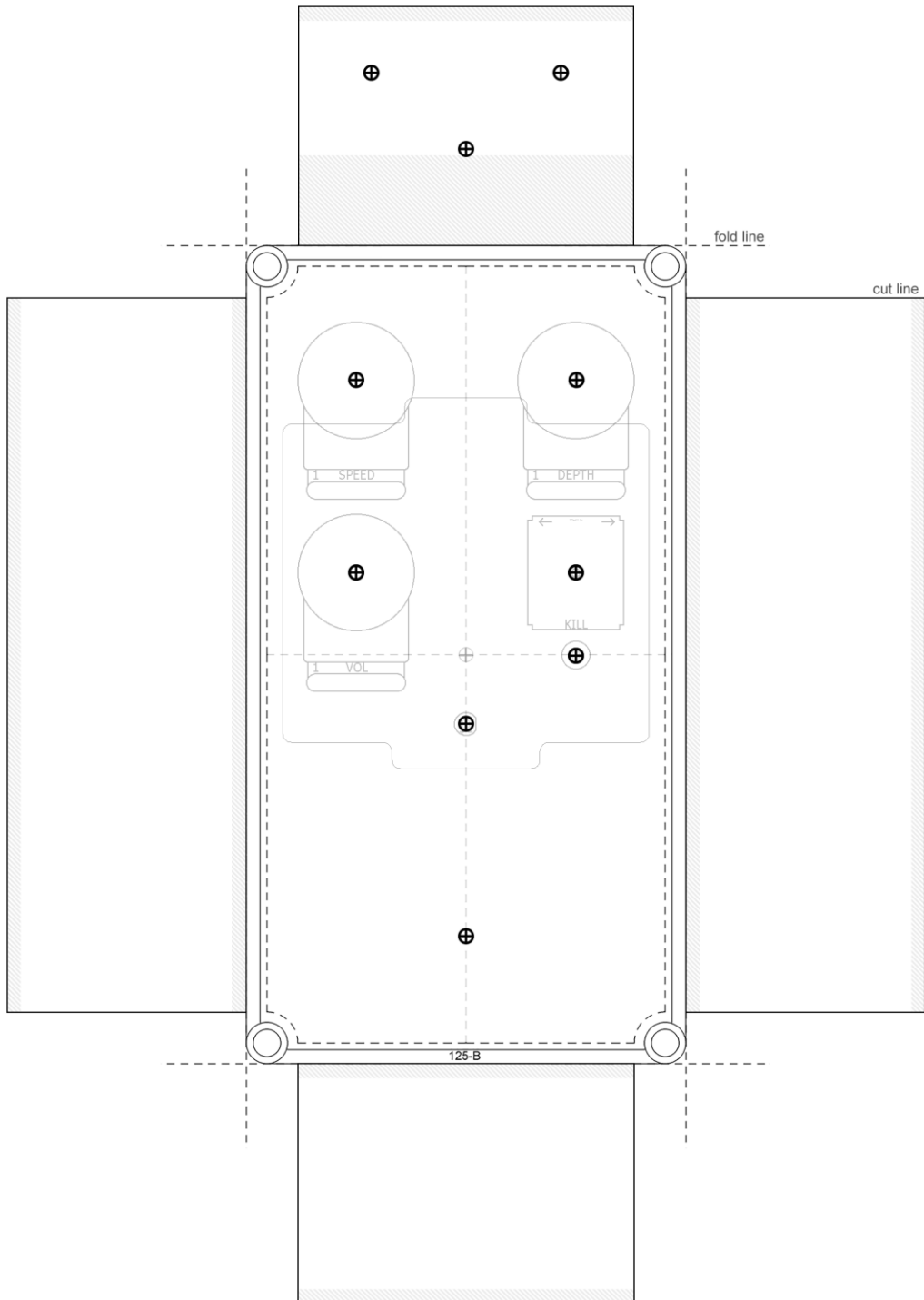


*This Build Document, PCB, Artwork and Schematic image are property of ©GuitarPCB.com. All copyrights, trademarks and artworks remain the property of their owners. Any company or product names used are for identification and educational purposes only. GuitarPCB is in no way affiliated with any said companies and are not to be misrepresented.*

**Full 125B Printable Drill Template on next page.**

- Order a pre-drilled enclosure from Tayda (registration required)
- **1590B** size – [Drilled Enclosure Link](#) Note: The 1590B has a 3mm Kill Switch status LED hole
- **125B** size (slightly larger) – [Drilled Enclosure Link](#) Note: 5mm Kill Switch status LED hole
- **Sample Enclosure Art 1590B size:** [PNG](#) – [PDF](#) – [SVG](#)
- PNG file suitable for waterslide decal
- PDF file 1590B suitable for submission to Tayda for UV printing.
- SVG zip file suitable for editing in Inkscape to create your own or convert to 125B size.

125B



1590B

