

---

# GuitarPCB Presents

## NOSTALGITONE SINGLES — “60’s OVERDRIVE”

---

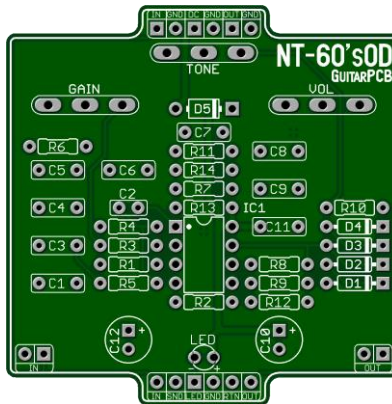
Are you ready to elevate your game? The **NOSTALGITONE 60’s OVERDRIVE** is here to give you the ultimate sonic experience.

**60’s Overdrive:** Step back in time to an era when iconic guitar tones ruled the stage. Representative of the tones used by Cream, Alvin Lee, Stones, and Jimi Hendrix, you too can capture that sweet, creamy crunch reminiscent of the legendary guitar sounds of the 1960s.

🔧 **Easy Wiring:** No more daunting wiring hassles! Say hello to beauty under the hood. Enjoy all-analog tones with modern features that will slip into your gig bag, ensuring you are always ready to unleash your musical magic.

🔧 **Available Components:** We recognize the hurdles of component availability. Rest assured, we've carefully selected components for the **NOSTALGITONE** series currently available from today’s popular vendors.

Do not settle for the ordinary when you can have extraordinary. Elevate your tone with the **NOSTALGITONE** series singles from GuitarPCB. Get yours today and discover a world of sonic possibilities like never before!



**Mainboard Dimensions – 2.10” x 2.12” – Perfectly sized for a 1590B or 125B enclosure**

**Included with each PCB purchase. – (1) Mainboard, (1) wiring board, and (1) ribbon cable.**

Bill of Materials:

Part	Value	Part	Value	Part	Value
R1	2M2	R14	47k	D1 - D4	1N4148
R2	1M	C1	10n	D5	1N5817
R3	10k	C2	47pF	IC1	TL072
R4	4k7	C3	10n		
R5	3k3	C4	10n	LED	Status LED
R6	4k7	C5	220n		
R7	4k7	C6	220n	VOL	A100K
R8	220k	C7	10n	TONE	B25K
R9	6k8	C8	10n	GAIN	B100K
R10	1k	C9	100n		
R11	6k8	C10	100uF	6 pin	ribbon
R12	1M	C11	100n		
R13	47k	C12	100uF	CLR	1k8-4k7

Build Notes:

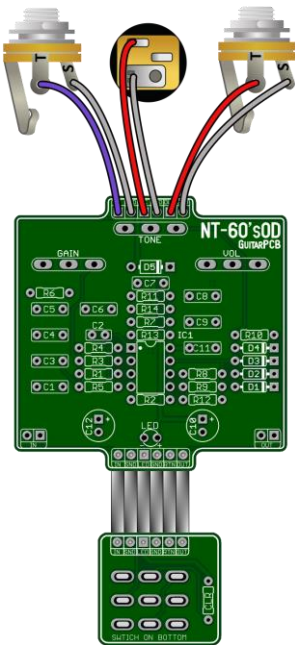
Included with the purchase of the main PCB board will be (1) a standard foot switch wiring board, and (1) a 6-pin ribbon cable. This simplifies the wiring process while keeping troubleshooting and noise to a minimum.

Note the extra IN / Out pads located at the bottom of the PCB which are conveniently placed if you wish to use side jacks. Round pads = Ground.

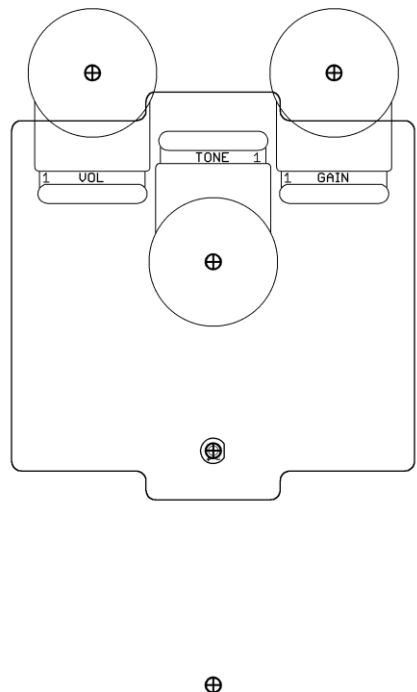
Use a standard 6-pin ribbon cable to connect the foot switch wiring board with the main board. The 3PDT wiring board contains an onboard (CLR) current limiting resistor. This is to protect and adjust the brightness of their corresponding main board status LEDs. A value of 1k8 to 4k7 may be used. 1k8 is bright and 4k7 is dimmer.

LED mounting: A main Status LED is to show the active status. Use a 1k8 to 4k7 CLR mounted on the wiring board.

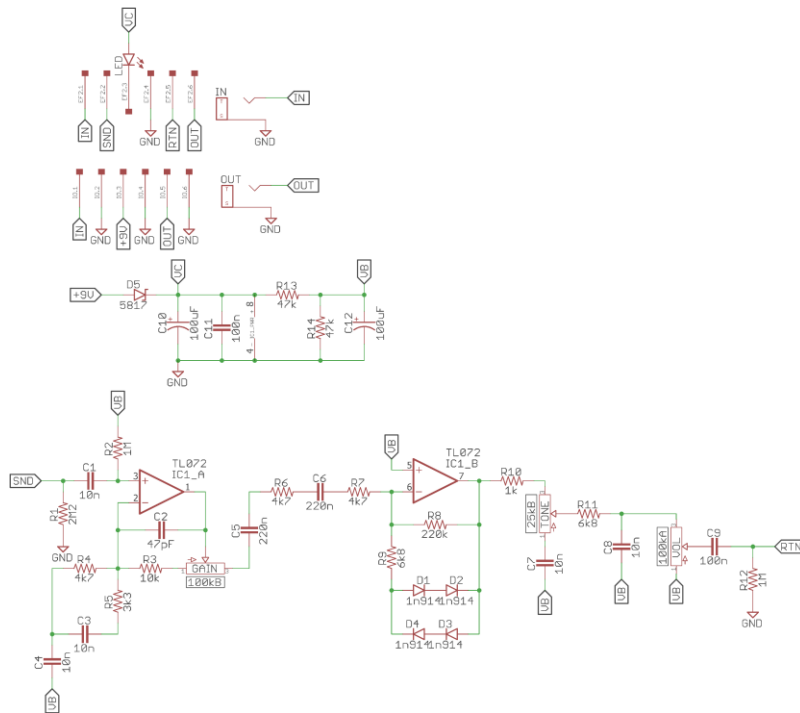
Wiring Diagram



Drill Template



## Schematic



**This Build Document, PCB, Artwork and Schematic image are property of @GuitarPCB.com**  
All copyrights, trademarks and artworks remain the property of their owners.  
Any company or product names used are for identification and educational purposes only.  
GuitarPCB is in no way affiliated with any said companies and are not to be misrepresented.