
GuitarPCB Presents

NOSTALGITONE SINGLES — “60’s FUZZ”

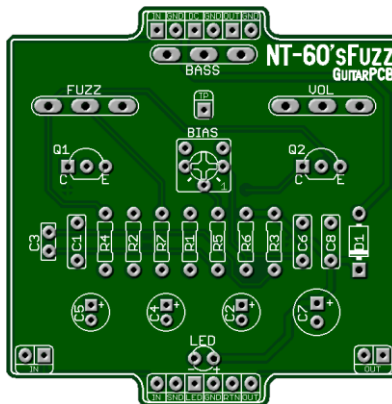
Are you ready to elevate your game? The **NOSTALGITONE 60’s FUZZ** is here to give you the ultimate sonic experience.

60’s Fuzz: Dive into the lush, velvety fuzz tones reminiscent of the legendary vintage Fuzz Face. Our design integrates attainable NPN silicon transistors to bolster stability, guaranteeing that you capture that iconic tone and enjoy unwavering performance. Plus, with the convenience of an onboard trimmer, you can fine-tune your fuzz experience, from smooth, flowing tones to edgier, more gated textures.

🔧 **Easy Wiring:** No more daunting wiring hassles! Say hello to beauty under the hood. Enjoy all-analog tones with modern features that will slip into your gig bag, ensuring you are always ready to unleash your musical magic.

🔧 **Available Components:** We recognize the hurdles of component availability. Rest assured, we’ve carefully selected components for the **NOSTALGITONE** series currently available from today’s popular vendors.

Do not settle for the ordinary when you can have extraordinary. Elevate your tone with the **NOSTALGITONE** series singles from GuitarPCB. Get yours today and discover a world of sonic possibilities like never before!



Mainboard Dimensions – 2.10” x 2.12” – Perfectly sized for a 1590B or 125B enclosure

Included with each PCB purchase. – (1) Mainboard, (1) wiring boards, and (1) ribbon cable.

Bill of Materials:

Part	Value		Part	Value		Part	Value
R1	1k		C1	4n7		Q1	BC183A
R2	2M2		C2	1uF		Q2	BC183B
R3	39k		C3	27pF			
R4	120k		C4	10uF		FUZZ	B1k
R5	4k7		C5	4u7		VOL	C500K
R6	330R		C6	10n		BASS	C100K
R7	27R		C7	100uF		BIAS	10k
D1	1N5817		C8	100n		TP	Test Pad

Build Notes:

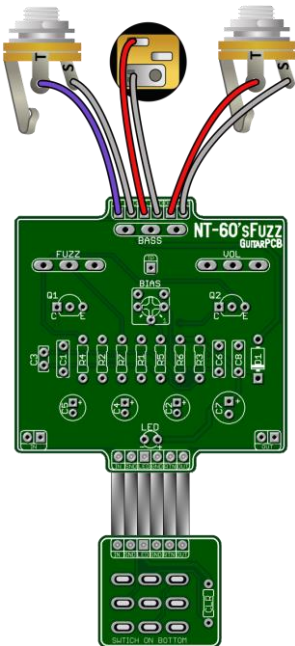
Included with the purchase of the main PCB board will be (1) standard foot switch wiring board (6 pins), and (1) 6 pin ribbon cable. This simplifies the wiring process while keeping troubleshooting and noise to a minimum.

Note the extra IN / Out pads located at the bottom of the PCB which are conveniently placed if you wish to use side jacks.

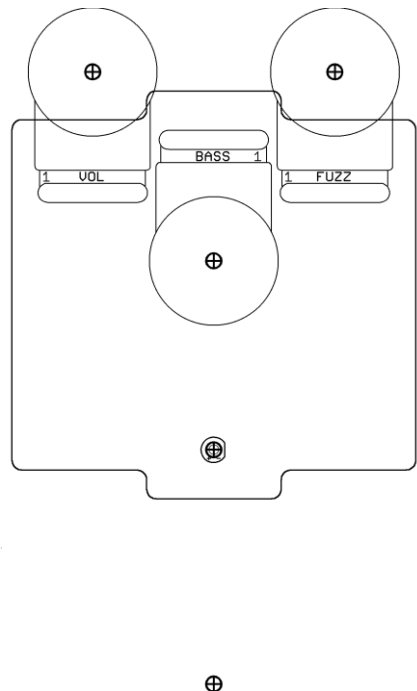
Use a standard 6-pin ribbon cable to connect the foot switch wiring board with the main board. The 3PDT wiring board contains an onboard (CLR) current limiting resistor. This is to protect and adjust the brightness of their corresponding main board status LEDs. A value of 1k8 to 4k7 may be used. BIAS1 is a 10k Trimmer. Extra trimmer pads are to accommodate several trimmer packages. Adjust till it sounds right for you. Choose between smooth or more gated tones. Use a DMM and test your voltage using TP1 (test pad + ground). 4.5v plus = smooth, 3v = gated.

LED mounting: A main Status LED is to show the active status. Use a 1k8 to 4k7 CLR mounted on the wiring board. 1k8 is Bright, 4k7 is dimmer.

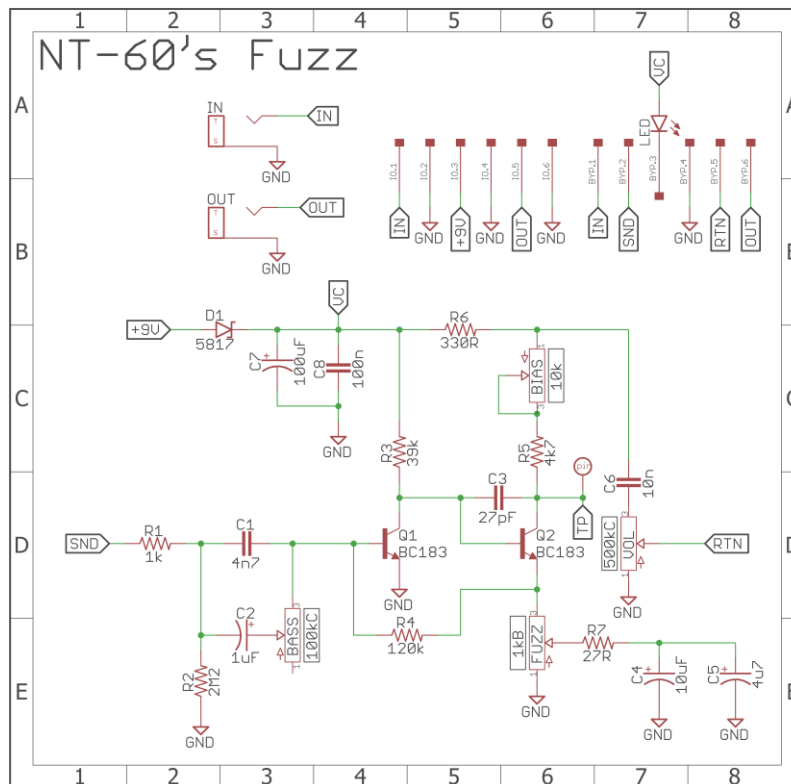
Wiring Diagram



Drill Template



Schematic



This Build Document, PCB, Artwork and Schematic image are property of ©GuitarPCB.com
 All copyrights, trademarks and artworks remain the property of their owners.
 Any company or product names used are for identification and educational purposes only.
 GuitarPCB is in no way affiliated with any said companies and are not to be misrepresented.