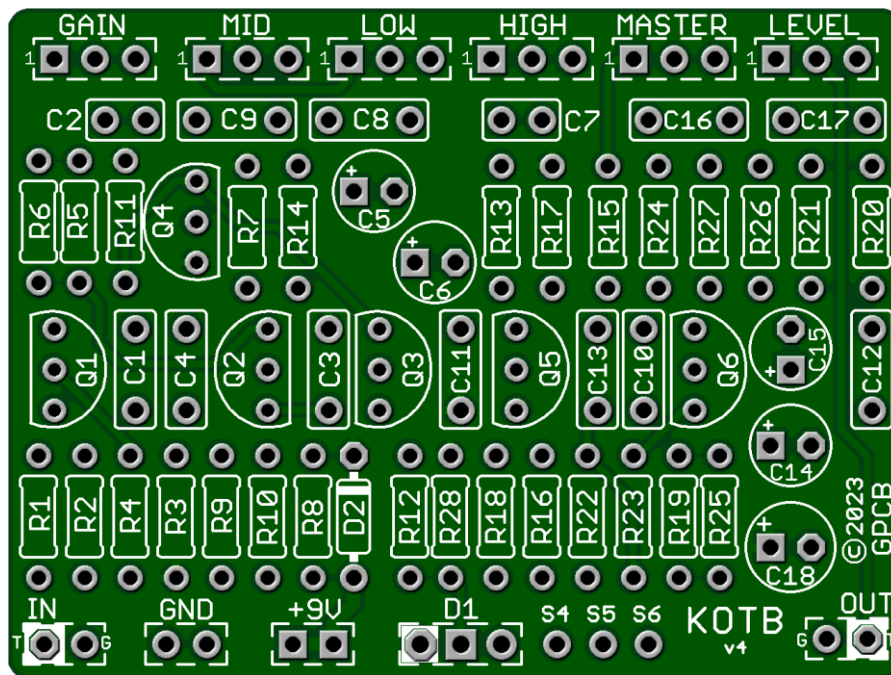


K.O.T.B. - King of the Brits v4

This circuit provides a range of cranked “Brown Sound” tones that emulate a modded 80’s Marshall amplifier. Find a range of distortion between a JCM800 amp that includes an EQ circuit in series for even more saturation!



Board Dimensions (W x H)

2.2" x 1.61"

Part	Value
R1	1M
R2	33k
R3	22k
R4	3k9
R5	470k
R6	470k
R7	22k
R8	3k9
R9	470k
R10	470k
R11	15k
R12	3k9

Part	Value
R13	100k
R14	33k
R15	100k
R16	1M
R17	15k
R18	3k3
R19	1k
R20	15k
R21	4k7
R22	220k
R23	33k
R24	3k9

Part	Value
R25	470R
R26	100k
R27	6k8
R28	3k3
C1	2n2
C2	560p
C3	10n
C4	10n
C5	1u
C6	2u2
C7	560p

Part	Value
C8	22n
C9	22n
C10	22n
C11	1n
C12	100n
C13	22n
C14	10u
C15	10u
C16	10n
C17	10n
C18	100u

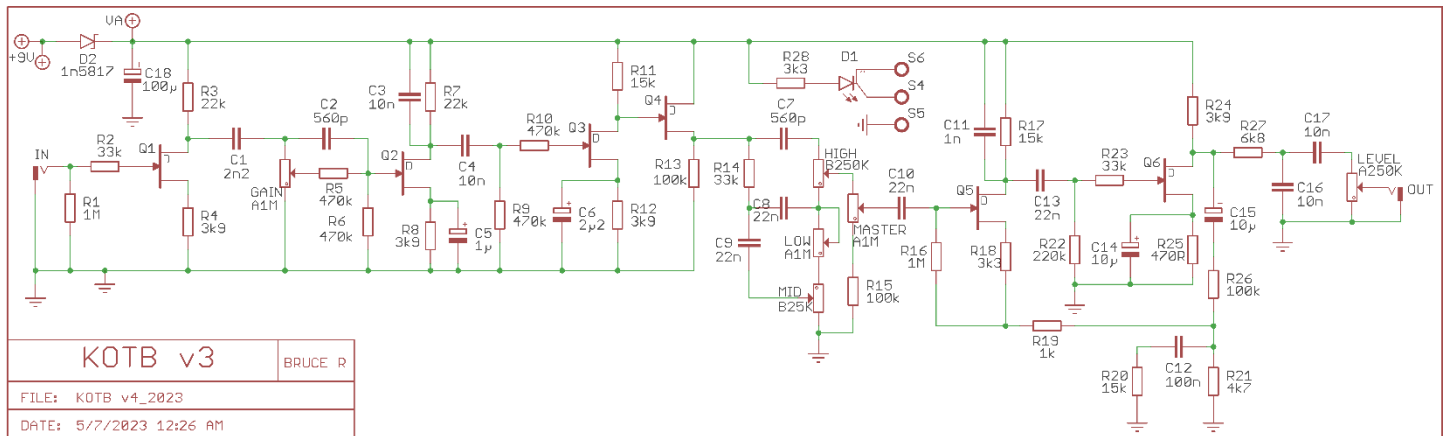
Part	Value
D1	Status LED
D2	1n5817
MASTER	A1M
LEVEL	A250K
GAIN	A1M
HIGH	B250K
MID	B25K
LOW	A1M
Q1 - Q6	2N5457

STATUS LED

D1 is a Status LED that can use either Bi-Color Common Anode or a Standard On/Off LED.
R28 is the CLR for the Status LED

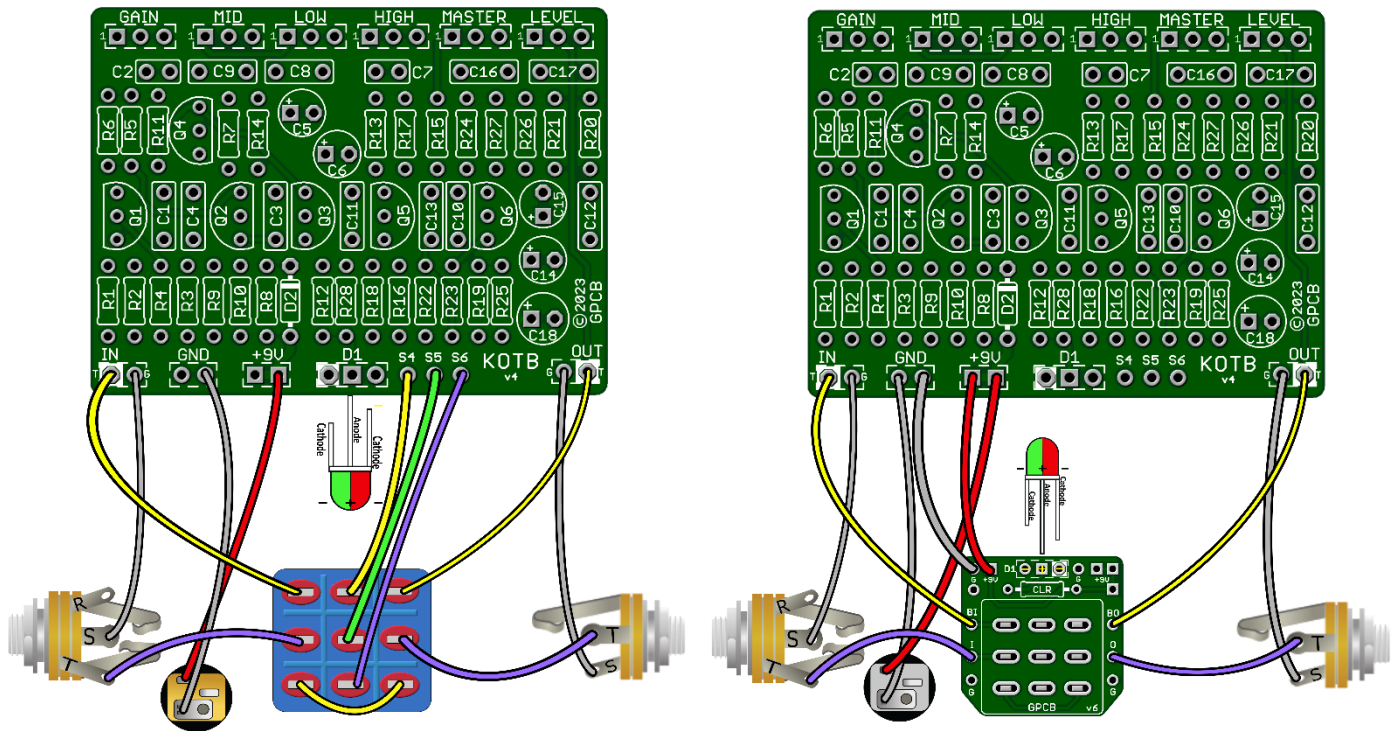
New in this GuitarPCB 2023 version release:

- Large off-board wiring pads and additional cosmetic upgrades.
- Incorporated a 1N5817 protection diode.
- **Note:** This PCB requires hand-wired pots in order to keep the size down as well as give you drill layout freedom.



The Master control is a post-EQ control that helps attain even higher levels of saturation prior to hitting the stage at Q5 and the Level is an overall volume control of the entire circuit. There is a subtle difference between the ranges of distortion since a cranked amp is what this is designed to produce and delivers in spades! This circuit does not produce clean or low-gain tones.

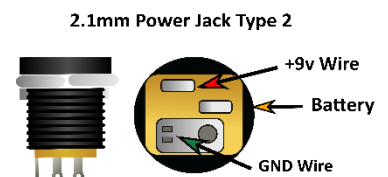
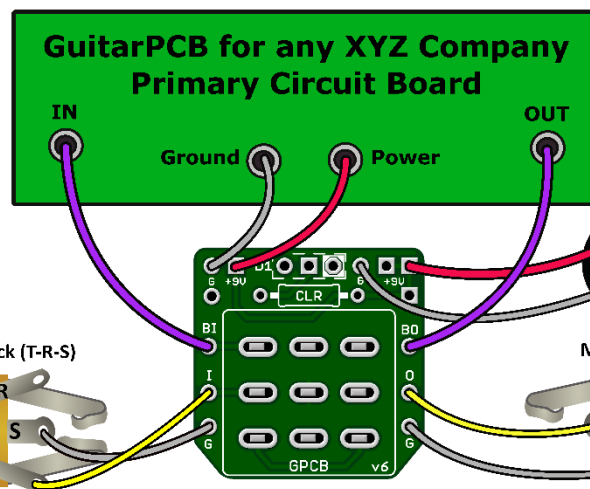
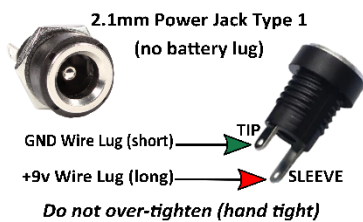
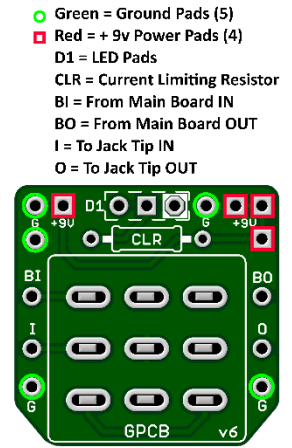
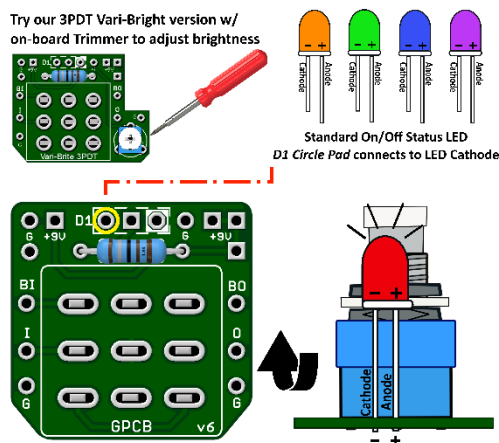
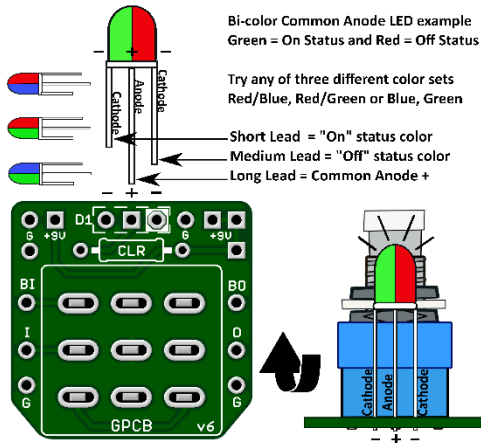
WIRING



Note: Status LED can be mounted to the main board or 3PDT wiring board if used. Choose your favorite location.



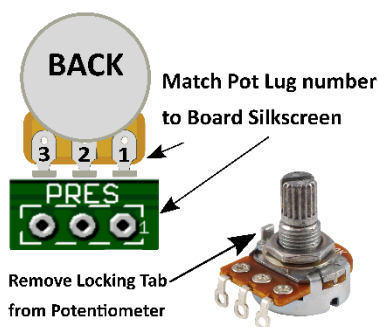
GuitarPCB Tip Sheet



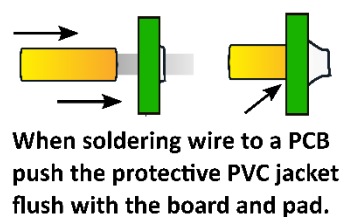
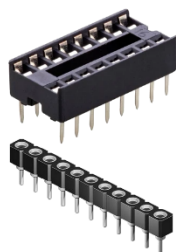
T = Tip
R = Ring
S = Sleeve

T = Tip
S = Sleeve

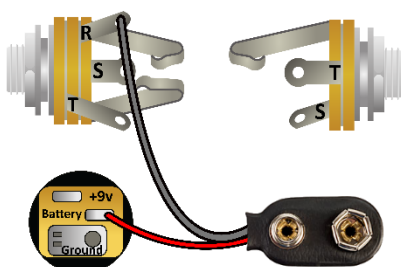
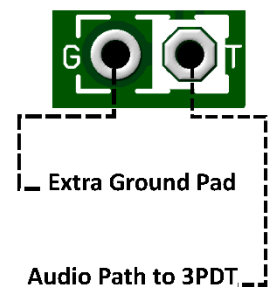
Multiple +9v and Ground Pads are convenient hookup points for additional circuits within the same enclosure. This also allows for diverse wiring schemes to suit individual needs.



Sockets make troubleshooting easier



Main Board IN/OUT Pads



Input/Output Jack Wiring

T = Tip | R = Ring | S = Sleeve

A Stereo Jack is only needed if using a Battery. Otherwise use a Mono Jack
Battery Strap RED wire is connected to Power Jack
Battery Strap Black wire is connected to RING (stereo jack)
If wiring an LED to our 3PDT Wiring Board then S4, S5 & S6 are not needed



This Build Document, PCB, Artwork and Schematic image are property of ©GuitarPCB.com
All copyrights, trademarks and artworks remain the property of their owners.
Any company or product names used are for identification and educational purposes only.
GuitarPCB is in no way affiliated with any said companies and are not to be misrepresented.