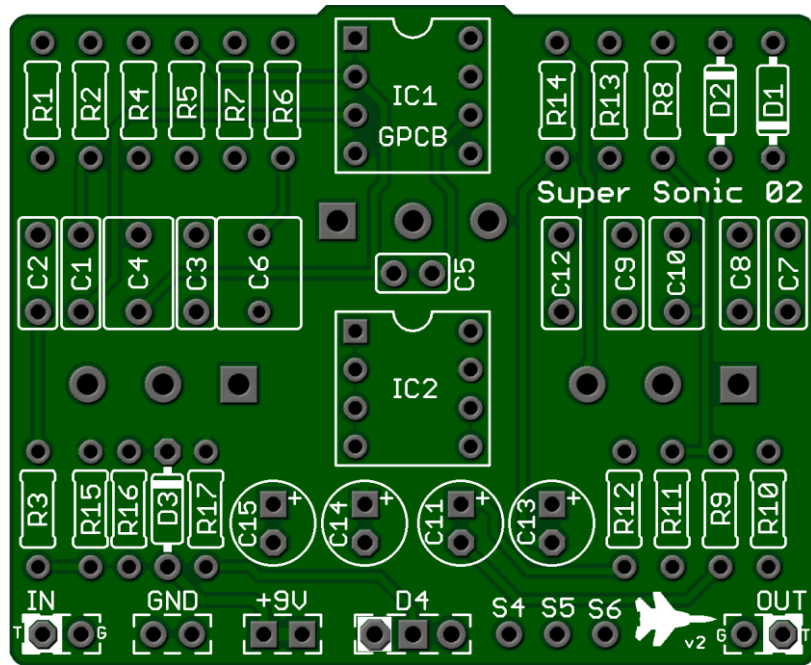


Super Sonic v2

A fantastic recreation of an outrageously expensive offering that will leave you smiling in the “pink”. This PCB is based on the Cornish SS-2 which now gives you the opportunity to create familiar tones that even Sir David would love! A smoother and more defined Fuzz/Distortion tone to get you Comfortably Numb.



Board Dimensions (W x H) 2.10" x 1.72"

Part	Value
R1	1M
R2	10k
R3	1M
R4	510R
R5	150k
R6	10k
R7	100k
R8	1M
R9	1M
R10	2k4
R11	10k
R12	6k8
R13	10k
R14	100R

Part	Value
R15	100k
R16	100k
R17	1k8*
C1	10n
C2	1n
C3	4n7
C4	470n
C5	10p
C6	1u
C7	10n
C8	10n
C9	10n
C10	220n
C11	10u

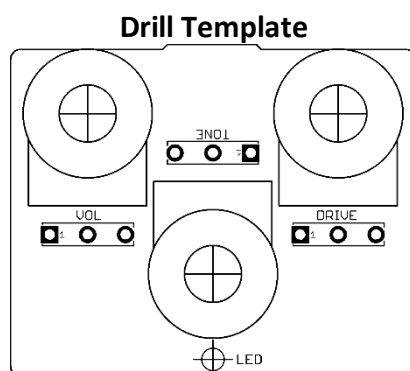
Part	Value
C12	1n
C13	10u
C14	100u
C15	10u
D1	1N34A
D2	1N34A
D3	1N5817
D4	Status Led
IC1	TL071
IC2	TL071
DRIVE	B50k
TONE	B20k
VOL	A100k

STATUS LED

*D4 is a Status LED that can use either Bi-Color Common Anode or a Standard On/Off LED.

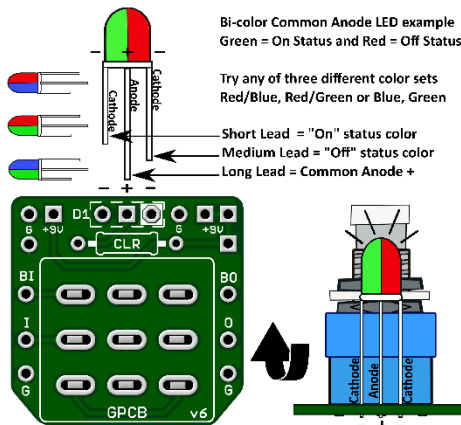
New in this GuitarPCB release:

- On-board potentiometers
- 1N5817 circuit protection Diode
- Extra 9v and ground pads for convenient wiring in combo builds or mods.
- On-board potentiometers

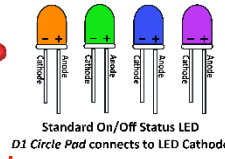
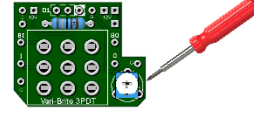




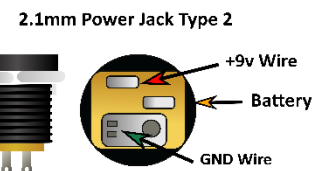
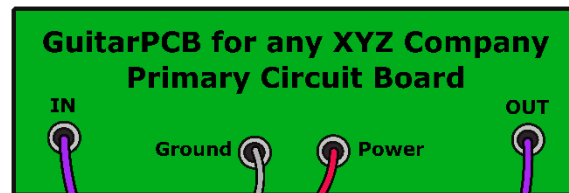
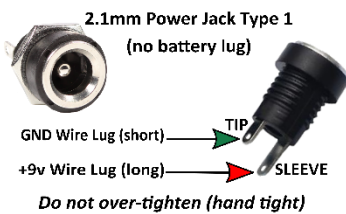
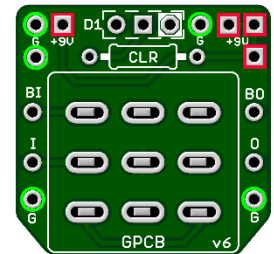
GuitarPCB Tip Sheet



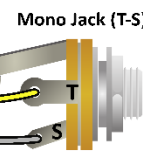
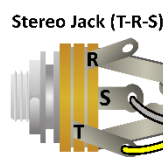
Try our 3PDT Vari-Bright version w/ on-board Trimmer to adjust brightness



- Green = Ground Pads (5)
- Red = +9v Power Pads (4)
- D1 = LED Pads
- CLR = Current Limiting Resistor
- BI = From Main Board IN
- BO = From Main Board OUT
- I = To Jack Tip IN
- O = To Jack Tip OUT

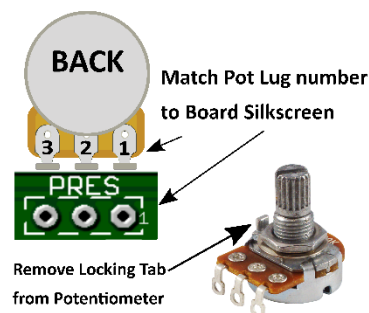


T = Tip
R = Ring
S = Sleeve

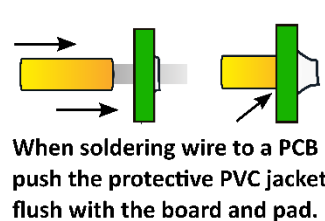
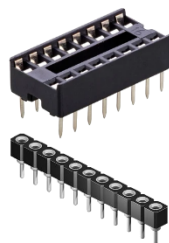


T = Tip
S = Sleeve

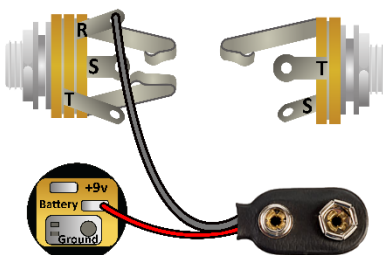
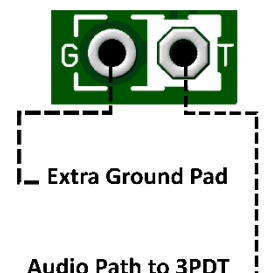
Multiple +9v and Ground Pads are convenient hookup points for additional circuits within the same enclosure. This also allows for diverse wiring schemes to suit individual needs.



Sockets make troubleshooting easier



Main Board IN/OUT Pads



Input/Output Jack Wiring

T = Tip | R = Ring | S = Sleeve

A Stereo Jack is only needed if using a Battery. Otherwise use a Mono Jack
Battery Strap RED wire is connected to Power Jack
Battery Strap Black wire is connected to RING (stereo jack)
If wiring an LED to our 3PDT Wiring Board then S4, S5 & S6 are not needed



This Build Document, PCB, Artwork and Schematic image are property of ©GuitarPCB.com
All copyrights, trademarks and artworks remain the property of their owners.
Any company or product names used are for identification and educational purposes only.
GuitarPCB is in no way affiliated with any said companies and are not to be misrepresented.