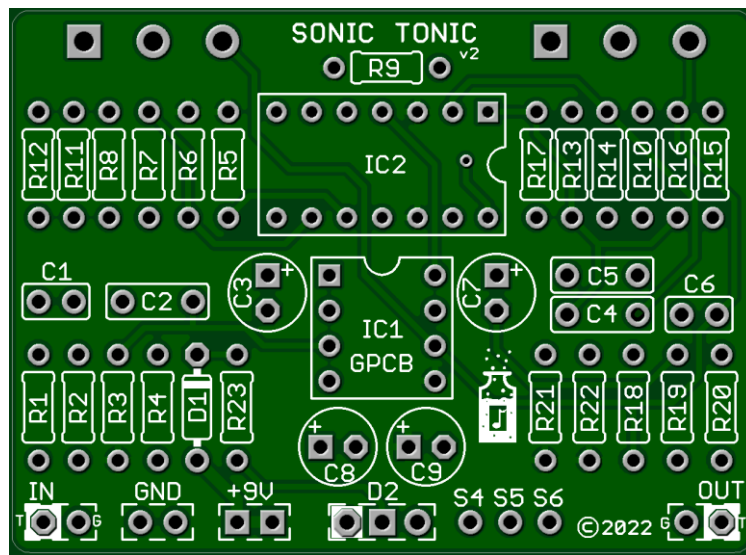


Sonic Tonic v2

This powerful circuit based on the BBE Sonic Maximizer restores clarity, definition, and dynamic range to your music, providing you with a rich, full-bodied sound that will bring your music to life. Whether you're playing live or recording in the studio, the Sonic Tonic will deliver outstanding results every time. This amazing circuit works by correcting phase relationships, restoring harmonic content, and increasing perceived loudness. These modifications result in a clearer, more dynamic, and more musical sound that can bring your music to life.

So why wait? Get yours today and experience the ultimate in sound enhancement!



Board Dimensions 2.10" x 1.53"

Bill of Materials

Part	Value
R1	1k
R2	10M
R3	1M
R4	1k
R5	1M
R6	10k
R7	10k
R8	22k
R9	22k
R10	22k
R11	22k

Part	Value
R12	10k
R13	22k
R14	22k
R15	10k
R16	39k
R17	22k
R18	39k
R19	100k
R20	1k
R21	47k
R22	47k

Part	Value
R23	1k8*
C1	100p
C2	4n7
C3	10u
C4	3n3
C5	47n
C6	100p
C7	10u
C8	100u
C9	100u

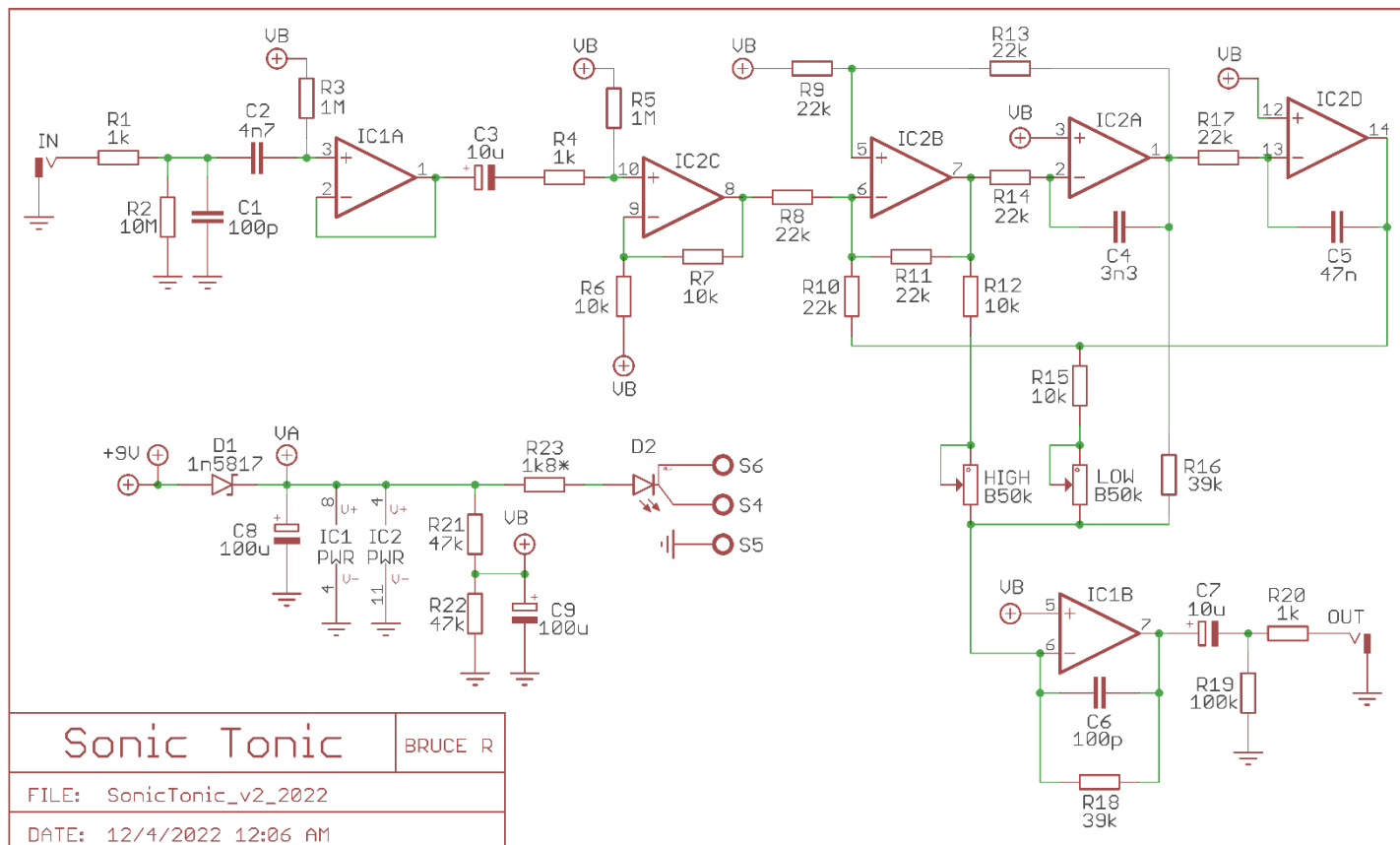
Part	Value
D1	1n5817
D2	Status Led
IC1	TL072
IC2	TL074
HIGH	B50k
LOW	B50k

STATUS LED

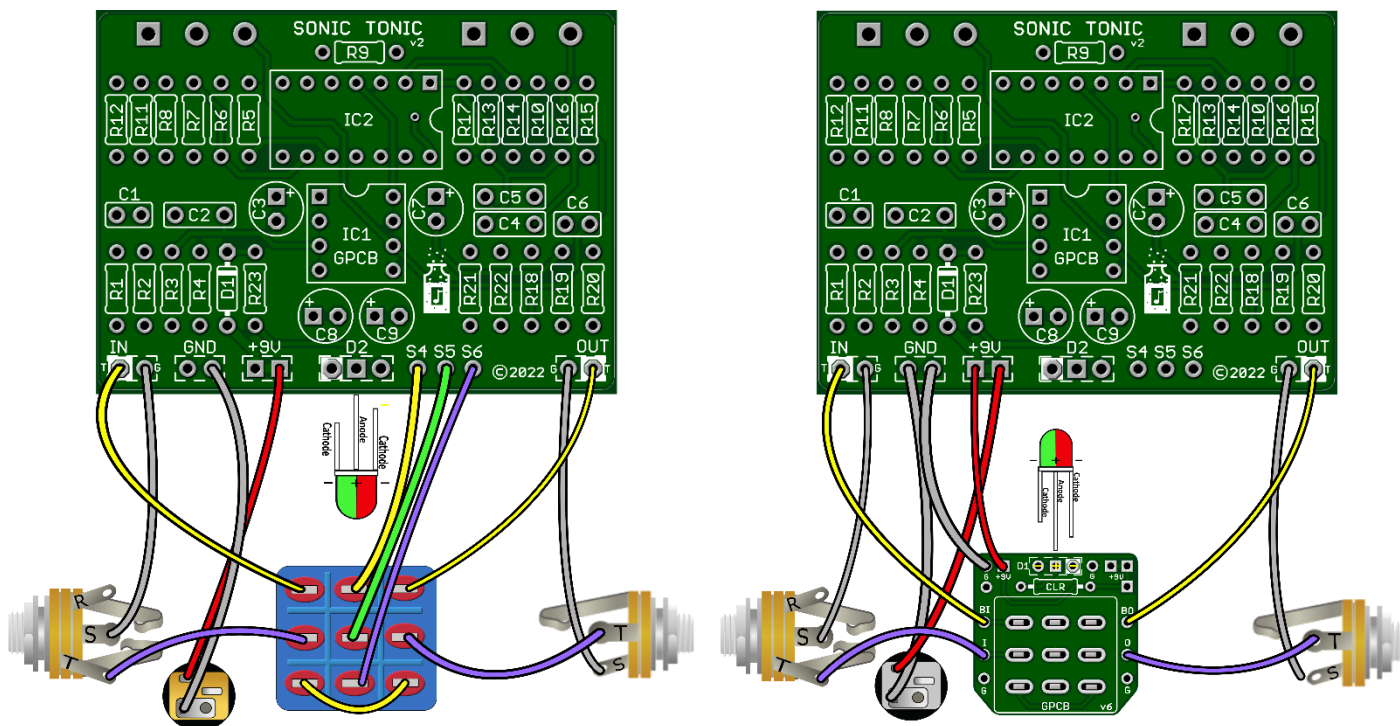
*D2 is a Status LED that can be either a Bi-Color Common Anode or a Standard On/Off LED. (See Tip Sheet)

New in this GuitarPCB v2 release:

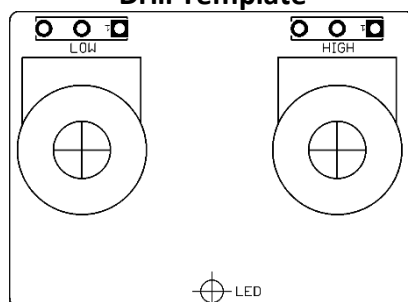
- Added (D1) 1N5817 circuit protection diode
- On-board potentiometers
- Better cosmetic layout.



Wiring Diagram

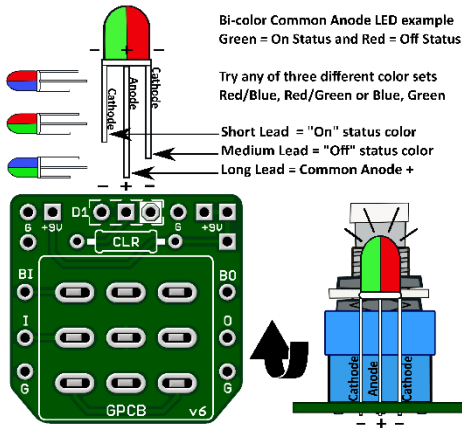


Drill Template

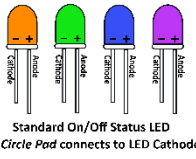
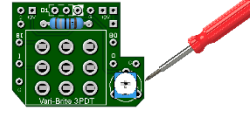




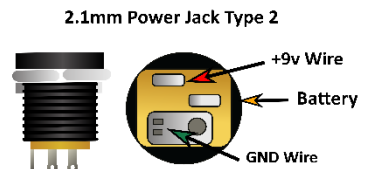
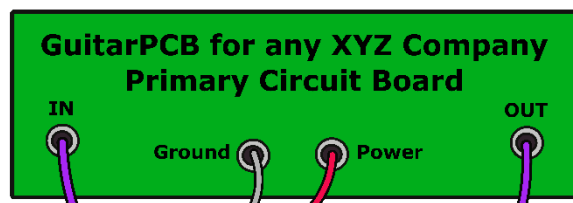
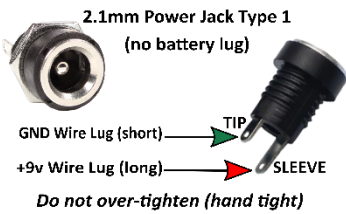
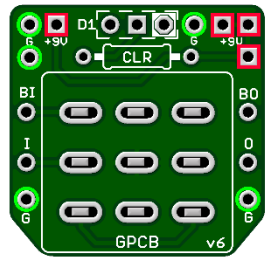
GuitarPCB Tip Sheet



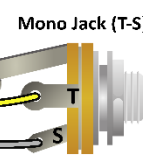
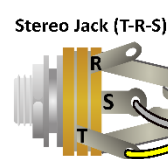
Try our 3PDT Vari-Bright version w/ on-board Trimmer to adjust brightness



- Green = Ground Pads (5)
- Red = +9v Power Pads (4)
- D1 = LED Pads
- CLR = Current Limiting Resistor
- BI = From Main Board IN
- BO = From Main Board OUT
- I = To Jack Tip IN
- O = To Jack Tip OUT

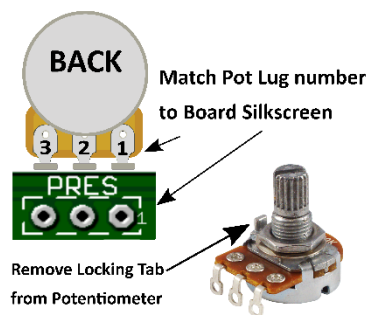


T = Tip
R = Ring
S = Sleeve

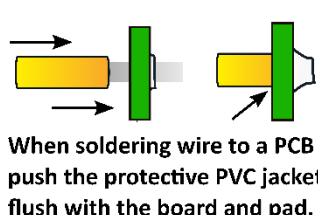
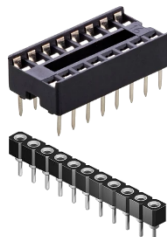


T = Tip
S = Sleeve

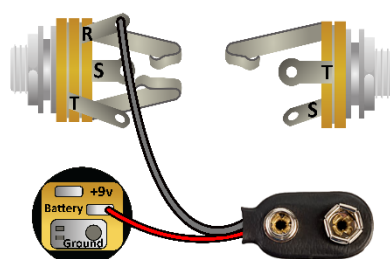
Multiple +9v and Ground Pads are convenient hookup points for additional circuits within the same enclosure. This also allows for diverse wiring schemes to suit individual needs.



Sockets make troubleshooting easier



Main Board IN/OUT Pads



Input/Output Jack Wiring

T = Tip | R = Ring | S = Sleeve

A Stereo Jack is only needed if using a Battery. Otherwise use a Mono Jack
 Battery Strap RED wire is connected to Power Jack
 Battery Strap Black wire is connected to RING (stereo jack)
 If wiring an LED to our 3PDT Wiring Board then S4, S5 & S6 are not needed



This Build Document, PCB, Artwork and Schematic image are property of ©GuitarPCB.com
 All copyrights, trademarks and artworks remain the property of their owners.
 Any company or product names used are for identification and educational purposes only.
 GuitarPCB is in no way affiliated with any said companies and are not to be misrepresented.