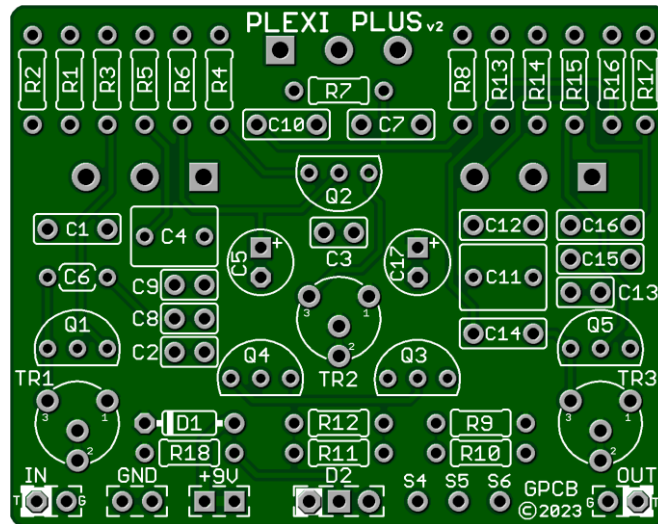


Plexi Plus v2

The Plexi Plus v2 delivers the rich, crunchy sound of a Marshall Plexi amp in a convenient and portable design. Perfect for live performances or recording sessions. Experience the classic rock sound of the 60s and 70s today. With precise control over both Normal and Brite channels, you can easily shape your sound to suit any genre and playing style. Whether you're after the classic growl of a 1960s Marshall Plexi or the modern crunch of a 1970s model, this circuit has got you covered.



Board Dimensions (W x H) 2.20" x 1.75"

Part	Value
R1	1M
R2	2M2
R3	33k
R4	33k
R5	2k7
R6	820R
R7	470k
R8	470k
R9	1M
R10	1M
R11	33k
R12	1M

Part	Value
R13	100k
R14	100k
R15	1k
R16	47k
R17	47k
R18	1k8
C1	22n
C2	180p
C3	180p
C4	100n
C5	47u

Part	Value
C6	470p
C7	22n
C8	100p
C9	470p
C10	100n
C11	1u
C12	100n
C13	180p
C14	100n
C15	2n2
C16	2n2
C17	100u

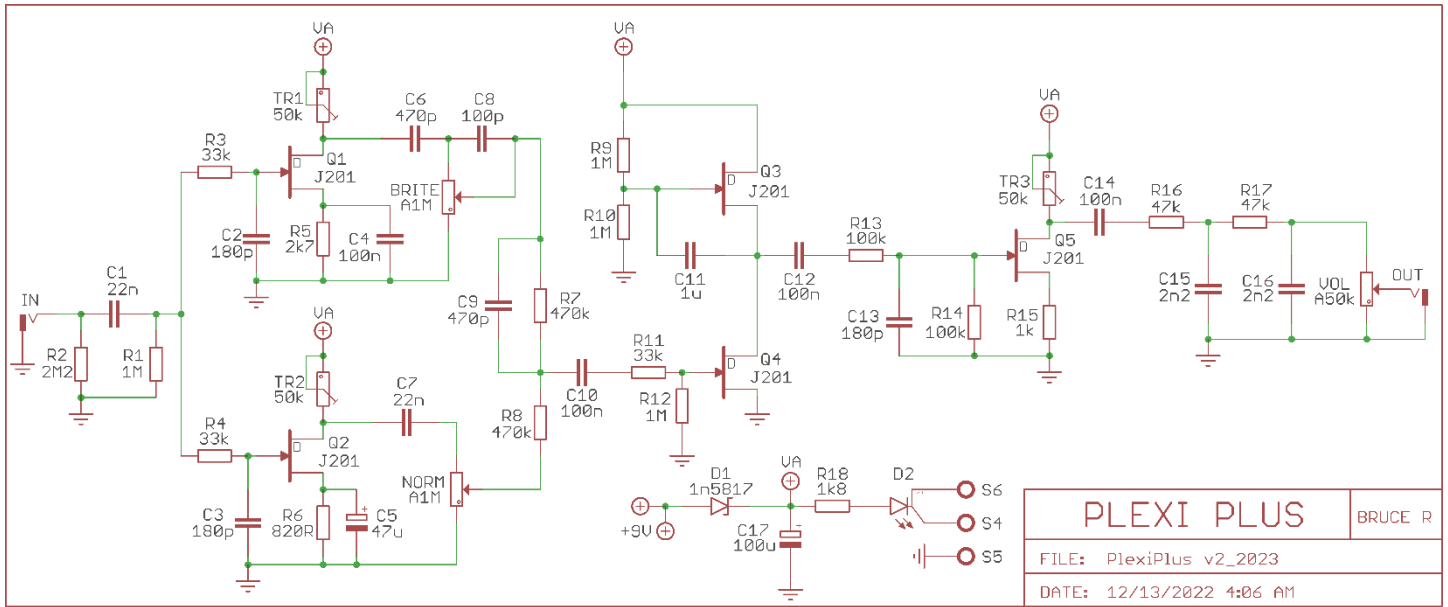
Part	Value
D1	1n5817
D2	Status Led
VOL	A50k
NORM	A1M
BRITE	A1M
Q1 - Q5	J201
TR1	50k
TR2	50k
TR3	50k

STATUS LED

*D2 is a Status LED that can be either a Bi-Color Common Anode or a Standard On/Off LED. (See Tip Sheet)

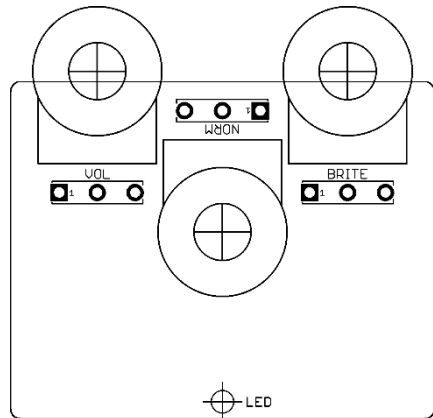
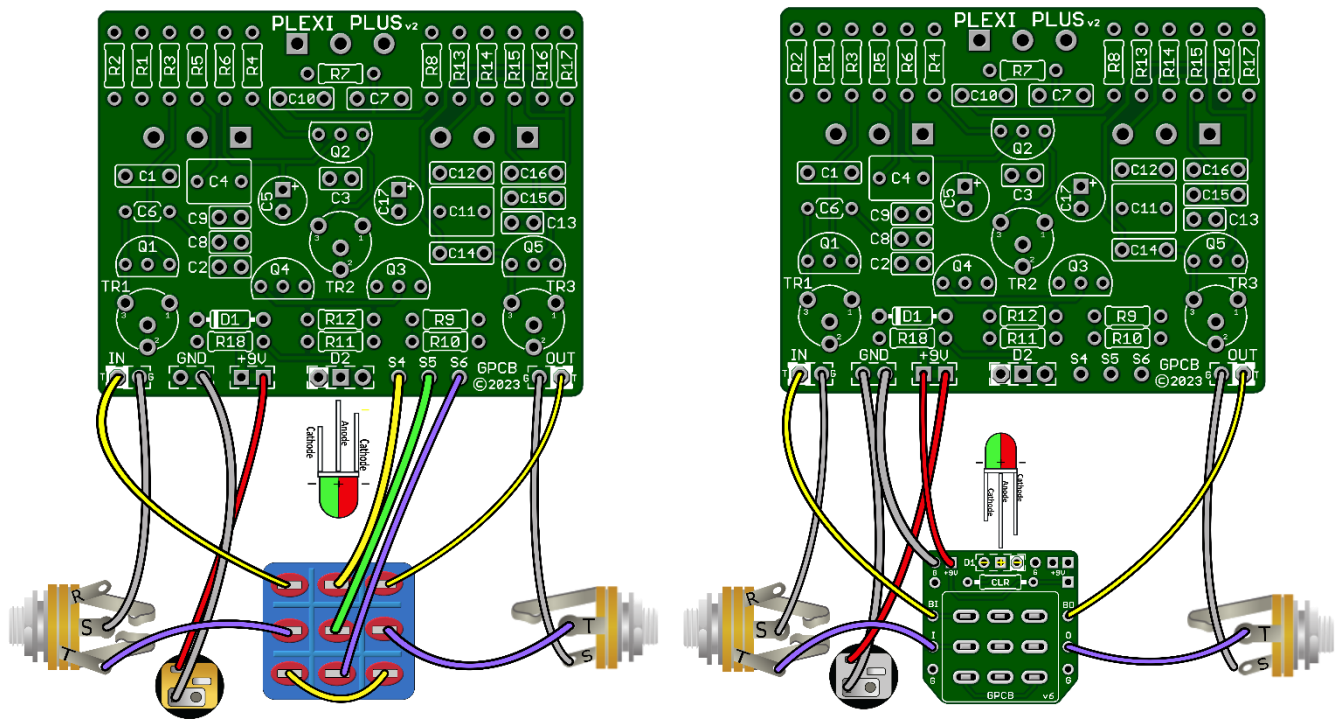
New in this GuitarPCB v2 release:

- Added (D1) 1N5817 circuit protection diode.
- On-board potentiometers.
- New layout.



Important Bias Info: There are three (3) 50k trimmers (bias pots) used to bias Q1, Q2 and Q5. Using a DMM, set the voltage at the Drain leg of each transistor to roughly 5v using TR1/Q1, TR2/Q2 and TR3/Q5.

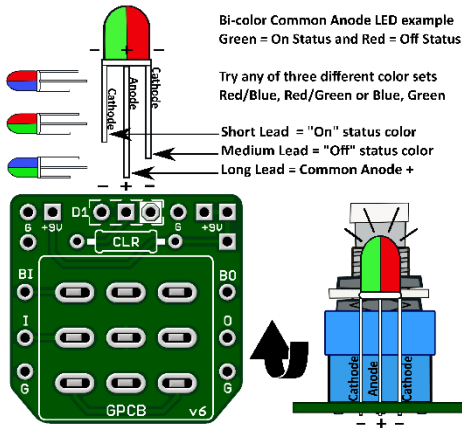
Wiring Diagram



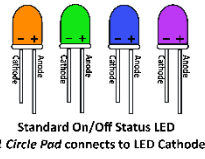
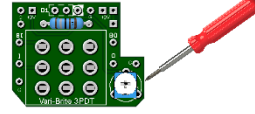
Drill Template



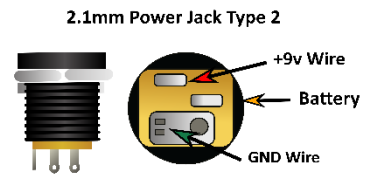
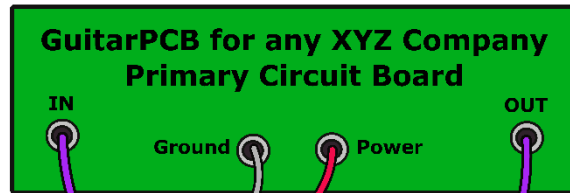
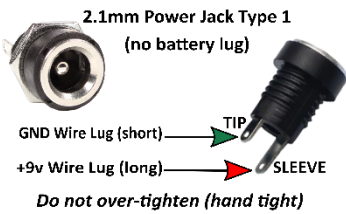
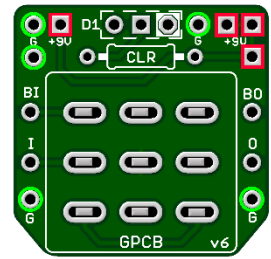
GuitarPCB Tip Sheet



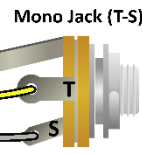
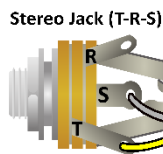
Try our 3PDT Vari-Bright version w/
on-board Trimmer to adjust brightness



- Green = Ground Pads (5)
- Red = +9v Power Pads (4)
- D1 = LED Pads
- CLR = Current Limiting Resistor
- BI = From Main Board IN
- BO = From Main Board OUT
- I = To Jack Tip IN
- O = To Jack Tip OUT

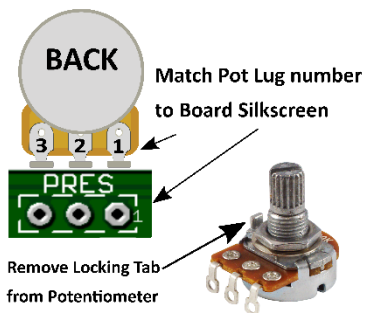


T = Tip
R = Ring
S = Sleeve

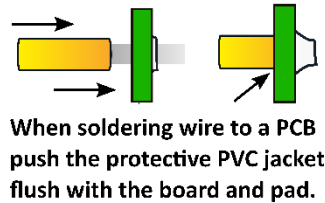
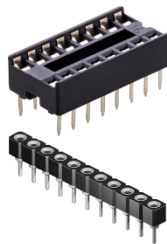


T = Tip
S = Sleeve

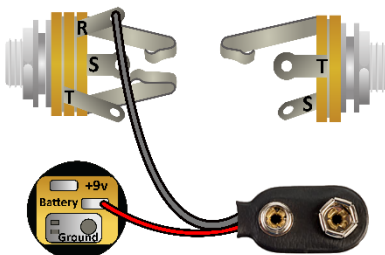
Multiple +9v and Ground Pads are convenient hookup points for additional circuits within the same enclosure. This also allows for diverse wiring schemes to suit individual needs.



Sockets make troubleshooting easier



Main Board IN/OUT Pads



Input/Output Jack Wiring

T = Tip | R = Ring | S = Sleeve

A Stereo Jack is only needed if using a Battery. Otherwise use a Mono Jack
Battery Strap RED wire is connected to Power Jack
Battery Strap Black wire is connected to RING (stereo jack)
If wiring an LED to our 3PDT Wiring Board then S4, S5 & S6 are not needed



This Build Document, PCB, Artwork and Schematic image are property of ©GuitarPCB.com
All copyrights, trademarks and artworks remain the property of their owners.
Any company or product names used are for identification and educational purposes only.
GuitarPCB is in no way affiliated with any said companies and are not to be misrepresented.