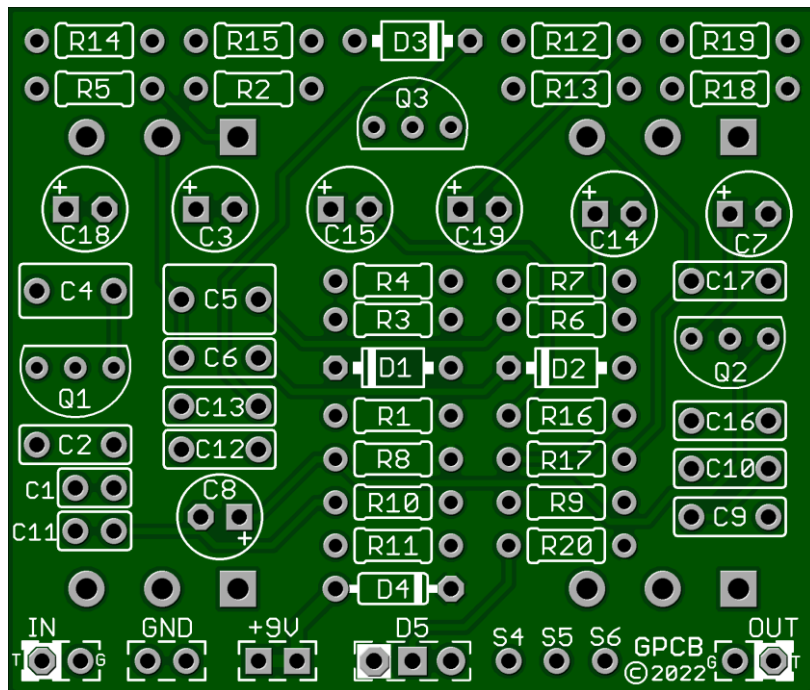


Tweed King

The Tweed King is a circuit that recreates the overdriven tone of the famous Fender amplifiers of old which have become the stuff of legend, thanks to the unique tone these amps produce and to the countless players that have used this tone to create their signature sound, there's no doubt in my mind that the Tweed sound has help shape music history. Think of tones by Neil Young, Pete Townsend, Joe Walsh, Keith Richards, Billy Gibbons, Joe Bonamassa, and more.



Board Dimensions (W x H) 2.10" x 1.78"

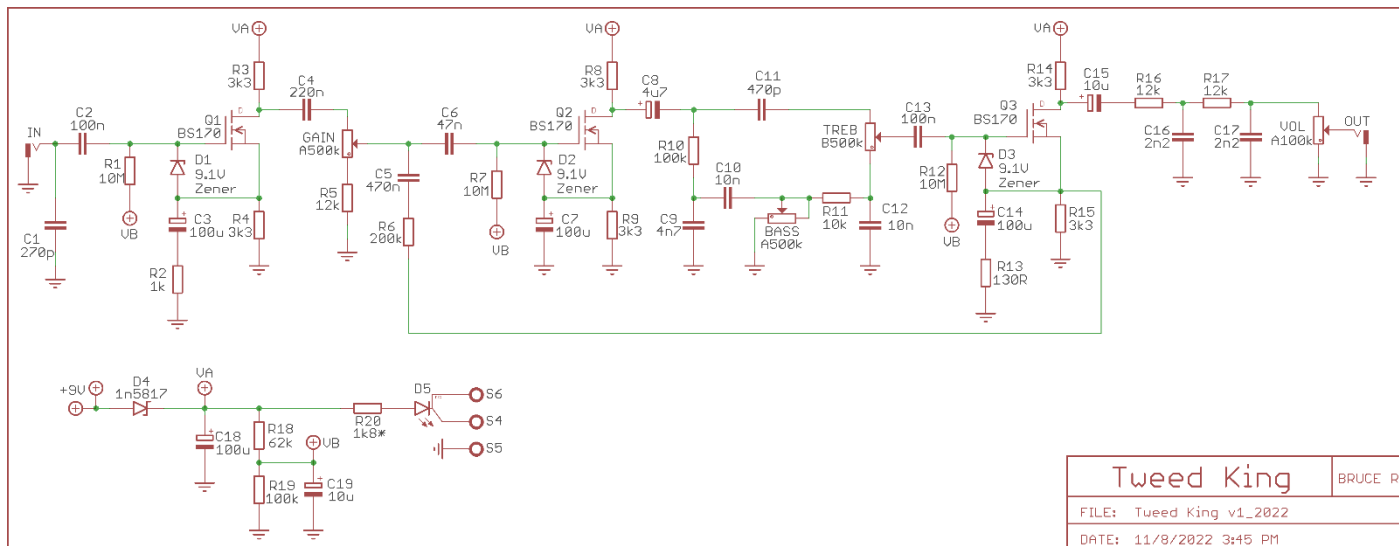
Part	Value
R1	10M
R2	1k
R3	3k3
R4	3k3
R5	12k
R6	200k
R7	10M
R8	3k3
R9	3k3
R10	100k
R11	10k
R12	10M
R13	130R
R14	3k3

Part	Value
R15	3k3
R16	12k
R17	12k
R18	62k
R19	100k
R20	1k8 *CLR
C1	270p
C2	100n
C3	100u
C4	220n
C5	470n
C6	47n
C7	100u

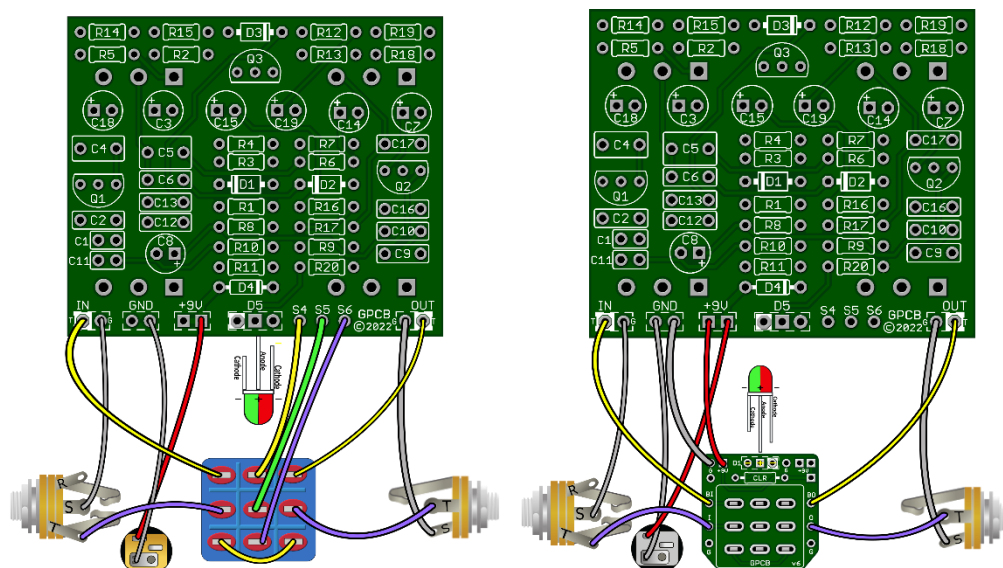
Part	Value
C8	4u7
C9	4n7
C10	10n
C11	470p
C12	10n
C13	100n
C14	100u
C15	10u
C16	2n2
C17	2n2
C18	100u
C19	10u

Part	Value
D1	Zener 9.1v
D2	Zener 9.1v
D3	Zener 9.1v
D4	1n5817
D5	Status LED
Q1	BS170
Q2	BS170
Q3	BS170
BASS	A500k
GAIN	A500k
TREB	B500k
VOL	A100k

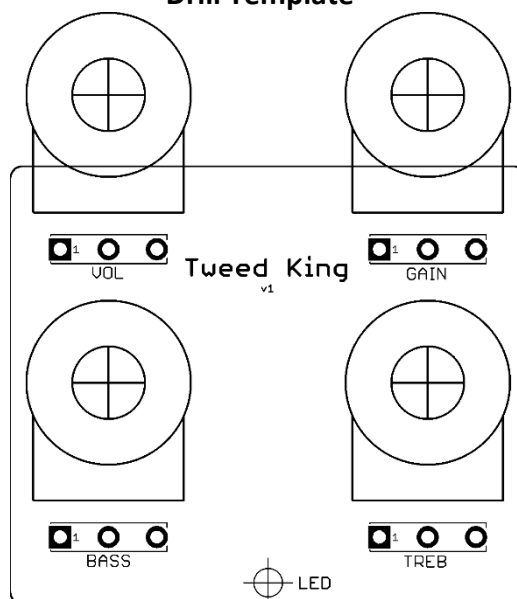
Notes:



Wiring Diagram



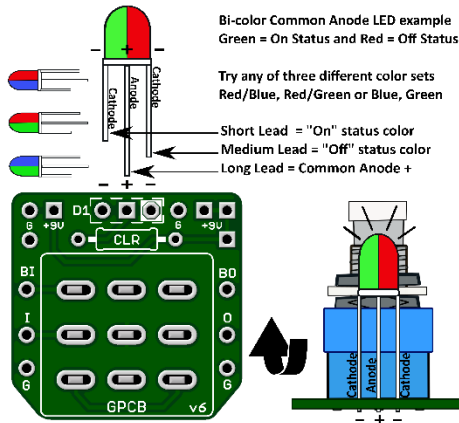
Drill Template



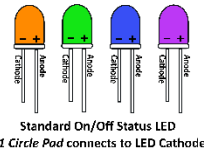
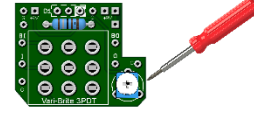
Drill Tips: Measure your components before selecting a drill bit. We recommend drilling the pot holes, mounting the pots in the enclosure, and then soldering the pots to the board. You may want to consider drilling the holes slightly larger than the pot thread.



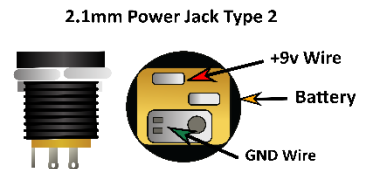
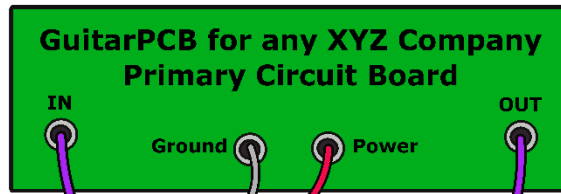
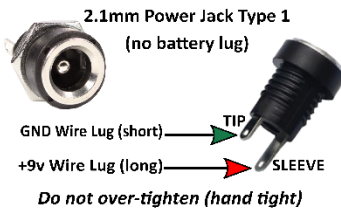
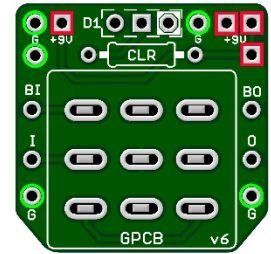
GuitarPCB Tip Sheet



Try our 3PDT Vari-Bright version w/ on-board Trimmer to adjust brightness

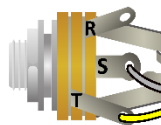


- Green = Ground Pads (5)
- Red = +9v Power Pads (4)
- D1 = LED Pads
- CLR = Current Limiting Resistor
- BI = From Main Board IN
- BO = From Main Board OUT
- I = To Jack Tip IN
- O = To Jack Tip OUT

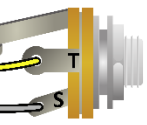


T = Tip
R = Ring
S = Sleeve

Stereo Jack (T-R-S)

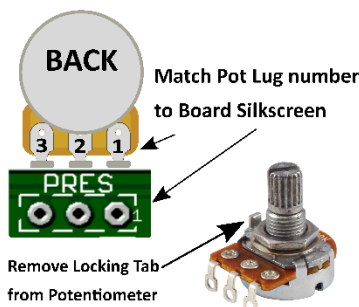


Mono Jack (T-S)

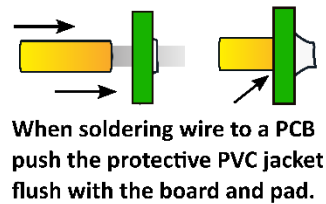
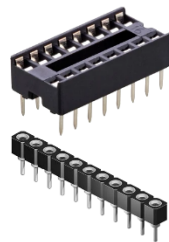


T = Tip
S = Sleeve

Multiple +9v and Ground Pads are convenient hookup points for additional circuits within the same enclosure. This also allows for diverse wiring schemes to suit individual needs.



Sockets make troubleshooting easier

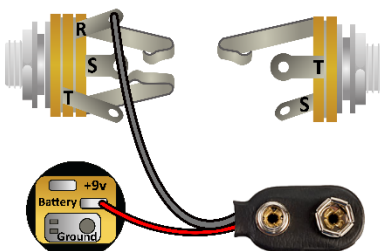


Main Board IN/OUT Pads



Extra Ground Pad

Audio Path to 3PDT



Input/Output Jack Wiring

T = Tip | R = Ring | S = Sleeve

A Stereo Jack is only needed if using a Battery. Otherwise use a Mono Jack
Battery Strap RED wire is connected to Power Jack
Battery Strap Black wire is connected to RING (stereo jack)
If wiring an LED to our 3PDT Wiring Board then S4, S5 & S6 are not needed



This Build Document, PCB, Artwork and Schematic image are property of ©GuitarPCB.com
All copyrights, trademarks and artworks remain the property of their owners.
Any company or product names used are for identification and educational purposes only.
GuitarPCB is in no way affiliated with any said companies and are not to be misrepresented.