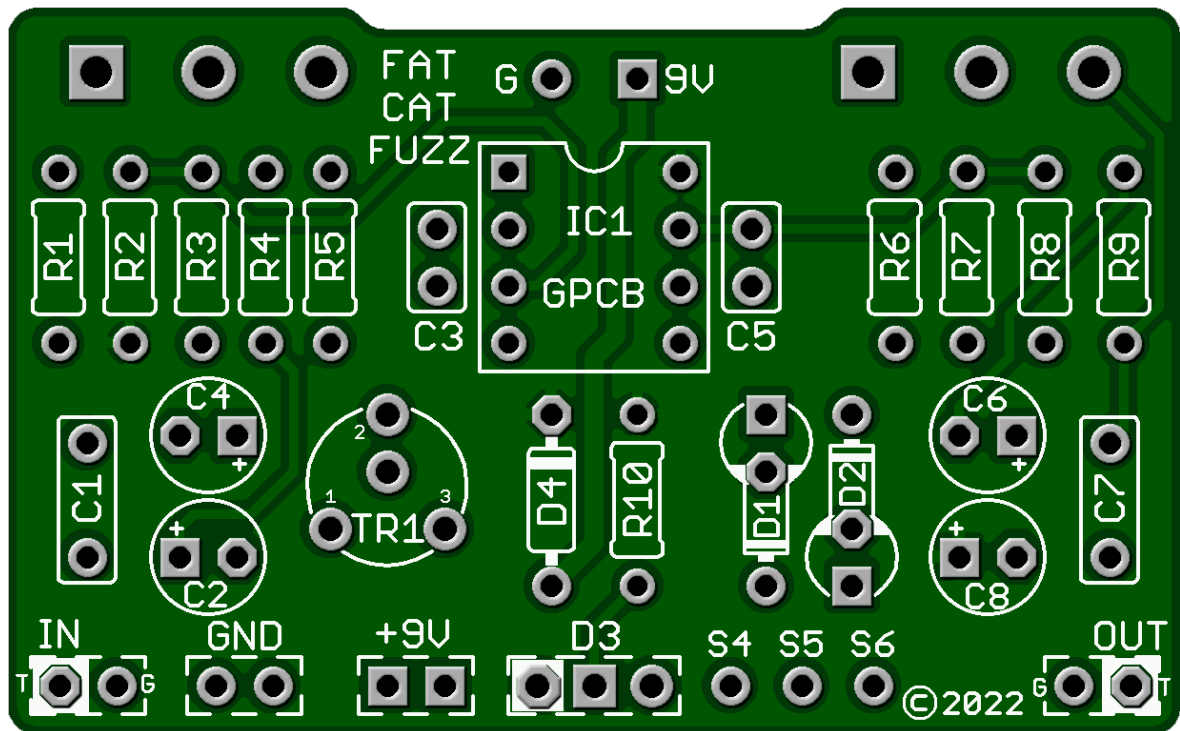


Fat Cat Fuzz

It is a more modern and civilized tone than the Classic Fuzz Face circuit, and has found a niche with those who want an alternative but not too radically different sound. This PCB is designed to make your Fuzz tone Fat & Smooth. No transistors. All the Fuzz is coming from passive diodes resulting in smooth compression and harmonic overtones providing a smooth and transparent transition from clean to overloaded states.



Board Dimensions (W x H) 2.05" x 1.27"

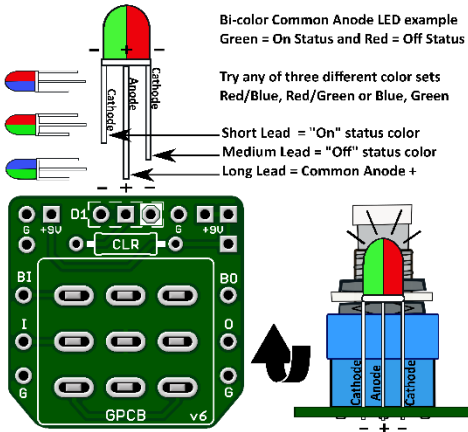
R1	1M	C1	100n	IC1	TL072
R2	1M	C2	2u2		
R3	1M	C3	560p	D1 D2	1N4148
R4	2k2	C4	2u2	D3	Status LED
R5	100k	C5	560p	D4	1N5817
R6	100R	C6	2u2	TR1	100k* Trim
R7	100k	C7	3n3		
R8	10k	C8	47u		
R9	1k5			Fuzz	C10K
R10	1k5			Volume	A100K

Notes:

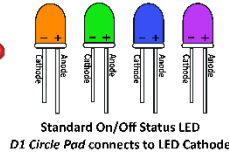
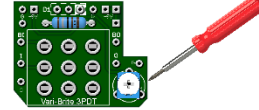
- TR1 (sensitivity control) can be made into a pedal-mounted potentiometer by matching pot lugs with the board silkscreen numbering.
- D1 / D2 – Feel free to try other diodes here. LEDs also sound great.



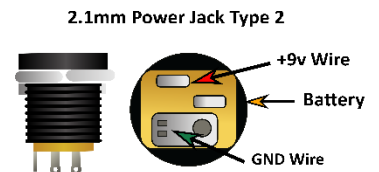
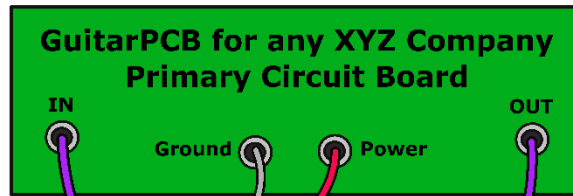
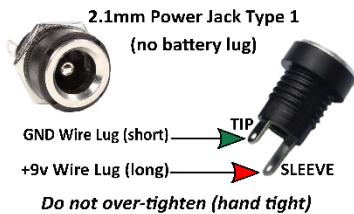
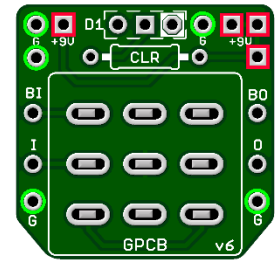
GuitarPCB Tip Sheet



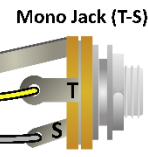
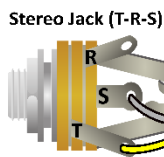
Try our 3PDT Vari-Bright version w/
on-board Trimmer to adjust brightness



- Green = Ground Pads (5)
- Red = + 9v Power Pads (4)
- D1 = LED Pads
- CLR = Current Limiting Resistor
- BI = From Main Board IN
- BO = From Main Board OUT
- I = To Jack Tip IN
- O = To Jack Tip OUT

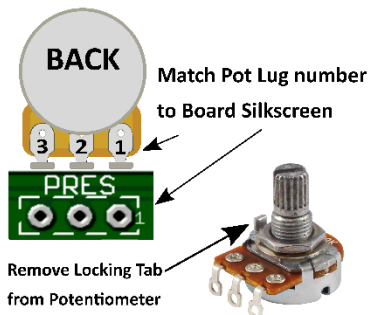


T = Tip
R = Ring
S = Sleeve

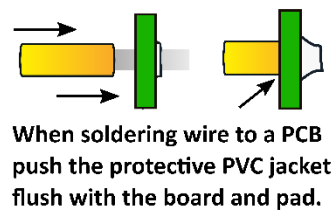
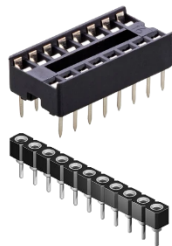


T = Tip
S = Sleeve

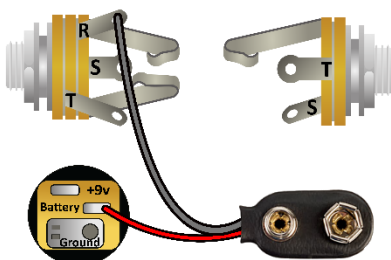
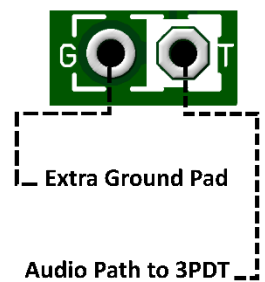
Multiple +9v and Ground Pads are convenient hookup points for additional circuits within the same enclosure. This also allows for diverse wiring schemes to suit individual needs.



Sockets make troubleshooting easier



Main Board IN/OUT Pads



Input/Output Jack Wiring

T = Tip | R = Ring | S = Sleeve

A Stereo Jack is only needed if using a Battery. Otherwise use a Mono Jack
Battery Strap RED wire is connected to Power Jack
Battery Strap Black wire is connected to RING (stereo jack)
If wiring an LED to our 3PDT Wiring Board then S4, S5 & S6 are not needed



This Build Document, PCB, Artwork and Schematic image are property of ©GuitarPCB.com
All copyrights, trademarks and artworks remain the property of their owners.
Any company or product names used are for identification and educational purposes only.
GuitarPCB is in no way affiliated with any said companies and are not to be misrepresented.