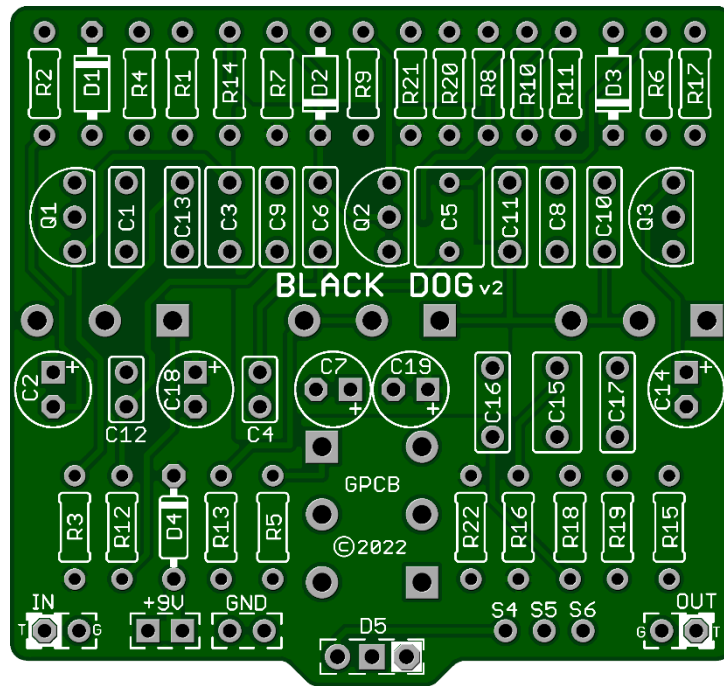


Black Dog v2 2022

The Black Dog is a pure amp overdrive that offers some authentic Zeppelin style tones that will satisfy your desires. It will provide the right amount of gain to lift your overall sound to the next level, but it also has a great passive three band equalizer to further sculpt your tone in the name of Page.

Jimmy did not use distortion to mask his playing. He was all about tone. This circuit is an all Mosfet Stage circuit designed to emulate that sound based on their later albums. Clean, powerful and true.



Board Dimensions (W x H) 2.10" x 1.97"

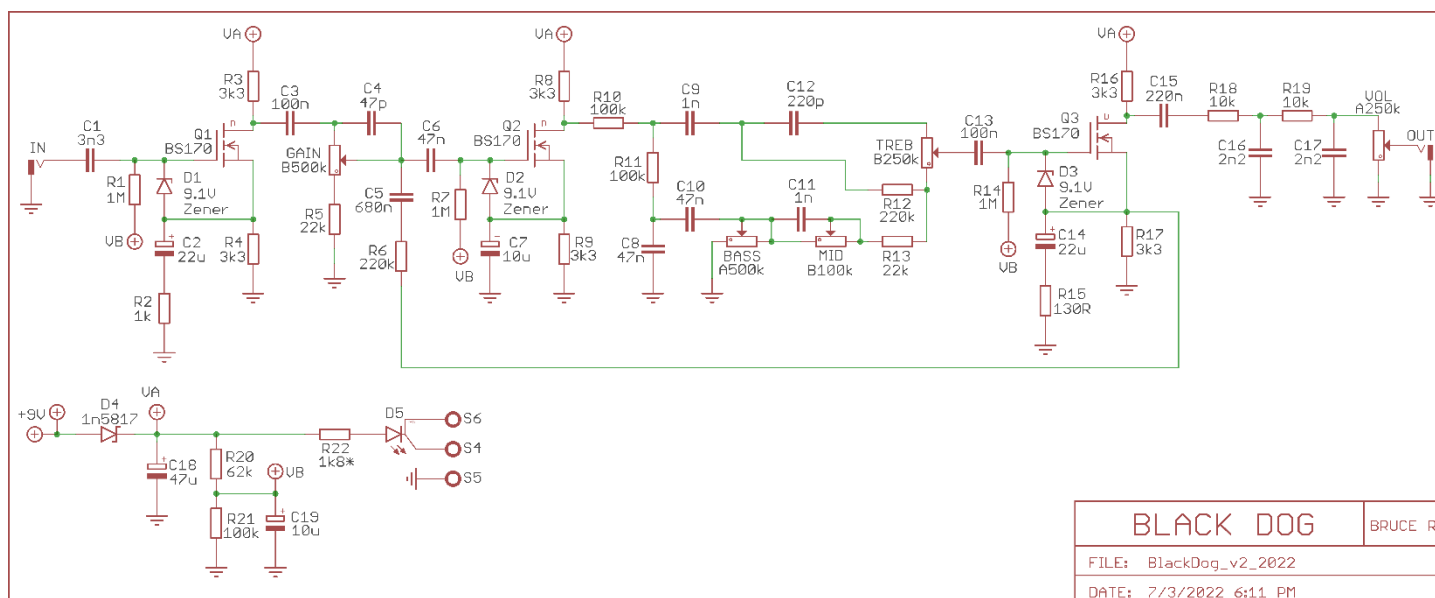
Part	Value	Part	Value	Part	Value	Part	Value
R1	1M	R15	130R	C6	47n	D1	9.1v Zener
R2	1k	R16	3k3	C7	10u	D2	9.1v Zener
R3	3k3	R17	3k3	C8	47n	D3	9.1v Zener
R4	3k3	R18	10k	C9	1n	D4	1n5817
R5	22k	R19	10k	C10	47n	D5	Status LED
R6	220k	R20	62k	C11	1n		
R7	1M	R21	100k	C12	220p	Q1 - Q3	BS170
R8	3k3	R22	1k8	C13	100n		
R9	3k3			C14	22u	VOL	A250k
R10	100k	C1	3n3	C15	220n	GAIN	B500k
R11	100k	C2	22u	C16	2n2	BASS	A500k
R12	220k	C3	100n	C17	2n2	MID	B100k
R13	22k	C4	47p	C18	47u	TREB	B250k
R14	1M	C5	680n	C19	10u		

STATUS LED

D5 is a Status LED that can use either Bi-Color Common Anode or a Standard On/Off LED. R22 is the CLR for the Status LED

New in this GuitarPCB 2022 version release:

- Large off-board wiring pads and additional cosmetic upgrades.
- Incorporated a 1N5817 protection diode



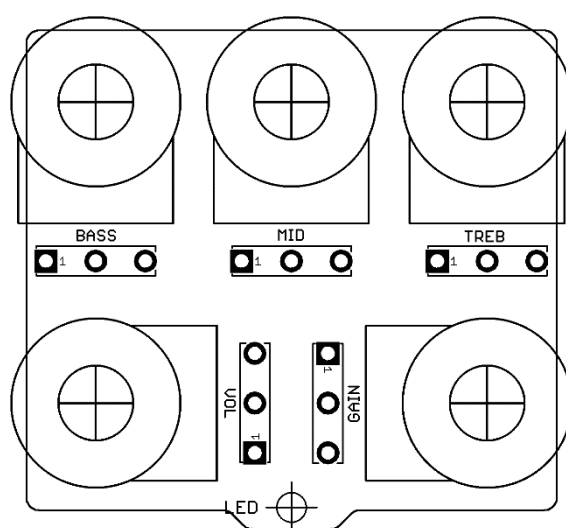
Controls:

Volume: The best setting which is interactive with the Gain Control is just past unity volume - usually around 1:00. Many people find an additional boost or amp gain in tandem is an excellent creative option.

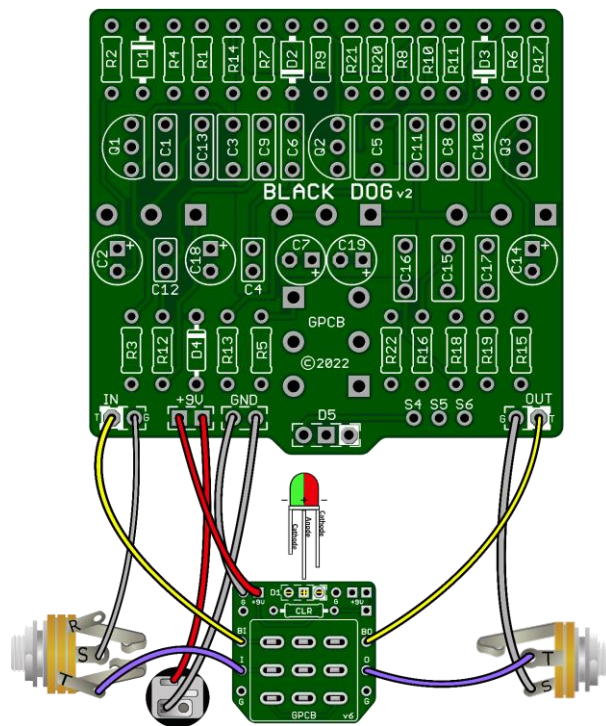
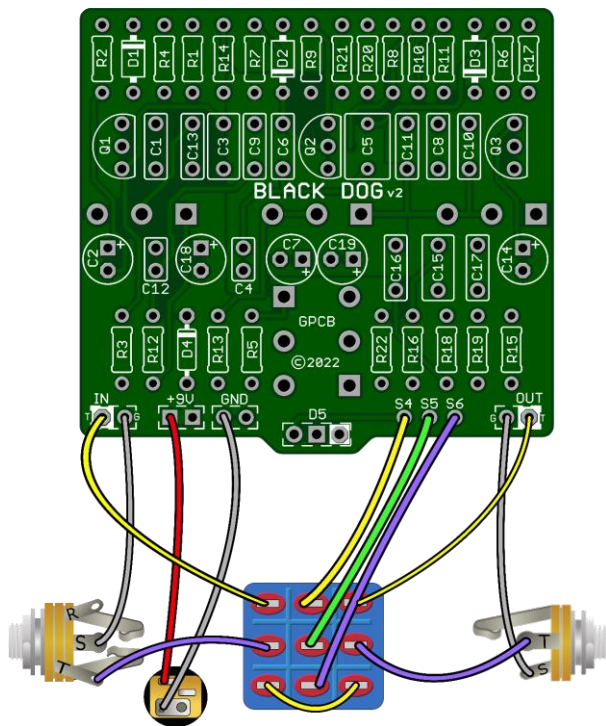
Gain: Best setting is from 3:00 to max for the best Zep-like response. But for a cleaner response you may want to try lower gain settings. Jimmy Page did not rely on distortion to cover his playing! All tone.

Tone Controls: The three bands of the tone section of the Black Dog function just like many power amp tone controls. They are passive instead of active. Therefore, they do not increase the signal in their respective band but rather they decrease the signal. A change in one band will have an effect on the adjacent band. We suggest that you start with all three tone controls at the mid-point and adjust from there. You are sure to find a tonal setting that is just what you want!

Profile: Bass, Mid, and Treble on top. Volume and Gain underneath.
Please note you may always choose to “hand wire” your potentiometers as well.

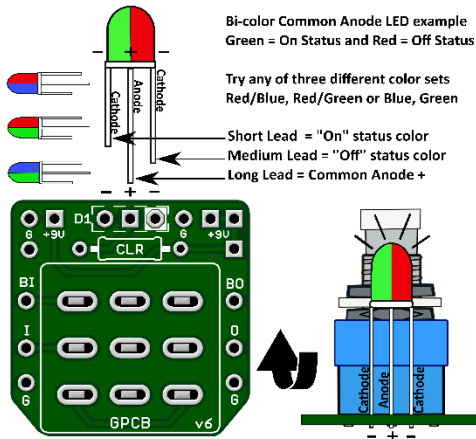


Drill Tips: Measure your components before selecting a drill bit. We recommend drilling the pot holes, mounting the pots in the enclosure, and then soldering the pots to the board. This approach should resolve the issue of the pots not fitting through the holes after soldering. We also recommend you make the holes for the pots a little larger than the threads in case you decide to remove the board and put it back in during the build, to avoid problems. Use this guide at your own risk. Make sure page scaling is turned off when you print this PDF, or the image above may be smaller than expected. Verify everything before drilling.

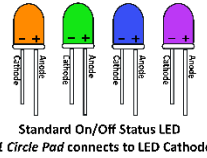
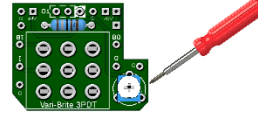




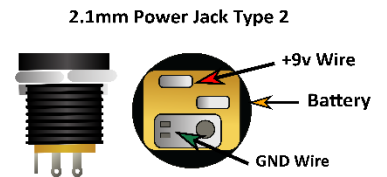
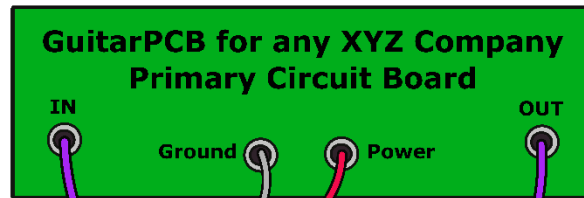
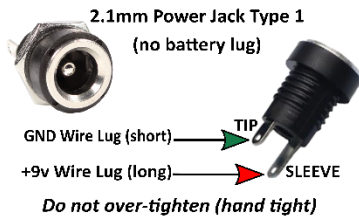
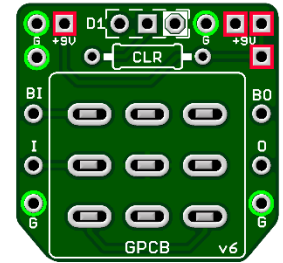
GuitarPCB Tip Sheet



Try our 3PDT Vari-Bright version w/
on-board Trimmer to adjust brightness

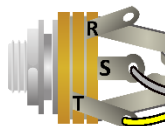


- Green = Ground Pads (5)
- Red = +9v Power Pads (4)
- D1 = LED Pads
- CLR = Current Limiting Resistor
- BI = From Main Board IN
- BO = From Main Board OUT
- I = To Jack Tip IN
- O = To Jack Tip OUT

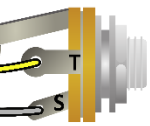


T = Tip
R = Ring
S = Sleeve

Stereo Jack (T-R-S)

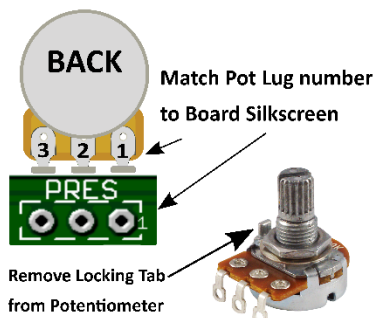


Mono Jack (T-S)

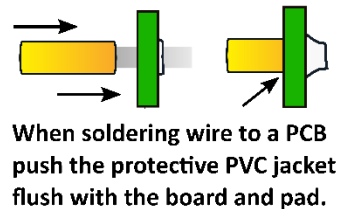
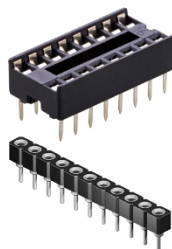


T = Tip
S = Sleeve

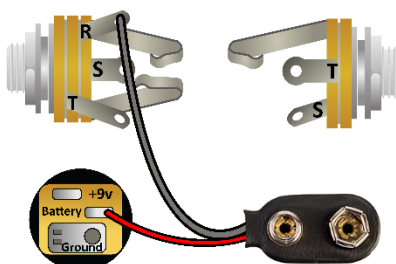
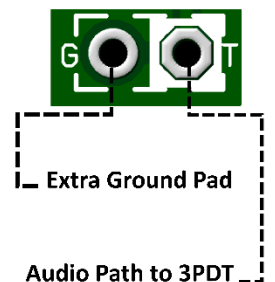
Multiple +9v and Ground Pads are convenient hookup points for additional circuits within the same enclosure. This also allows for diverse wiring schemes to suit individual needs.



Sockets make troubleshooting easier



Main Board IN/OUT Pads



Input/Output Jack Wiring

T = Tip | R = Ring | S = Sleeve

A Stereo Jack is only needed if using a Battery. Otherwise use a Mono Jack
Battery Strap RED wire is connected to Power Jack
Battery Strap Black wire is connected to RING (stereo jack)
If wiring an LED to our 3PDT Wiring Board then S4, S5 & S6 are not needed



This Build Document, PCB, Artwork and Schematic image are property of @GuitarPCB.com
All copyrights, trademarks and artworks remain the property of their owners.
Any company or product names used are for identification and educational purposes only.
GuitarPCB is in no way affiliated with any said companies and are not to be misrepresented.