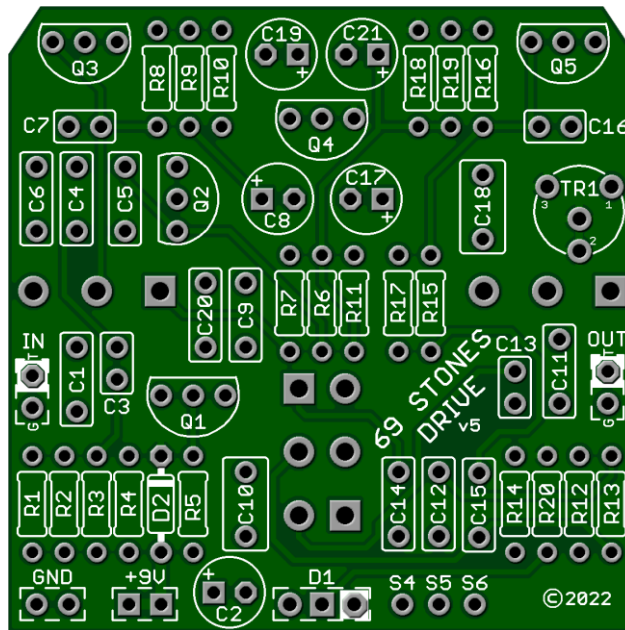


# 69 Stones Drive v5 2022

By their Satanic Majesties Request we present the 69 Stones Drive which can turn any clean amp into an Open G monster. The perfect amount of Medium Gain Drive with full Treble and Bass Control will have you standing out in the mix chugging away at your favorite riffs. This circuit is based on tones from the time period between 1969 to 72.

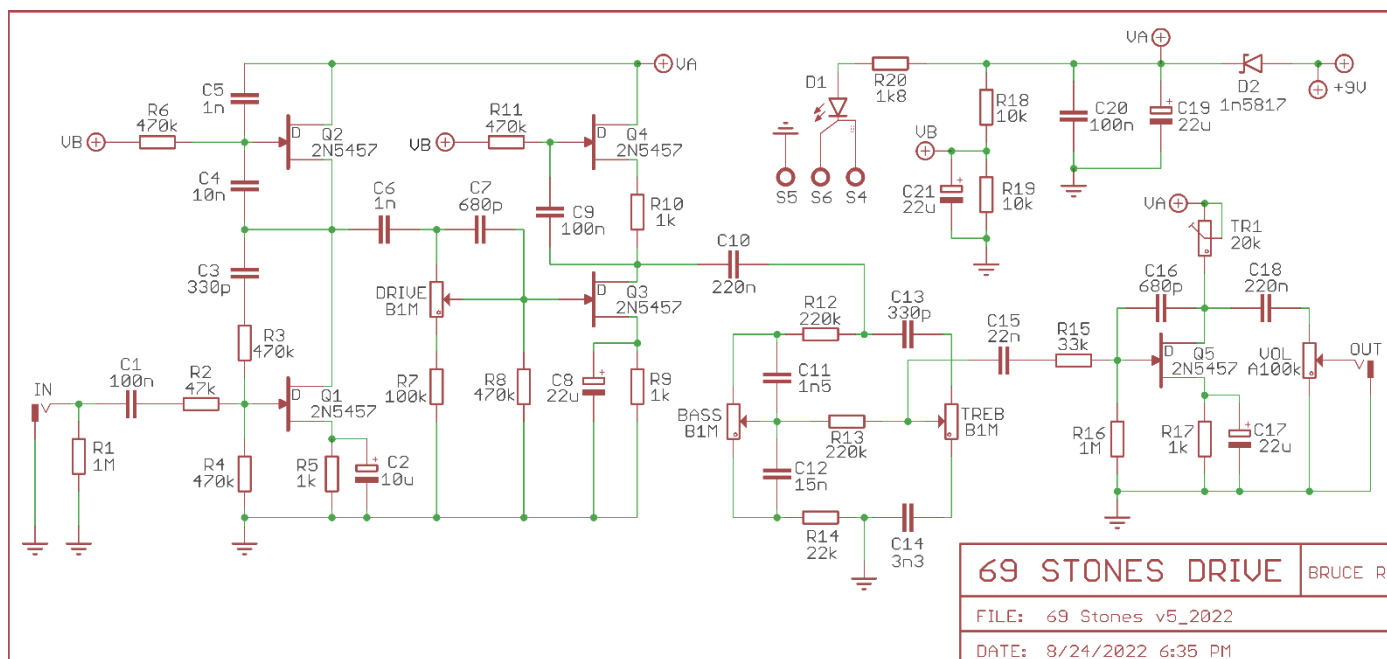


Part	Value	Part	Value	Part	Value	Part	Value
R1	1M	R14	22k	C1	100n	C14	3n3
R2	47k	R15	33k	C2	10uF	C15	22n
R3	470k	R16	1M	C3	330p	C16	680p
R4	470k	R17	1k	C4	10n	C17	22uF
R5	1k	R18	10k	C5	1n	C18	100n
R6	470k	R19	10k	C6	1n	C19	22uF
R7	100k	R20	1k8	C7	680p	C20	100n
R8	470k	TR1	10k	C8	22uF	C21	22uF
R9	1k			C9	100n		
R10	1k	TREB	B1M	C10	100n	D1	Status LED
R11	470k	VOL	A100k	C11	1n5	D2	1N5817
R12	220k	*DRIVE	B1M	C12	15n	Q1 - Q4	J113
R13	220k	BASS	B1M	C13	330p	Q5	J113

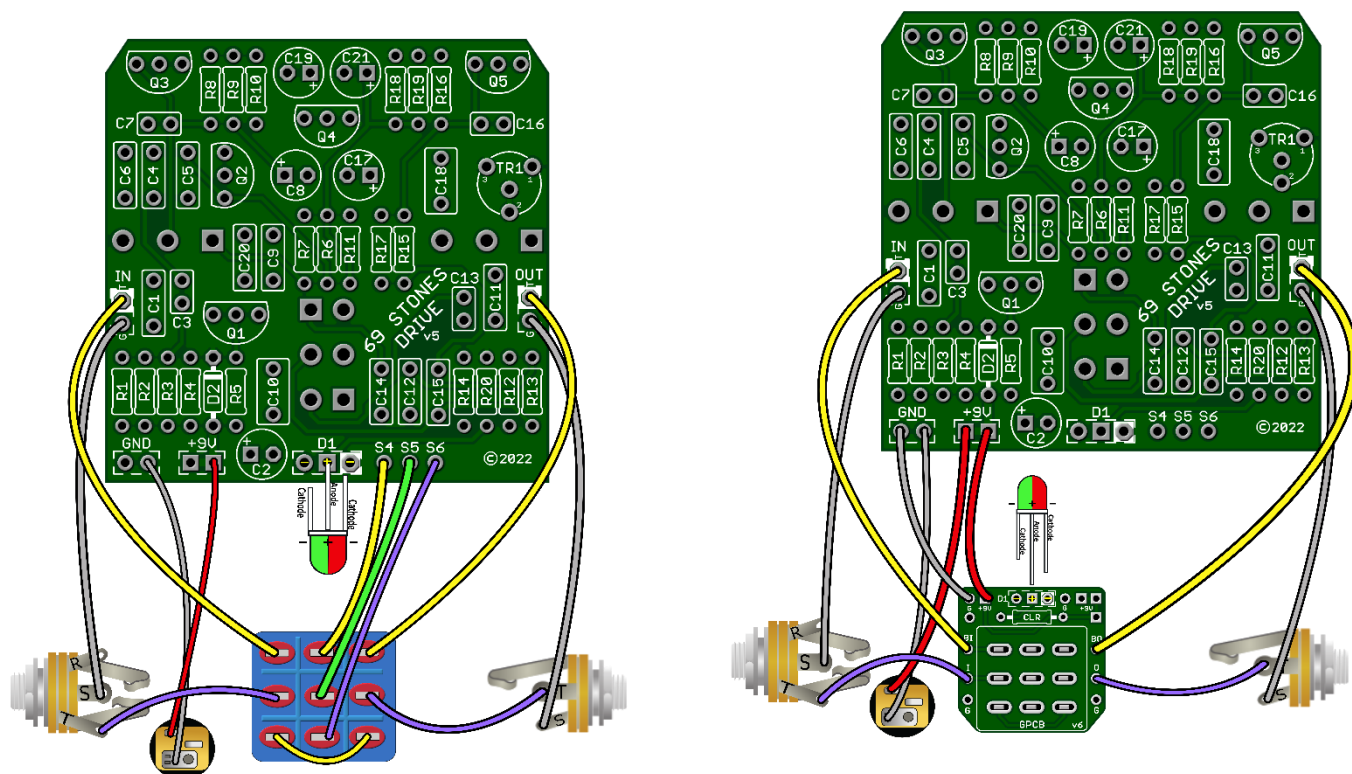
## Build Notes:

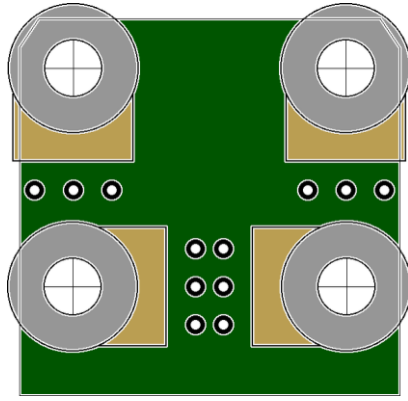
**New in v5:** The circuit protection diode D2 has been changed to a 1N5817. This required us to move only a few parts in comparison to the previous version. (Namely C14 and D2) Nothing else has changed.

**Biasing TR1:** When biasing the Drain voltage, it should be roughly 4.5v to 6v.



## WIRING

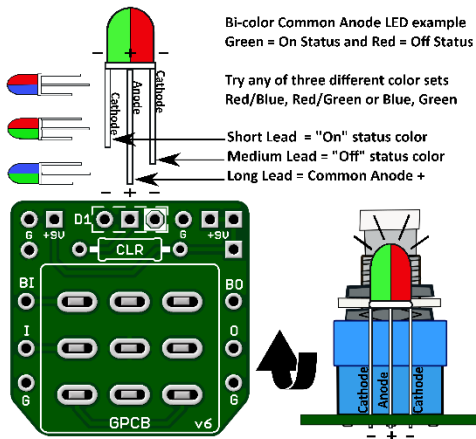




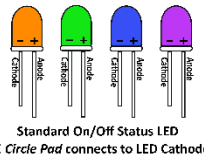
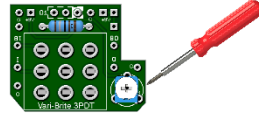
Drilling Template: Make sure it prints out to size with your board.  
Drill at your own risk. We suggest enclosure mounting before soldering in potentiometers.



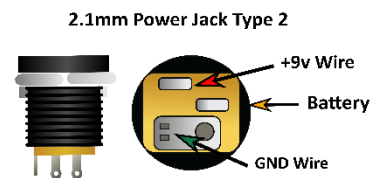
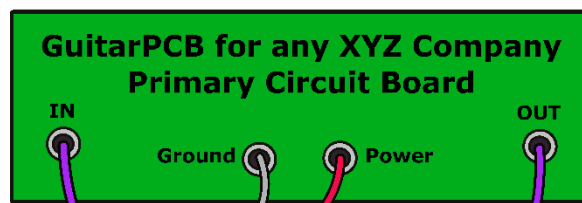
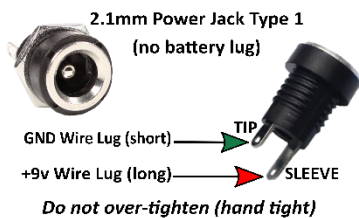
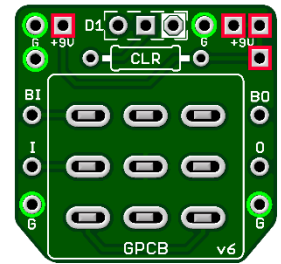
# GuitarPCB Tip Sheet



Try our 3PDT Vari-Bright version w/  
on-board Trimmer to adjust brightness

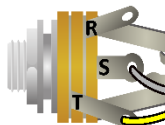


- Green = Ground Pads (5)
- Red = +9v Power Pads (4)
- D1 = LED Pads
- CLR = Current Limiting Resistor
- BI = From Main Board IN
- BO = From Main Board OUT
- I = To Jack Tip IN
- O = To Jack Tip OUT

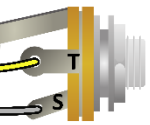


T = Tip  
R = Ring  
S = Sleeve

Stereo Jack (T-R-S)

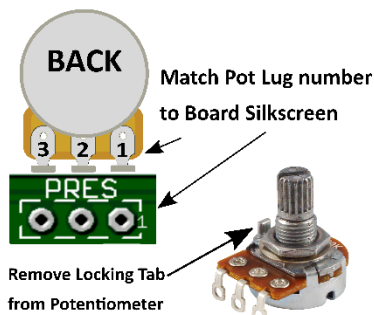


Mono Jack (T-S)

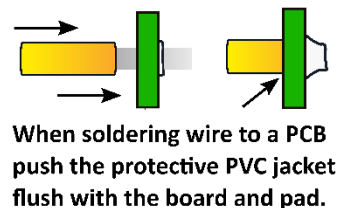
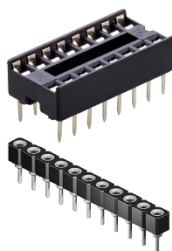


T = Tip  
S = Sleeve

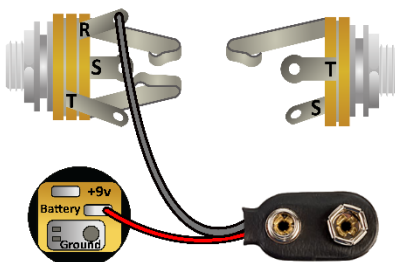
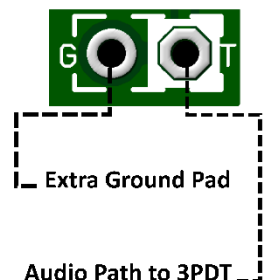
Multiple +9v and Ground Pads are convenient hookup points for additional circuits within the same enclosure. This also allows for diverse wiring schemes to suit individual needs.



Sockets make troubleshooting easier



Main Board IN/OUT Pads



## Input/Output Jack Wiring

T = Tip | R = Ring | S = Sleeve

A Stereo Jack is only needed if using a Battery. Otherwise use a Mono Jack  
Battery Strap RED wire is connected to Power Jack  
Battery Strap Black wire is connected to RING (stereo jack)  
If wiring an LED to our 3PDT Wiring Board then S4, S5 & S6 are not needed



This Build Document, PCB, Artwork and Schematic image are property of ©GuitarPCB.com  
All copyrights, trademarks and artworks remain the property of their owners.  
Any company or product names used are for identification and educational purposes only.  
GuitarPCB is in no way affiliated with any said companies and are not to be misrepresented.