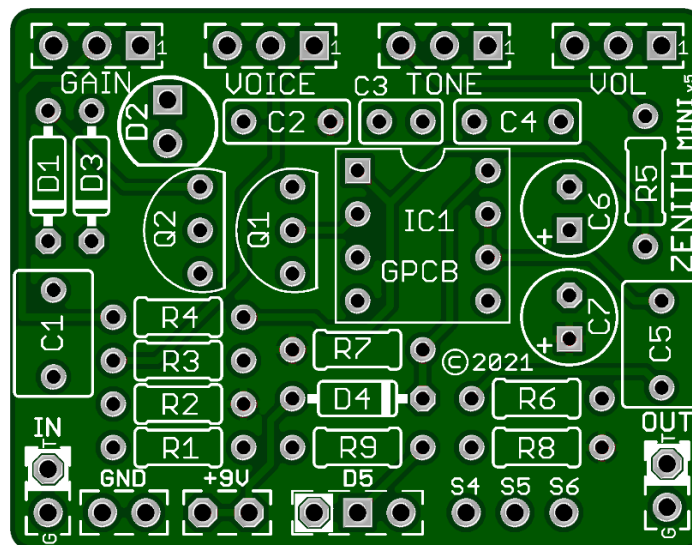


# Zenith Mini v5 2021

*Based on the Zen Drive™ this circuit is a dynamic, touch-sensitive overdrive pedal. Inspired by a legendary Dumble amplifier & guitarist, the **Zenith Mini** will allow you to dial in amazing blues, rock, country and jazz tones. Are you looking for a pedal circuit to produce Dumble style tones? This is it!*

## New v5 2021 Version

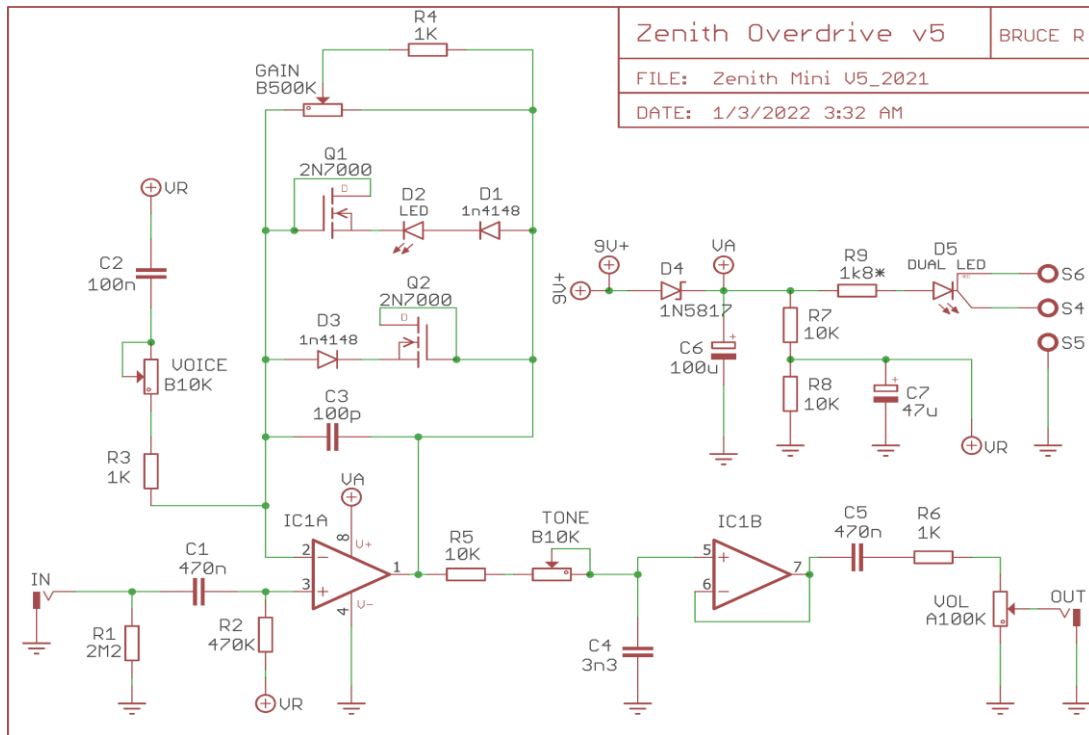


Board Dimensions (W x H) 1.60" x 1.25"

### Bill Of Materials

Part	Value
R1	2M2
R2	470K
R3	1K
R4	1K
R5	10K
R6	1K
R7	10K
R8	10K
R9	3K3
D1	1n4148
D2	LED or jumper
D3	1n4148
D4	1n5817
D5	Status LED

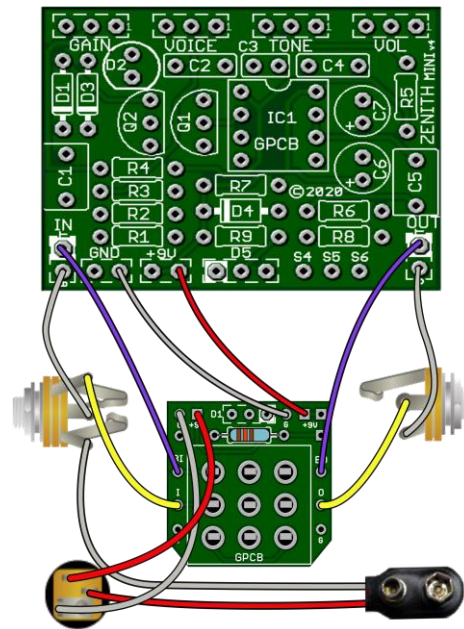
Part	Value
IC1	TL072
Q1	2N7000
Q2	2N7000
C1	470n
C2	100n
C3	100p
C4	3n3
C5	470n
C6	100u
C7	47u
Volume	A100K
Gain	B500K
Tone	B50K
Voice	B10K



### Build Notes:

- The difference between this and previous versions is we use a 1N5817 circuit protection diode as well as updated pads.
- We like using the LED for D2 in this build, but if you like a more stock-sounding pedal, put in the Jumper instead.

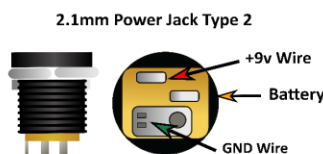
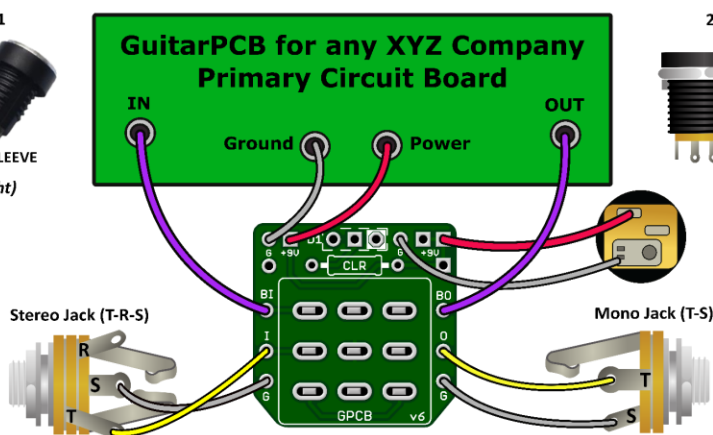
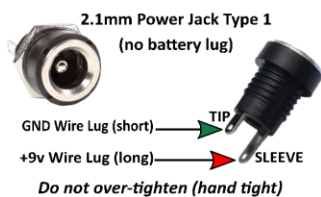
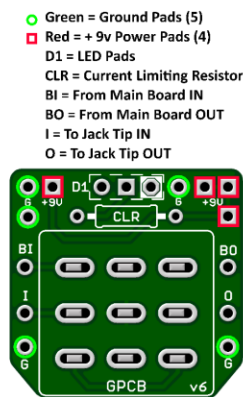
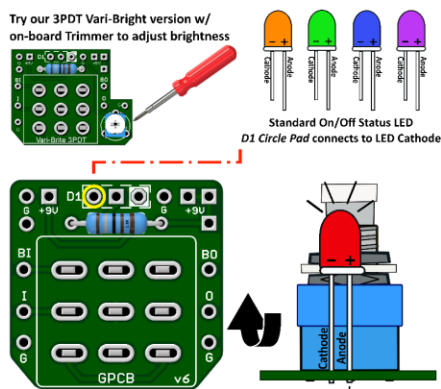
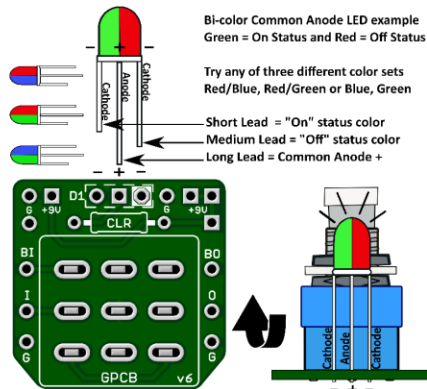
### Wiring Diagram



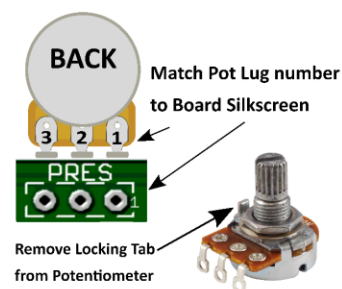
Use the Board Silkscreen for hand wiring potentiometers & switches. (1) in the silkscreen means Potentiometer Lug 1.



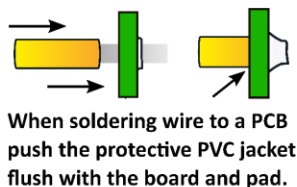
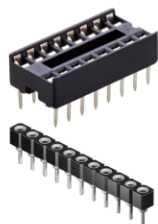
# GuitarPCB Tip Sheet



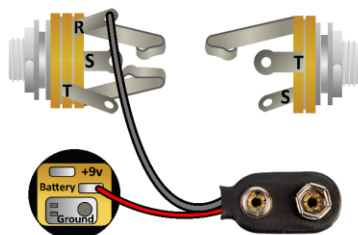
Multiple +9v and Ground Pads are convenient hookup points for additional circuits within the same enclosure. This also allows for diverse wiring schemes to suit individual needs.



Sockets make troubleshooting easier



Main Board IN/OUT Pads



## Input/Output Jack Wiring

T = Tip | R = Ring | S = Sleeve

A Stereo Jack is only needed if using a Battery. Otherwise use a Mono Jack  
Battery Strap RED wire is connected to Power Jack  
Battery Strap Black wire is connected to RING (stereo jack)  
If wiring an LED to our 3PDT Wiring Board then S4, S5 & S6 are not needed



This Build Document, PCB, Artwork and Schematic image are property of ©GuitarPCB.com  
All copyrights, trademarks and artworks remain the property of their owners.  
Any company or product names used are for identification and educational purposes only.  
GuitarPCB is in no way affiliated with any said companies and are not to be misrepresented.