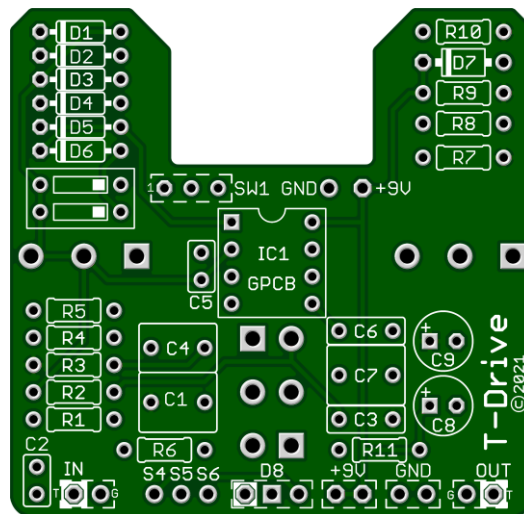


T-Drive 2021

Touted as the King of Transparent Drives your guitar will retain its true character after being processed by this circuit. A fantastic way to Boost your tone or use it in tandem with a dirty amplifier or another Drive pedal. It all sounds great!

*We have incorporated a **Stock / Hot switch** at **SW1** which adds more Gain when using single coil or low output pickups. Additionally, we tweaked the design for a **“proper feel”** when using the tone controls versus the circuit it is based on. This works without changing any components or values used in the original! Now you will hear more Bass or Treble content as you turn the controls clockwise just like most Drives.*

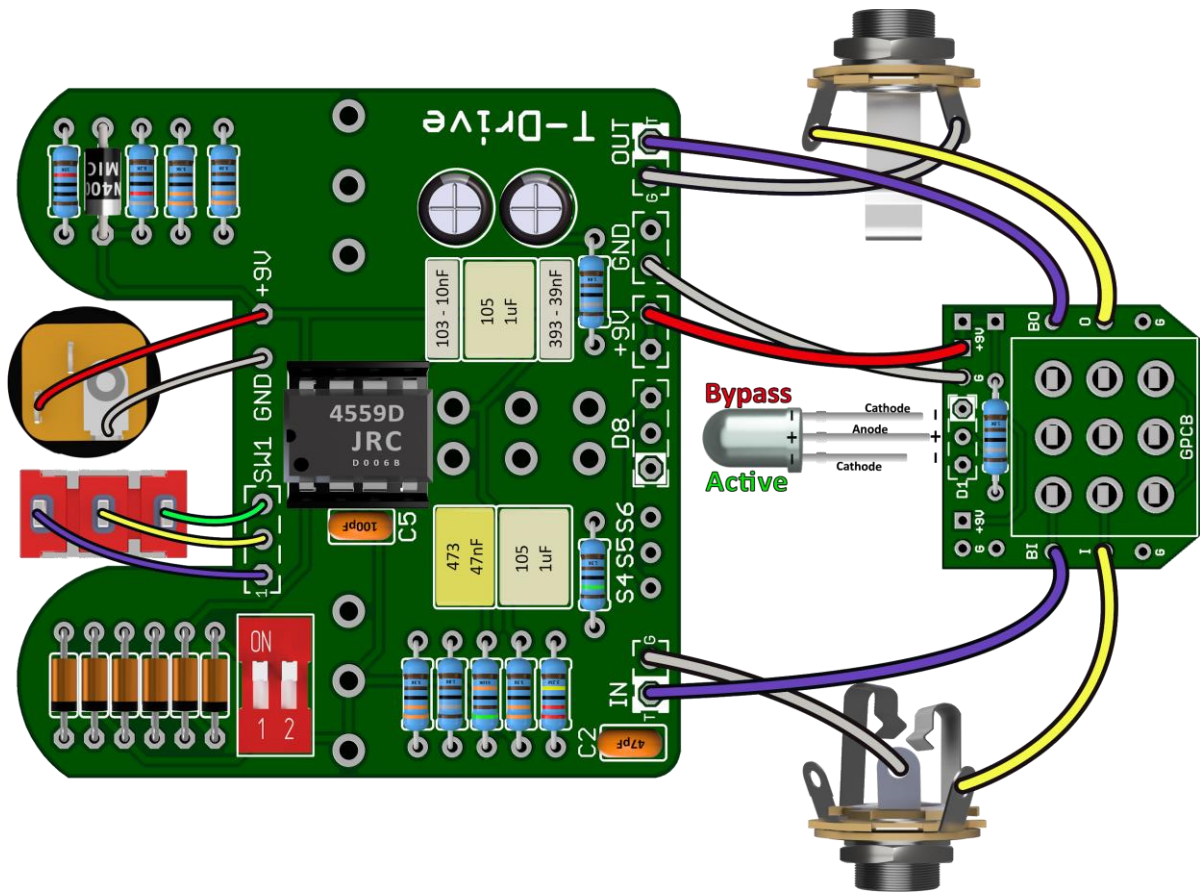


Dimensions: 1.95" x 1.87"

Part	Value
R1	2M2
R2	3k3
R3	510k
R4	1k8
R5	3k3
R6	1k5
R7	3k3
R8	3k3
R9	8k2
R10	10K
R11	1k8*

Part	Value
C1	1u
C2	47p
C3	39n
C4	47n
C5	100p
C6	10n
C7	1u_Film
C8	47u
C9	47u
IC1	*TL072

Part	Value
D1 - D6	1n4148
D7	1n4001
D8	Status LED
VOL	A100K
DRIVE	B500k
BASS	B50k
TREB	B50k
SW1	SPDT ON-ON
SW2	2-POLE DIP



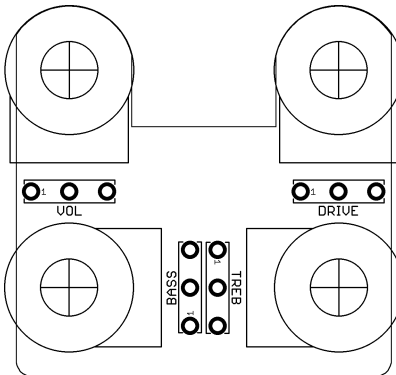
Need a kit?

USA – Check out [PedalPartsAndKits](http://PedalPartsAndKits.com) for all your needs.

Europe – [Das Musikding](http://DasMusikding.com) carries both boards and kits as a service to our Europeans friends.

Australia - PedalPartsAustralia.com carries GuitarPCB Boards and Kits direct.

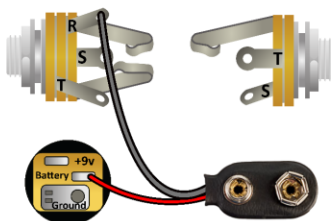
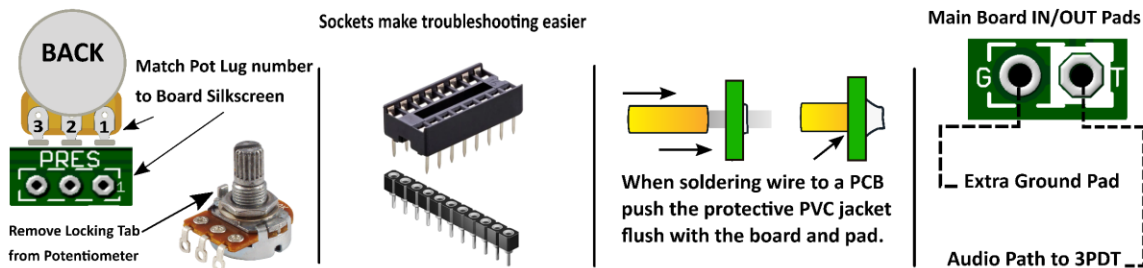
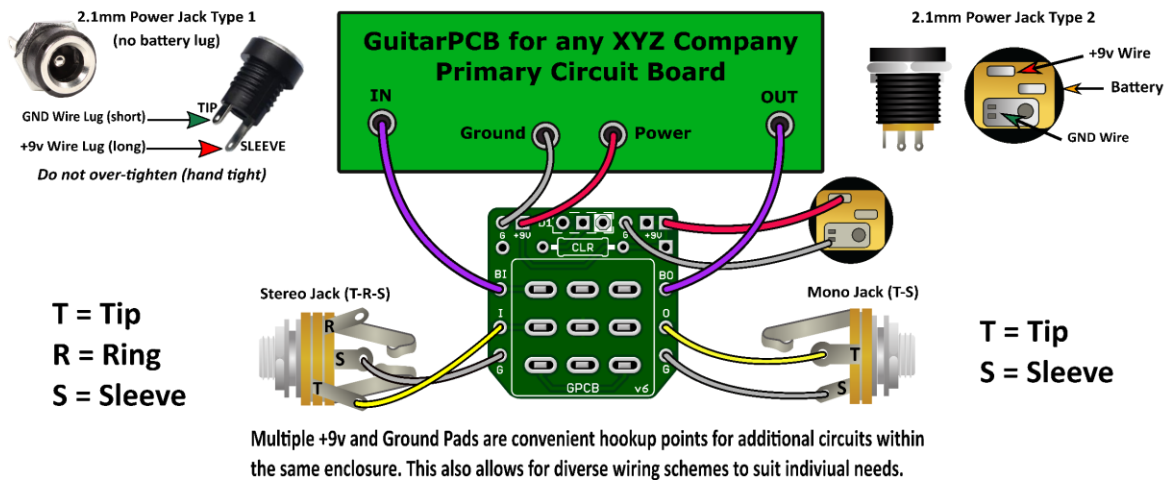
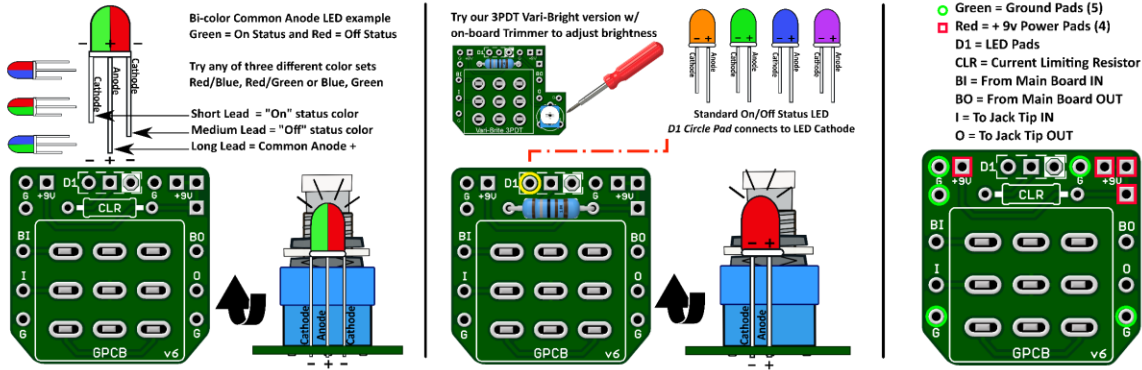
If they do not have a KIT listed send them a note asking if they can help you out.



Drill Tips: Measure your components before selecting a drill bit. We recommend drilling the pot holes, mounting the pots in the enclosure, and then soldering the pots to the board. This approach should resolve the issue of the pots not fitting through the holes after soldering. We also recommend you make the holes for the pots a little larger than the threads in case you decide to remove the board and put it back in during the build, to avoid problems. Use this guide at your own risk. Make sure page scaling is turned off when you print this PDF, or the image above may be smaller than expected. Verify everything before drilling.



GuitarPCB Tip Sheet



Input/Output Jack Wiring T = Tip | R = Ring | S = Sleeve

A Stereo Jack is only needed if using a Battery. Otherwise use a Mono Jack
Battery Strap RED wire is connected to Power Jack
Battery Strap Black wire is connected to RING (stereo jack)
If wiring an LED to our 3PDT Wiring Board then S4, S5 & S6 are not needed



This Build Document, PCB, Artwork and Schematic image are property of ©GuitarPCB.com
All copyrights, trademarks and artworks remain the property of their owners.
Any company or product names used are for identification and educational purposes only.
GuitarPCB is in no way affiliated with any said companies and are not to be misrepresented.