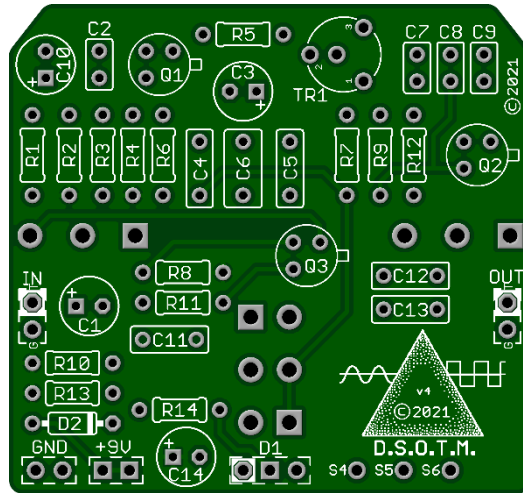


DSOTM FUZZ v4 2021



This circuit provides a smooth and sustaining Fuzz tone comparable to Pink Floyd's 1973 Dark Side of the Moon album. This includes amazing rolled off cleans as well as searing solos with just the twist of your guitar volume. A powerful set of tone controls brings it all together. It is no wonder this considered a "Holy Grail" tone.

Part	Value
R1	1M
R2	470K
R3	100K
R4	10K
R5	100R
R6	820R
R7	100R
R8	56K
R9	100K
R10	2K7

Part	Value
R11	10K
R12	56K
R13	100R
R14	1K8
C1	10u
C2	100p
C3	22u
C4	5n6
C5	4n7

Part	Value
C6	220n
C7	470p
C8	220p
C9	220p
C10	22u
C11	15n
C12	3n3
C13	2n2
C14	100u
TR1	2K

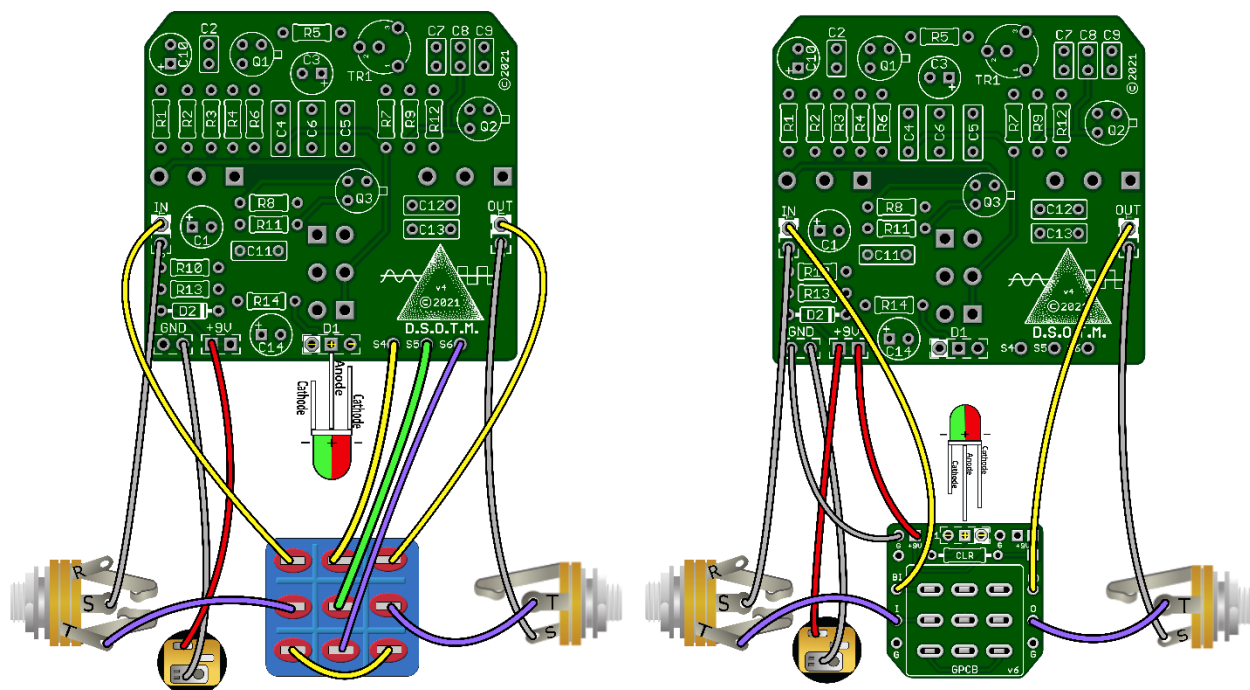
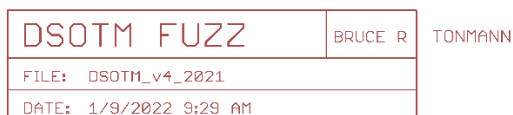
Part	Value
Q1 - Q3	BC109
D1	Status LED
D2	1N5817
VOL	A100K
FUZZ	C1K
BODY	A100K
BRITE	B100K

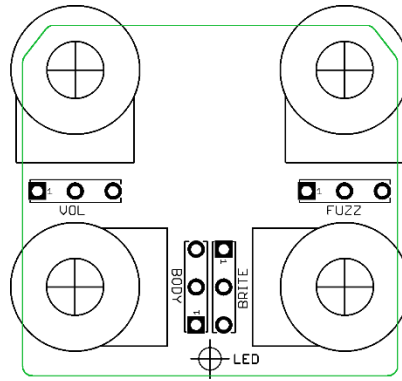
STATUS LED

*D1 is a Status LED that can be either a Bi-Color Common Anode or a Standard On/Off LED. (See Tip Sheet)

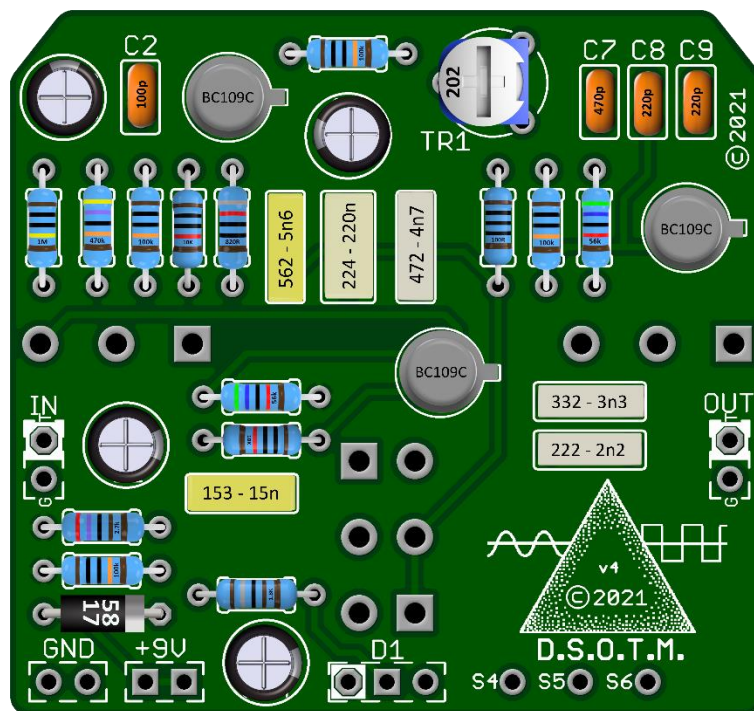
New in this GuitarPCB 2021 version release:

- Added 1N5817 circuit protection diode which is superior.
- Larger off-board wiring pads.
- Added extra +9v and Ground pads for "Combo Builds" allowing for easy wiring options.





Drill Tips: Measure your components before selecting a drill bit. We recommend drilling the pot holes, mounting the pots in the enclosure, and then soldering the pots to the board. This approach should resolve the issue of the pots not fitting through the holes after soldering. We also recommend you make the holes for the pots a little larger than the threads in case you decide to remove the board and put it back in during the build, to avoid problems. Use this guide at your own risk. Make sure page scaling is turned off when you print this PDF, or the image above may be smaller than expected. Verify everything before drilling.



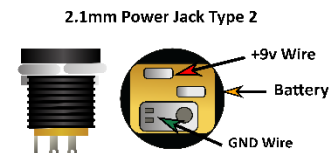
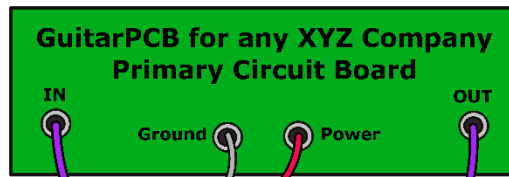
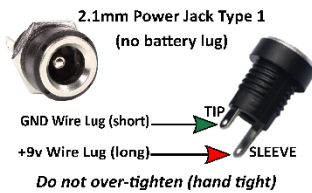
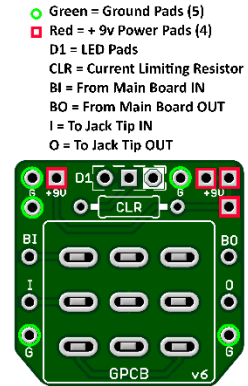
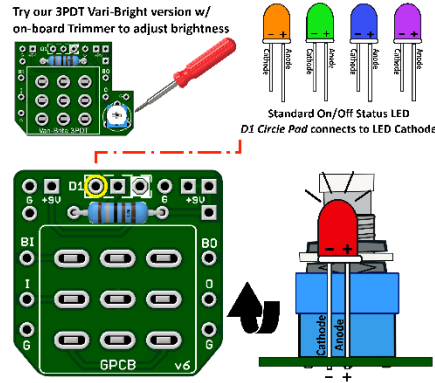
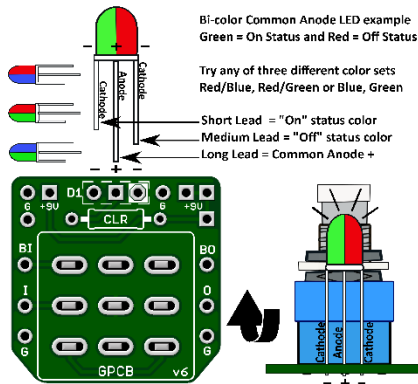
[Soldering Tutorial on Youtube](#)

Need a kit? Check out our authorized worldwide distributors:

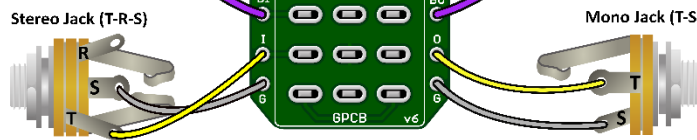
- USA – Check out [PedalPartsAndKits](#) for all your GuitarPCB kit needs in the USA.
- Europe – [Das Musikding](#) Order either boards or kits direct from Europe.
- [PedalPartsAustralia](#) - Order either boards or kits direct from Australia



GuitarPCB Tip Sheet

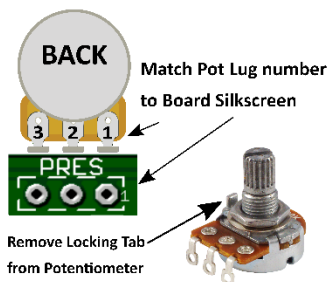


T = Tip
R = Ring
S = Sleeve

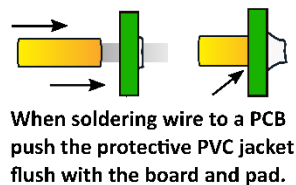
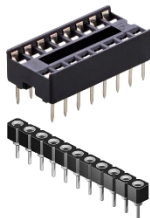


T = Tip
S = Sleeve

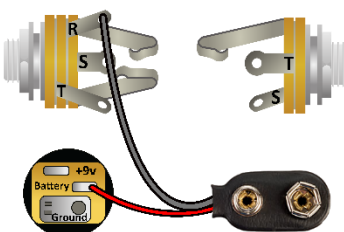
Multiple +9v and Ground Pads are convenient hookup points for additional circuits within the same enclosure. This also allows for diverse wiring schemes to suit individual needs.



Sockets make troubleshooting easier



Main Board IN/OUT Pads



Input/Output Jack Wiring

T = Tip | R = Ring | S = Sleeve

A Stereo Jack is only needed if using a Battery. Otherwise use a Mono Jack
Battery Strap RED wire is connected to Power Jack
Battery Strap Black wire is connected to RING (stereo jack)
If wiring an LED to our 3PDT Wiring Board then S4, S5 & S6 are not needed



This Build Document, PCB, Artwork and Schematic image are property of ©GuitarPCB.com
All copyrights, trademarks and artworks remain the property of their owners.
Any company or product names used are for identification and educational purposes only.
GuitarPCB is in no way affiliated with any said companies and are not to be misrepresented.