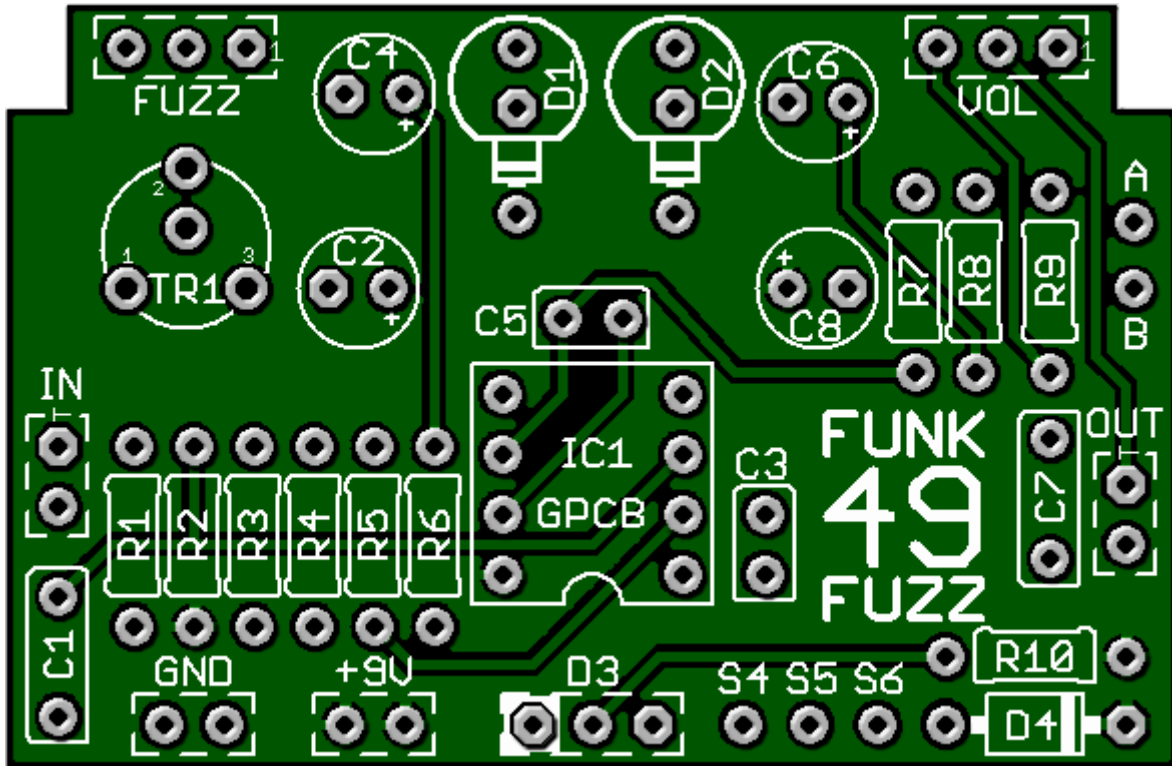


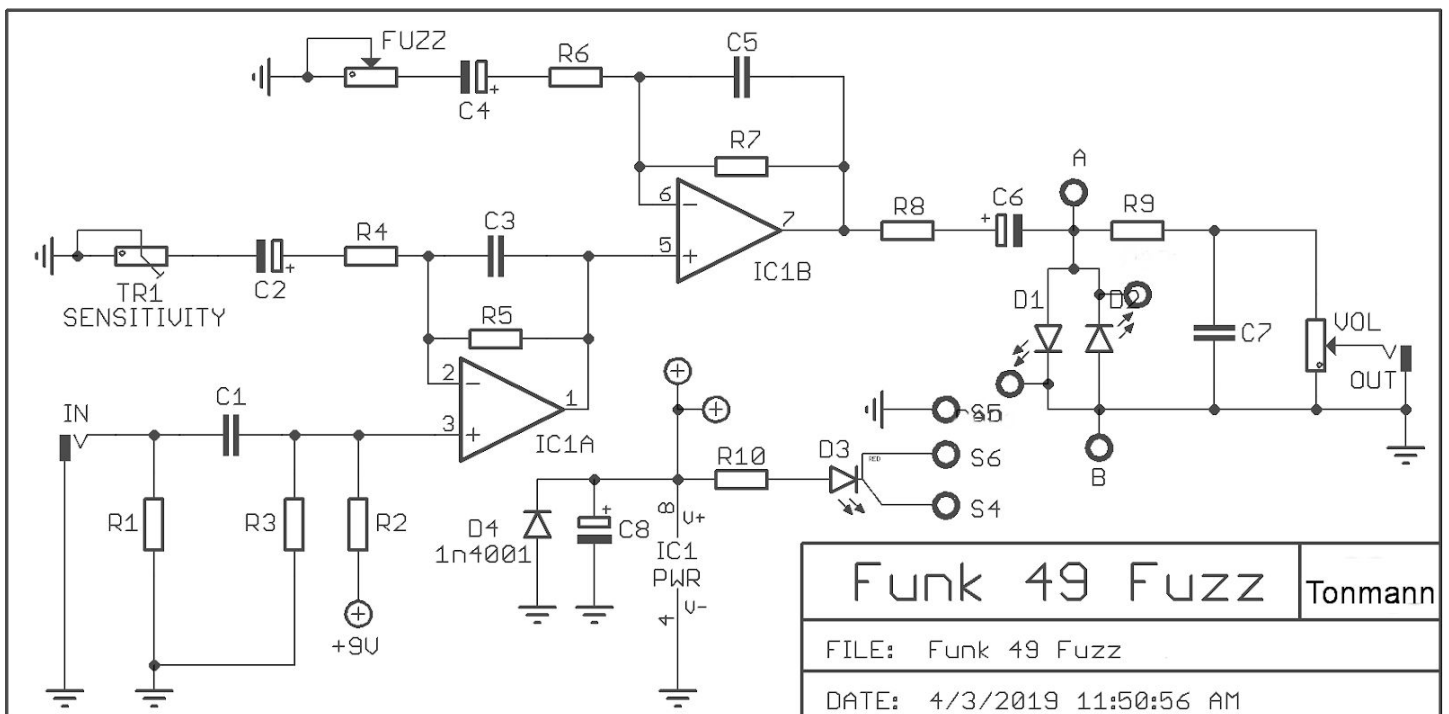
# Funk 49 Fuzz

**A smooth Fuzz/Gain Hybrid designed to get your Classic Joe styles cooking.**

No transistors here. All the great tone is coming from a TL072 Opamp so no biasing required. This circuit includes A/B pads for adding multiple clipping options using one of our DPDT wiring boards and a Trimmer to dial in the perfect amount of Gain for your particular rig & playing style.



Board Dimensions (W x H) 1.95" x 1.27" ca. 49.53mm x 32.39mm

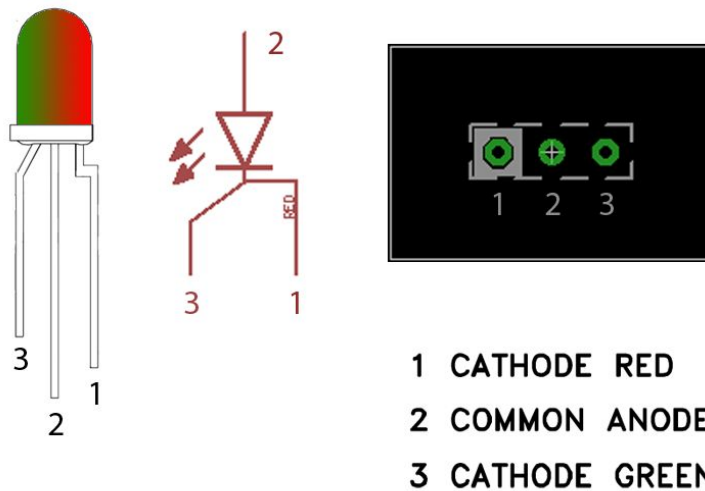


R1	1M	C1	100n	IC1	TL072
R2	1M	C2	2 $\mu$ 2		
R3	1M	C3	560p	D1 D2	1N4148
R4	2k2	C4	2 $\mu$ 2	D3	CA Bi-colour LED
R5	100k	C5	560p		
R6	100R	C6	2 $\mu$ 2	TR1	100k *
R7	100k	C7	3n3		
R8	10k	C8	47 $\mu$		
R9	1k5			Fuzz	10k Anti-Log **
R10	1k5			Volume	100k Log

- \* TR1 can easily be made into a pedal mounted potentiometer by matching lugs w/ silkscreen
- \*\* A 10k antilog pot offers better control, a 10k Lin pot can also be used with great results.
- \*\*\* Try a Burr Brown IC or others like NE5532 for experimentation. Only TL072 available in kits.

## STATUS LED

D3 is a common anode bi-colour Status LED



The diagram above shows the pin-out, schematic symbol and pad connection for a common anode LED. The pin-out for the bi-colour LED is as follows:

1 <sup>st</sup> Colour Cathode	90 degree bend in the lead
Common Anode	Middle lead
2 <sup>nd</sup> Colour Cathode	45 degree bend in the lead

The pad for lead 1 on the circuit board is marked with a white box.

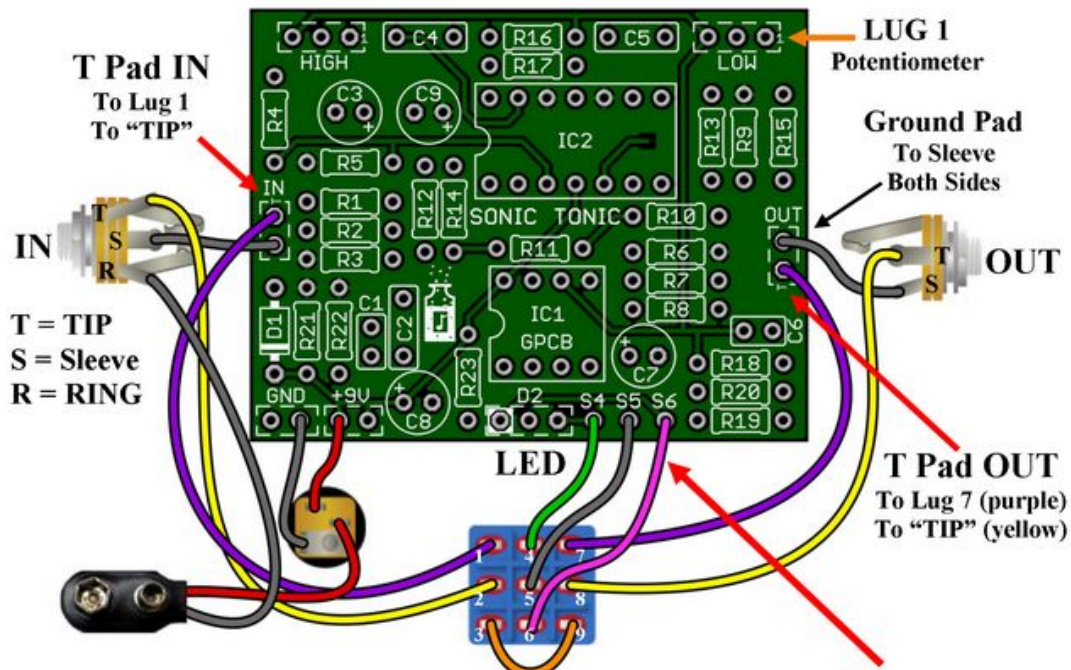
When connected correctly D3 will light red when power is applied and the circuit is in bypass mode and light green when the circuit is in effects mode.

**If you wish to use a standard LED the anode is connected to the middle pad and the cathode to the right (non-white) pad.**

## WIRING

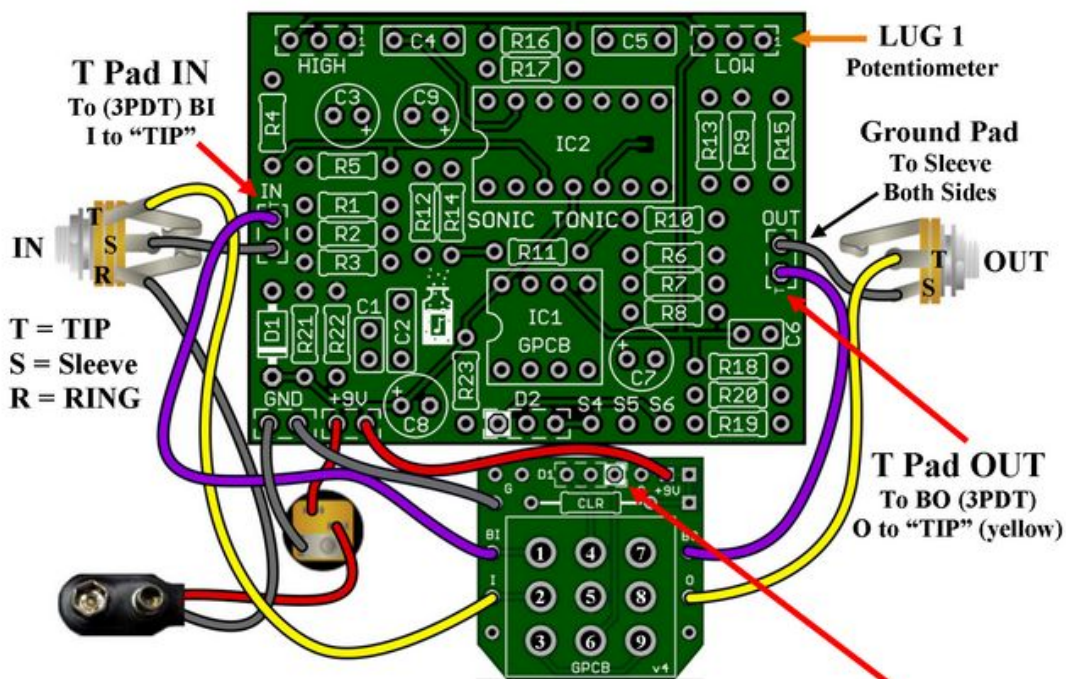
Follow the standard wiring guide below. This is identical for all GuitarPCB boards. Pay special attention to In/Out sections and use the (T) pad as shown below. Also note the small 1 in the silkscreen to indicate the potentiometer lug orientation. This multi purpose diagram shows how to wire any circuit using 2 popular methods.

### Standard & 3PDT Wiring Board



Use S4, S5 & S6 wiring when mounting Status LED on the Main Board.

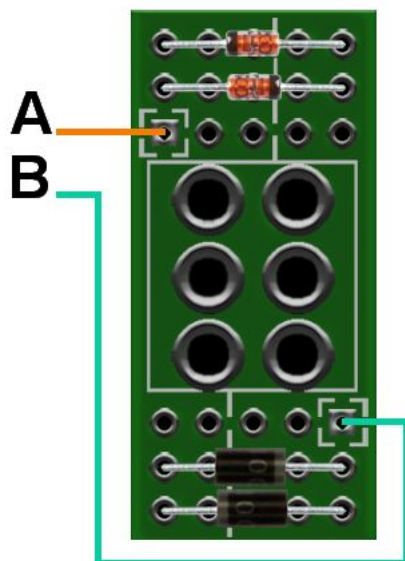
GuitarPCB Boards work with both Standard On/Off  
Or Common Anode Bi-Color Status LEDs



Ignore S4, S5 & S6 wiring when mounting Status LED on 3PDT Board.  
3PDT Boards have extra 9V & Ground pads for add-ons

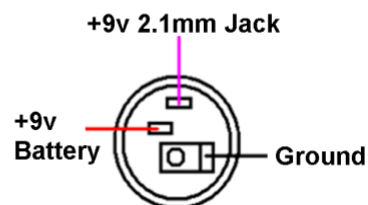
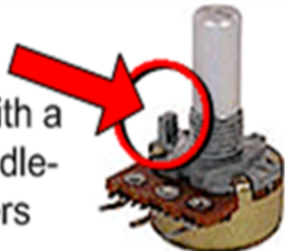
Pads A and B are included to allow diode (D1 and D2) switching modifications to be made to the circuit. When using A/B pads do not populate the Main Board clipping at D1 and D2.

The following is an example using GuitarPCB's DPDT Wiring Board available in our SHOP:



### [Soldering Tutorial on Youtube](#)

Snap off with a pair of needle-nose pliers



Need a kit? Check out our authorized worldwide distributors:

USA – Check out [PedalPartsAndKits](#) for all your GuitarPCB kit needs in the USA.

Europe – [Das Musikding](#) Order either boards or kits direct from Europe.

[PedalPartsAustralia](#) - Order either boards or kits direct from Australia

If they do not have a KIT listed send them a note asking if they can help you out.



This document, PCB Artwork and Schematic Artwork © GuitarPCB.com. Schematic, PCB and this document by Tonmann, Bruce R. and Barry. All copyrights, trademarks, and artworks remain the property of their owners. Distribution of this document is prohibited without written consent from GuitarPCB.com. GuitarPCB.com claims no rights or affiliation to those names or owners.