

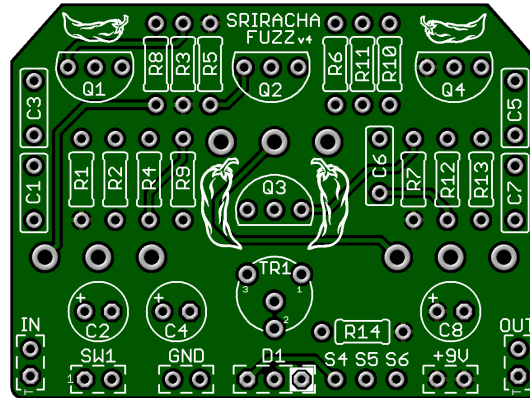
# SRIRACHA FUZZ

A **Spicy Hot Sustaining Fuzz** that is as easy to build (no biasing required) as it is to play with long sustain with lots of tonal variations. This circuit has a compressed, deep effect with absolutely amazing sustain throughout the fret board. The tone control in tandem with the fat switch was specifically designed to allow sounds ranging from warm mellow fuzz, to 70's style mid scoop to a bright fuzz that cuts through the mix.

Based on the Hot Silicon (Hot Chilicon), this improved design features:

**(3) On-Board 16mm Right Angle Pots.** You may also choose to hand wire.

Cleans up using the guitar volume for chiming powerful chords or can sustain like a Muff or anything in between.



Board Dimensions (W x H) 1.95" x 1.47"

## Bill of Materials

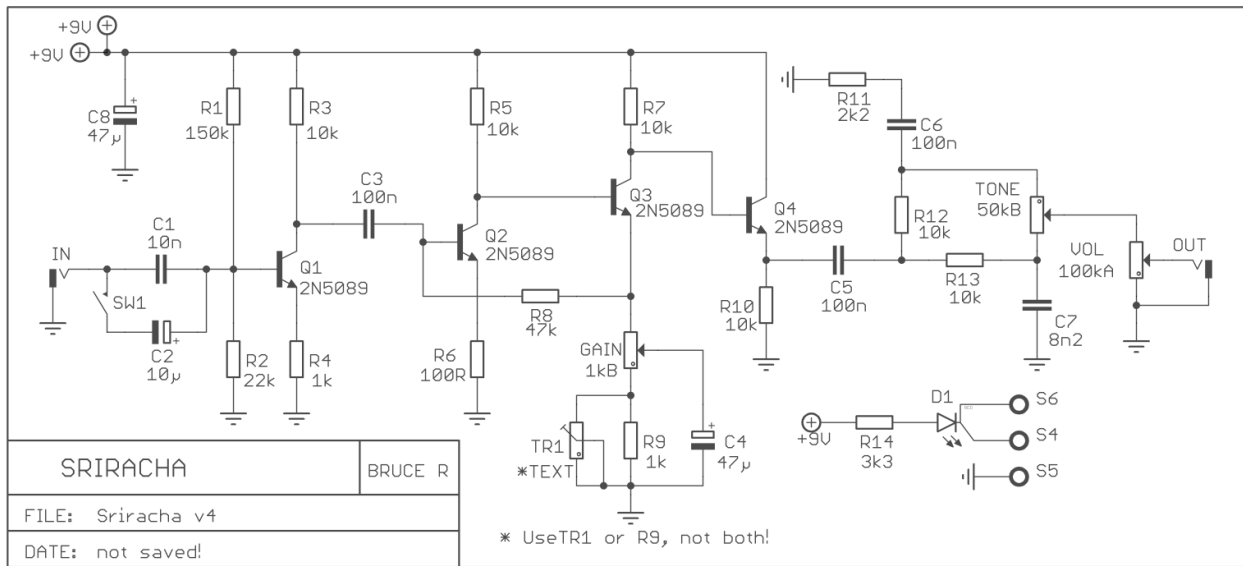
Part	Value	Part	Value	Part	Value
R1	150k	R13	10k	Q1 - Q4	2N5089
R2	22k	R14	3k3		
R3	10k			VOL	100k A
R4	1k	C1	10n	GAIN	1k B
R5	10k	C2	10u	TONE	50k B
R6	100R	C3	100n		
R7	10k	C4	47u	<b>*TR1</b>	2k Option to R9
R8	47k	C5	100n		
<b>*R9</b>	1k	C6	100n	D1	CA - BiColor LED
R10	10k	C7	8n2	SW1	SPST - Fat Switch
R11	2k2	C8	47u		
R12	10k				

### Build Notes:

\* Install R9 or TR1 but do not install both. The 2K or even 5k TR1 trimmer will add more flexibility.

\*\* Use 2N5087, 2N5088 or 2N5089 or any combination. We suggest 2N5089. Also sockets recommended.

- Chimey chords with Gain at 8:00 and Guitar Volume at 6-8. Sustains well when guitar volume turned up.
- Single coil guitars work extremely well with this circuit and can achieve a high gain sustaining fuzz.
- When using humbuckers or higher output pickups lower the gain control to 9:00 for amazing versatility.

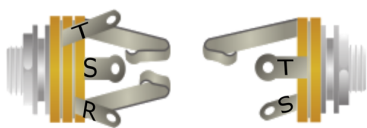
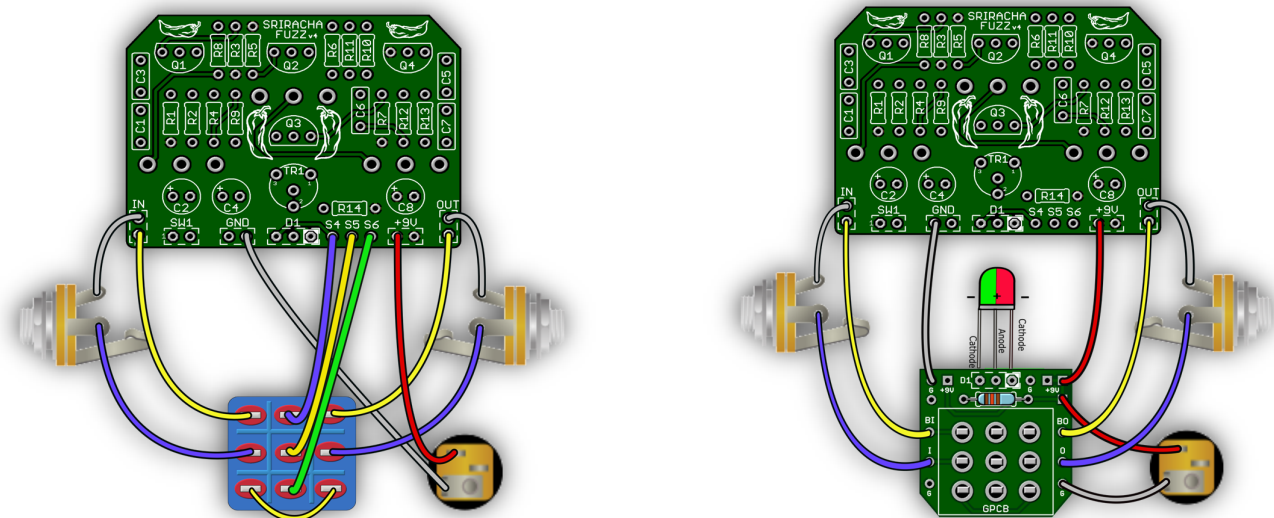


**Potentiometer Wiring:** You may use 16mm right angle pots or hand wire, your choice. We recommend drilling 5/16" min. slightly large to allow an easier fit. **The best option is to install the pots (with Pot Condoms) in the enclosure first before soldering them to the board. The board can then be removed for final testing, etc..**

**Potentiometer Sourcing:** All required Potentiometer values of 16mm Right Angle potentiometer, may be purchased at [Small Bear](#) as well as the rest of them. In Europe they are also available at [Das Musikding](#). If you are going to use **In/Out Jacks** that mount from the top we suggest [Switchcraft #111](#) which can also be purchased at Small bear in the USA or Das Musikding in Europe.

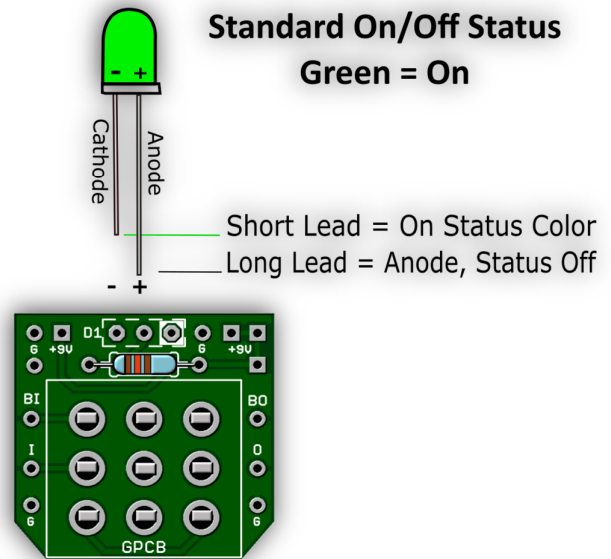
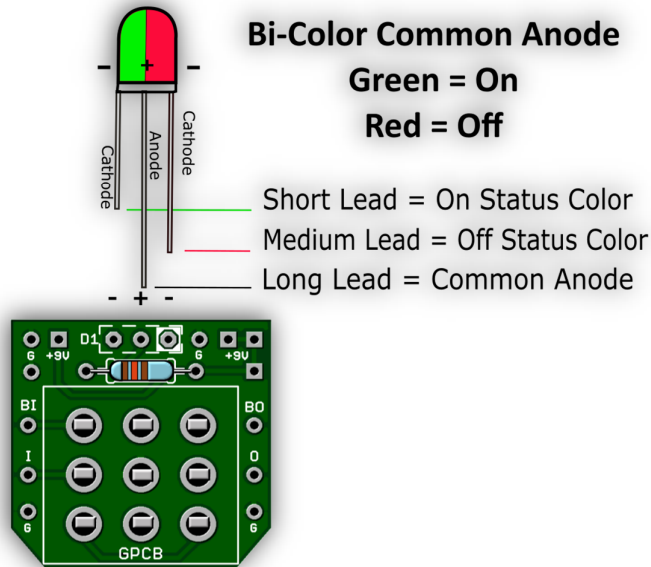
**Disclosure:** GuitarPCB is not affiliated with any of versions of this circuit that may be available commercially or any modified.

If using our convenient 3PDT Wiring Boards (below) here is an LED wiring guide. You may use Common Anode Bi-Color or Standard On/Off. The wiring boards use the same symmetrical layout as if wiring straight to the switch.



Be sure your In/Out Jack wiring is correct. A Stereo Jack (for battery use only) has a RING lug which is used to connect to the battery ground. If you do not intend to use a battery there is no need for a Stereo Jack. If using Stereo then only use the Tip and Sleeve lugs.

## STATUS LED

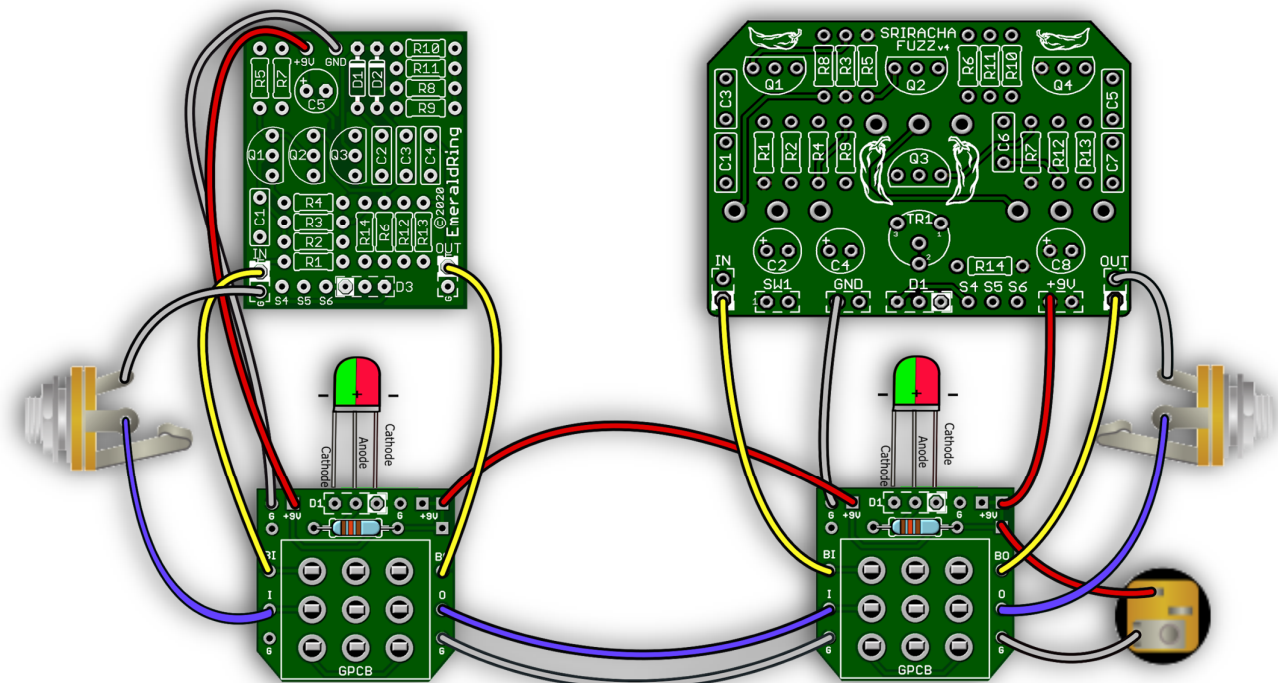


**Note:** If wiring the LED to our 3PDT board no need to connect S4, S5 & S6 or populate D1 or R14 (CLR) on the main board since you are wiring your LED directly to our board.

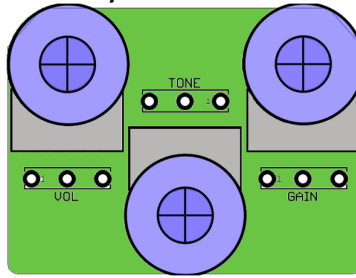
**Direct Online Link:** [3PDT Wiring Board Build Document](#)

**Populated board example:** Always use sockets and only solder pots while they are in the enclosure holes so you do not have to bend the leads adding stress to make them fit. We have included dual power and ground pads for easy combo building. This is a GuitarPCB special feature.

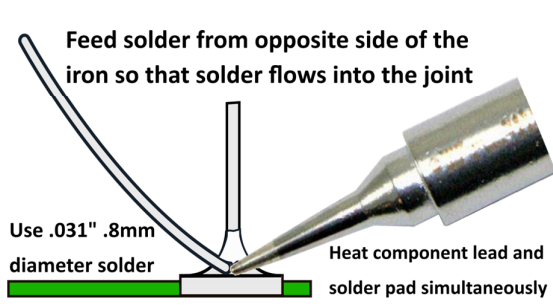
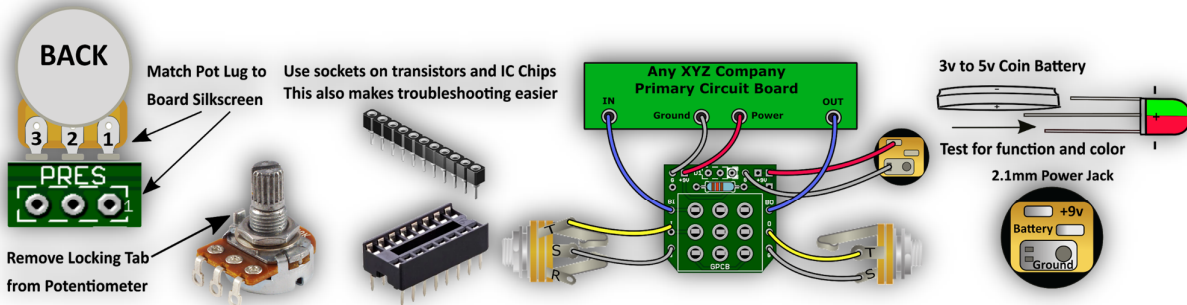
**Add an Emerald Ring Octave up and get some amazing tones not unlike Hendrix to more modern sounds.**




Drill Template: Drill at your own risk. Print at 300 resolution.




**Drill Tips:** Measure your components before selecting a drill bit. We recommend drilling the pot holes, mounting the pots in the enclosure, and then soldering the pots to the board. This approach should resolve the issue of the pots not fitting through the holes after soldering. We also recommend you make the holes for the pots a little larger than the threads in case you decide to remove the board and put it back in during the build, to avoid problems. Use this guide at your own risk. Make sure page scaling is turned off when you print this PDF, or the image above may be smaller than expected. Verify everything before drilling.



A good solder joint should be shiny and look like this: 

- \* Carefully re-flow suspect solder joints.
- \* Clean and tin your Tip regularly.

When soldering wire to the board push the protective PVC jacket flush with the board and pad. 

Use the right tools for the job and be patient.  
If you need help ask questions first at the GuitarPCB forum.  
We are there to help and we know our products best.

Need a kit? Check out our authorized worldwide distributors:  
USA – Check out [PedalPartsAndKits](#) for all your GuitarPCB kit needs in the USA.  
Europe – [Das Musikding](#) Order either boards or kits direct from Europe.  
[PedalPartsAustralia](#) - Order either boards or kits direct from Australia  
If they do not have a KIT listed send them a note asking if they can help you out.



This document, PCB Artwork and Schematic Artwork © GuitarPCB.com. Schematic, PCB and this document by Bruce R. Tonmann Wilkie1 and Barry. All copyrights, trademarks, and artworks remain the property of their owners. Distribution of this document is prohibited without written consent from GuitarPCB.com. GuitarPCB.com claims no rights or affiliation to those names or owners.