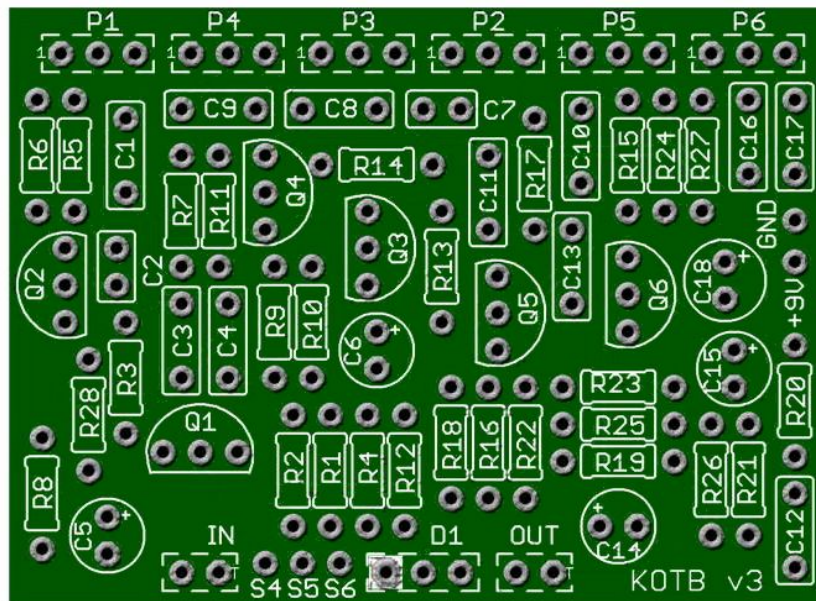


## K.O.T.B. - King of the British v3

With Master, Level, Gain, Low, Mid and High controls I doubt there is a Marshall style tone you cannot find on this excellent circuit. Note extra Volume control for even more refinement in your overall sound and tone. Based on the '67-'68 Plexi amp that was all the rage in the 1980s...but now with the KOTB you have the added Hot Rod Mod Tone. A Shredders dream circuit.

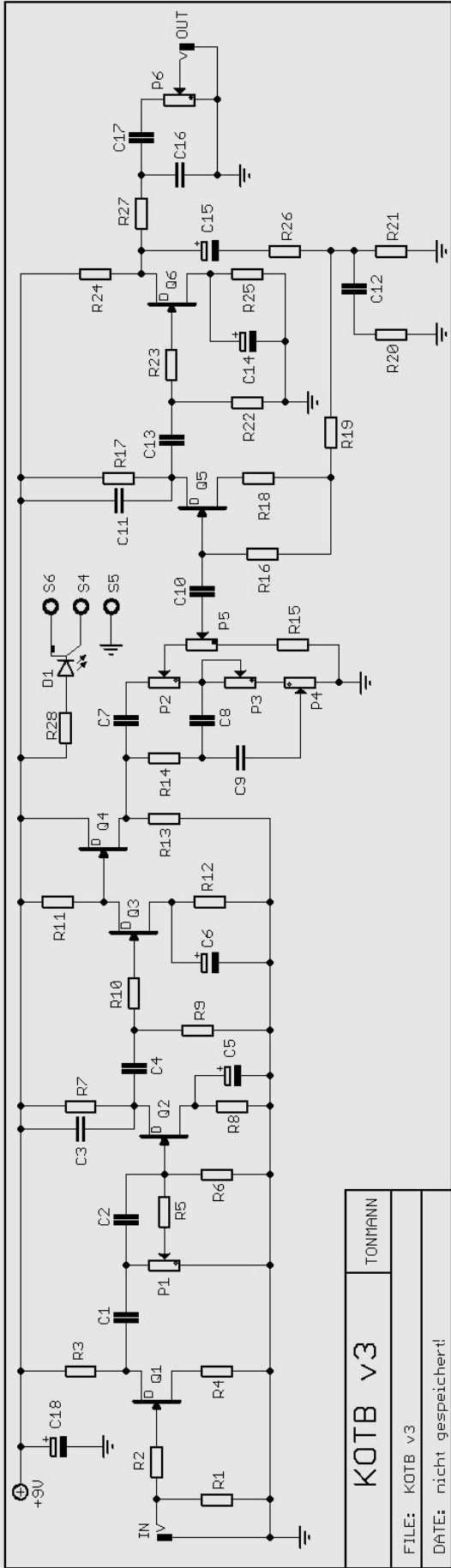


Board Dimensions (W x H) 2.2" x 1.61" ca. 56 mm x 41 mm

R1	1M	R19	1k	C1	2n2	63V	Q1 - Q6	J201
R2	33k	R20	15k	C2	560p			
R3	22k	R21	4k7	C3	10n	63V		
R4	1k8	R22	220k	C4	10n	63V	D1	CA Bi-colour LED
R5	470k	R23	2k2	C5	1 $\mu$	16V		
R6	470k	R24	3k9	C6	2 $\mu$ 2	16V	P1 GAIN	1M Lin
R7	22k	R25	470R	C7	560p		P2 HIGH	250k Log
R8	1k8	R26	100k	C8	22n	63V	P3 LOW	1M Log
R9	470k	R27	6k8	C9	22n	63V	P4 MID	25k Log
R10	470k	R28	2k2	C10	22n	63V	P5 MASTER	1M Lin
R11	15k			C11	1n	63V	P6 LEVEL	250k Log
R12	1k			C12	100n	63V		
R13	100k			C13	22n	63V		
R14	33k			C14	10 $\mu$	16V		
R15	100k			C15	10 $\mu$	16V		
R16	1M			C16	10n	63V		
R17	15k			C17	10n	63V		
R18	1k			C18	100 $\mu$	16V		

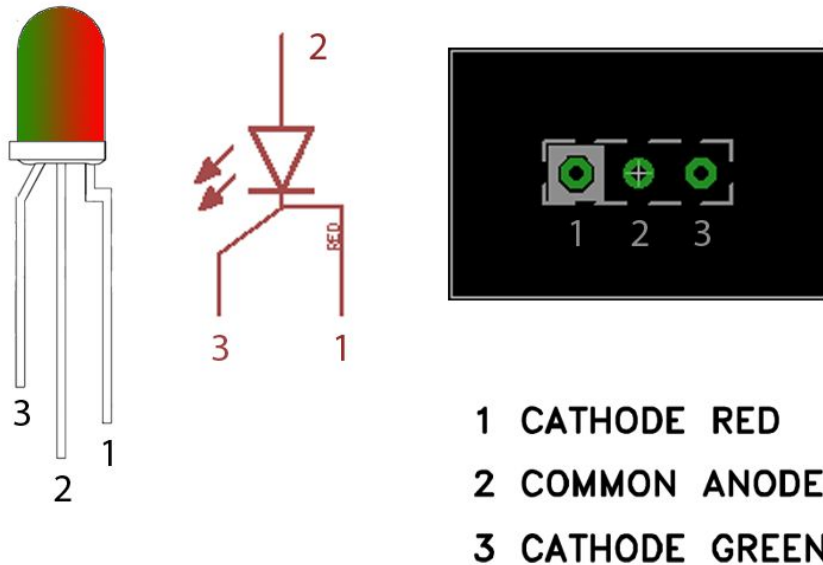
**Note:** The Gain control is a minor refinement in your overall drive tone. This is subtle and meant as a fine adjustment for guitars with either "Hot" or "Vintage" wound pickups. This pedal is designed to replicate a hot-rodded Marshall and that is what you should expect. Adjusting Gain can also done with your Guitar Volume. If your guitar volume is always on 10 then there will not be a huge range between Gain settings on the pedal. One of the best hot rod sounds we have heard!

# SCHEMATIC



## STATUS LED

D1 is a common anode bi-colour LED



The diagram above shows the pin-out, schematic symbol and pad connection for a common anode LED. The pad for lead 1 on the circuit board is marked with a white box.

When connected correctly the LED will light red when power is applied and the circuit is in bypass mode. The LED will light green when in effects mode.

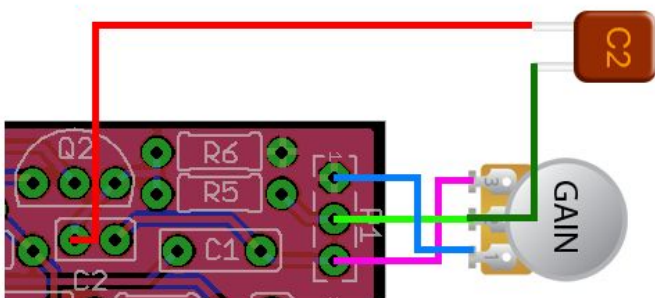
If you wish to use a standard LED, connect the anode to the middle pad and the cathode to the right pad (non-white) to show the circuit in effects mode.

### **Mod:**

There may well be some who would like to experiment or change back to the V2 version.

The first option is to leave C2 out of circuit completely - this would give a flat standard frequency response with full attenuation from P1.

The second option is to revert back to the V2 circuit (see below):



### **Voltages taken from a properly functioning circuit for troubleshooting.**

Q1 5.25, .53, 0

Q2 4.87, .48, 0

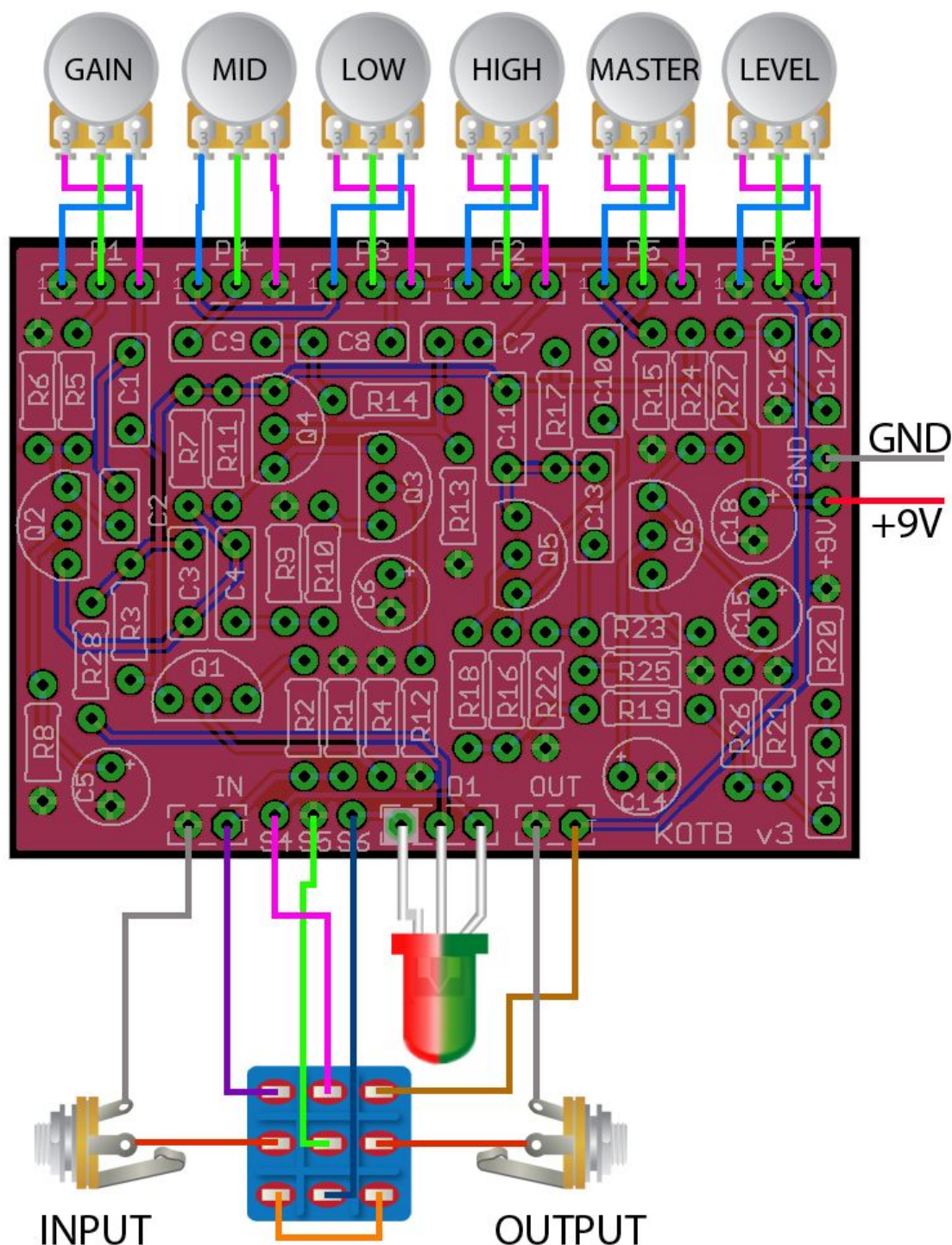
Q3 .62, 0, 0

Q4 8.82, 1.38, .62,

Q5 4.52, 1.81, 1.2

Q6 6.93, .22, 0

## WIRING



If you are using one of GuitarPCB's 3PDT Wiring Boards, pads S4, S5, S6 and D1 would be ignored and R28 would not be installed.

**Build Note:** The best way to achieve larger degrees of distortion is by using your guitar volume control (reducing the output of your pickup) as it will start to clean up nicely on 5 to 7 in the rotation. This should easily allow you to tame or let loose the beast using your guitar pickups and their applicable volume control much in the manner Jeff Beck would. This circuit has a killer hot rod tone!

It is very important that you use "genuine" J201 transistors and avoid counterfeits on eBay. Small Bear in the USA sells genuine products if not available in our SHOP.

## [Soldering Tutorial on Youtube](#)

Need a kit? Check out our authorized worldwide distributors:

USA – Check out [PedalPartsAndKits](#) for all your GuitarPCB kit needs in the USA.

Europe – [Das Musikding](#) Order either boards or kits direct from Europe.

[PedalPartsAustralia](#) - Order either boards or kits direct from Australia

If they do not have a KIT listed send them a note asking if they can help you out.



This document, PCB Artwork and Schematic Artwork © GuitarPCB.com. Schematic, PCB and this document by Tonmann, Bruce R. and Barry. All copyrights, trademarks, and artworks remain the property of their owners. Distribution of this document is prohibited without written consent from GuitarPCB.com. GuitarPCB.com claims no rights or affiliation to those names or owners.