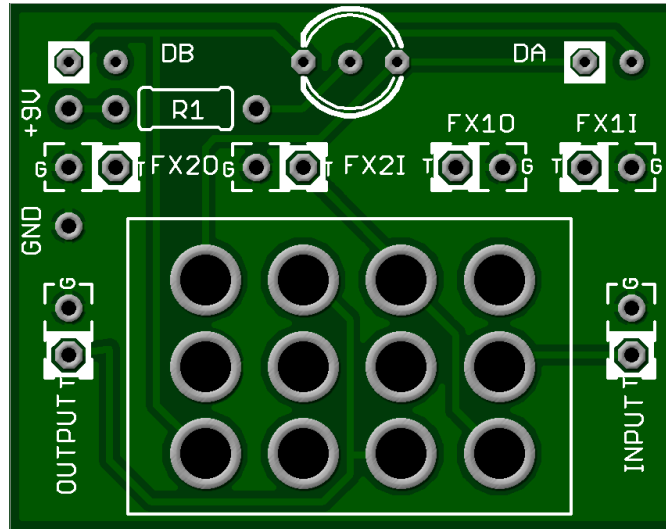


Easy Order Switching Board - 4PDT Version with Foot Switch & LED

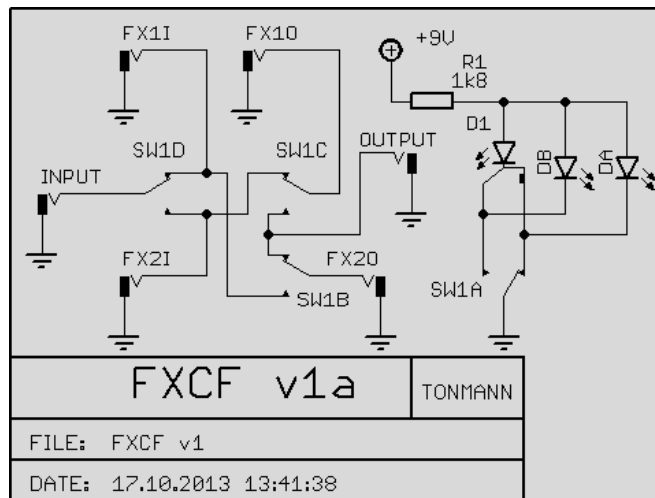
This is a small order switching circuit that allows you to change the order of two external circuits or internal circuits. Switching is achieved via a 3PDT On-On solder lug toggle switch.

- Switch the order of the overdrive circuits and use in tandem!
- Set the Boost to follow the Overdrive or cascade into it.
- With a Boost following an Overdrive you get an increase in Volume.
- With a Boost preceding the Overdrive you get an increase in Distortion

Starting to see the potential? Make your build stand out in the crowd and make it boutique.

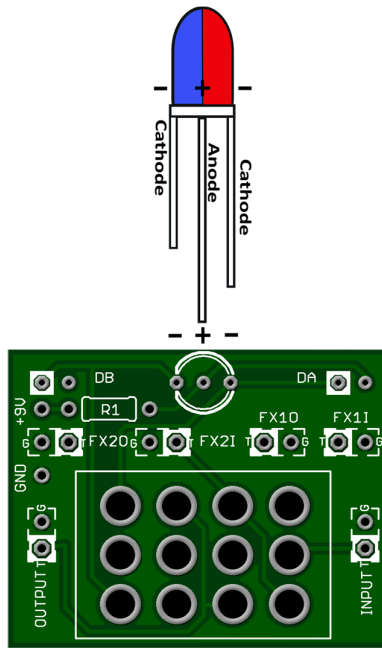


Board Dimensions (W x H) 1.43" x 1.13" ca. 36.2 mm x 28.6mm

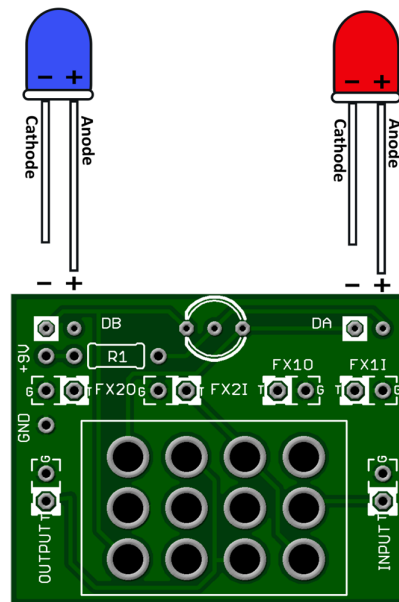


R1	1k8 to 4k - CLR
D1	CA Bi-colour LED*
DA	LED *
DB	LED *
SW1	4PDT Footswitch

*Either D1 or a combination of DA / DB is used for status switching. See our SHOP for 4PDT Footswitch.



Using a Common Anode Bi-colored LED as shown above will result in the Red LED lighting when the effects order is FX1 – FX 2 and the Blue LED lighting when the effects order is FX2 – FX1.

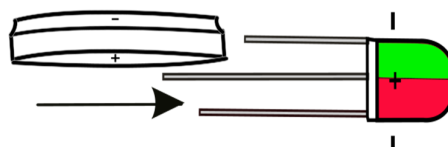


The bi-colored LED can be replaced with two standard LEDs as above Red is FX1 – FX2 and Blue is FX2 – FX1. Another alternative is to use just a single LED.

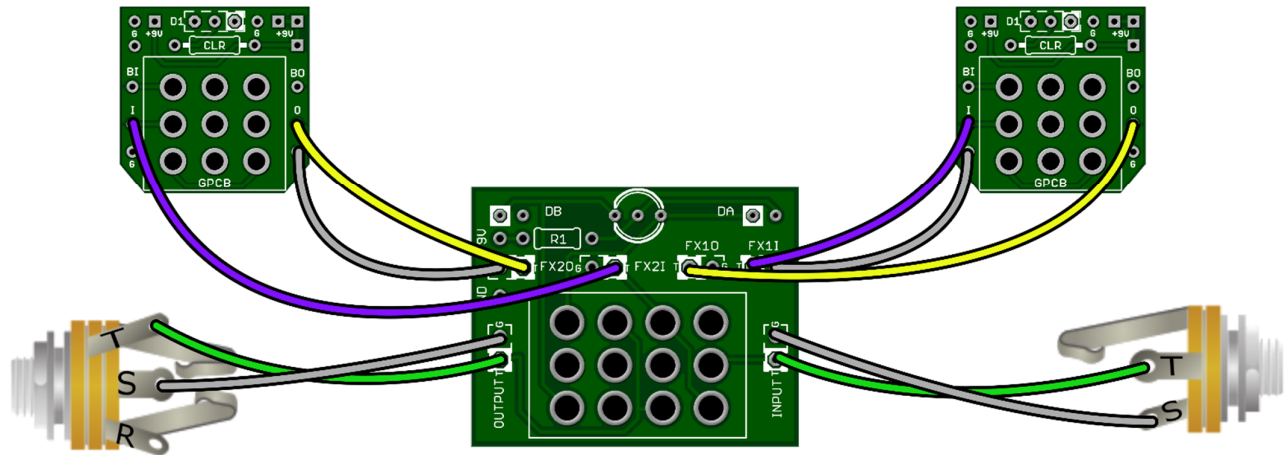
When the 4PDT footswitch is in the Engaged position (1) the effects order is FX 1 →FX2, in the Engaged (2) position it is FX2 →FX1. If the Easy Order switching board is utilized inside a combo build then discount the top for jacks as shown above and connect the wiring to the input and output of each circuit board. An example would be an Overdrive and Boost inside a single enclosure. You would be able to change the effect order with the flip of a switch.

Insert the LED leads into the corresponding pads as shown in the previous example.

TIP: Use a 3v to 5v coin battery to test your LED before installing. Note: 9v direct without a CLR will blow the LED.



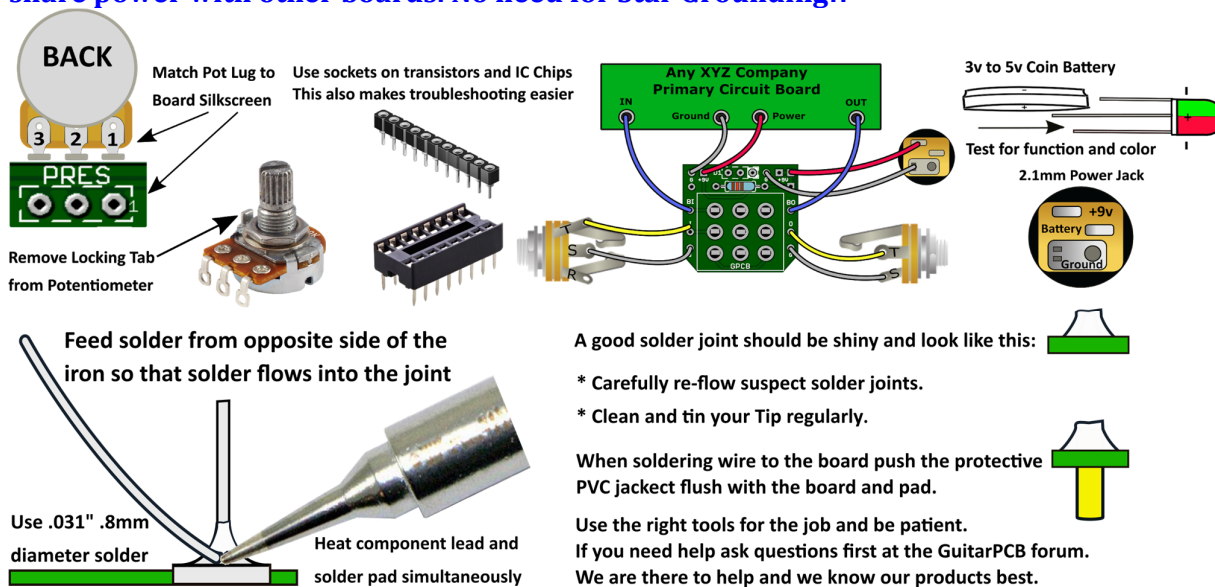
To Circuit Board 1



To Circuit Board 2



Using our 3PDT Wiring Boards in tandem with the Easy Order Switch makes it easy and neat to share power with other boards. No need for Star Grounding!!



Need a kit?

USA – Check out [PedalPartsAndKits](http://PedalPartsAndKits.com) for all your needs.

Europe – [Das Musikding](http://DasMusikding.com) carries both boards and kits as a service to our Europeans friends.

Australia - PedalPartsAustralia.com carries GuitarPCB Boards and Kits direct.

If they do not have a KIT listed send them a note asking if they can help you out.

[Soldering Tutorial on Youtube](http://SolderingTutorialonYoutube.com)



This document, PCB Artwork and Schematic Artwork © GuitarPCB.com. Schematic, PCB and this document by Bruce R and Barry. All copyrights, trademarks, and artworks remain the property of their owners. Distribution of this document is prohibited without written consent from GuitarPCB.com. GuitarPCB.com claims no rights or affiliation to those names or owners.