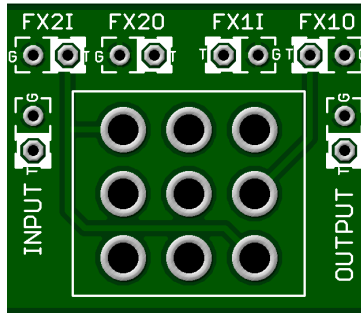


Easy Order Switching Board - 3PDT Toggle Switch Version

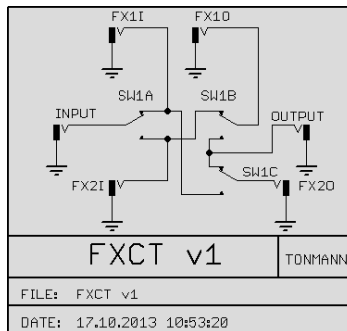
The FXCT is a small order switching circuit that allows you to change the order of two external circuits or internal circuits. Switching is achieved via a 3PDT On-On solder lug toggle switch.

- Switch the order of the overdrive circuits and use in tandem!
- Set the Boost to follow the Overdrive or cascade into it.
- With a Boost following an Overdrive you get an increase in Volume.
- With a Boost preceding the Overdrive you get an increase in Distortion

Starting to see the potential? Make your build stand out in the crowd and make it boutique.

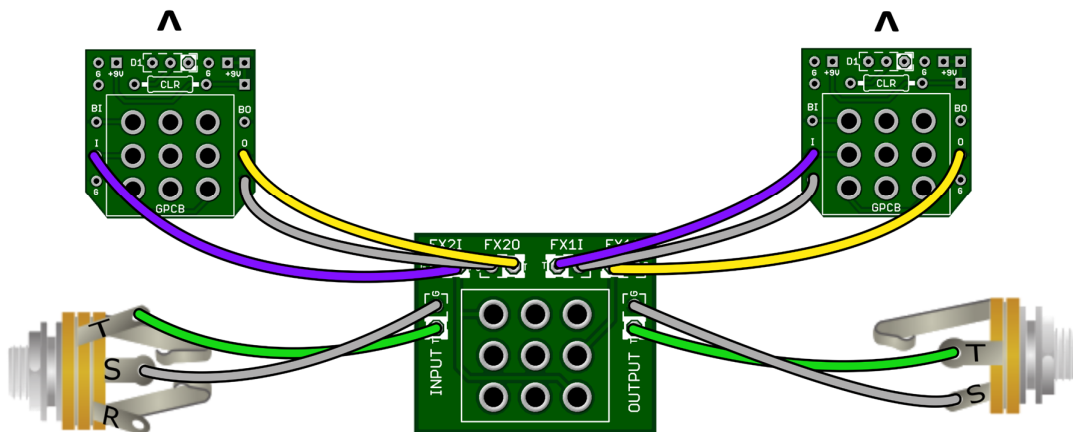


Board Dimensions only (W x H) 1.1" x 0.9" ca. 28 mm x 23 mm

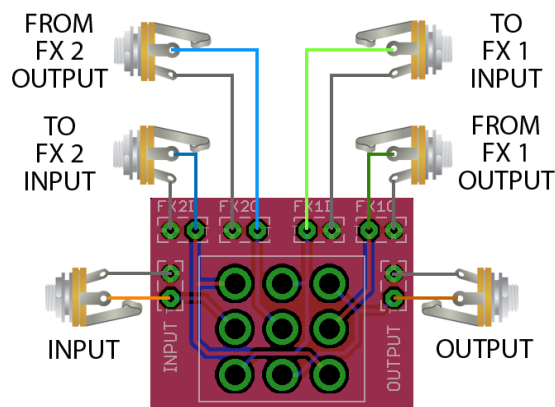


To Circuit Board 1

To Circuit Board 2

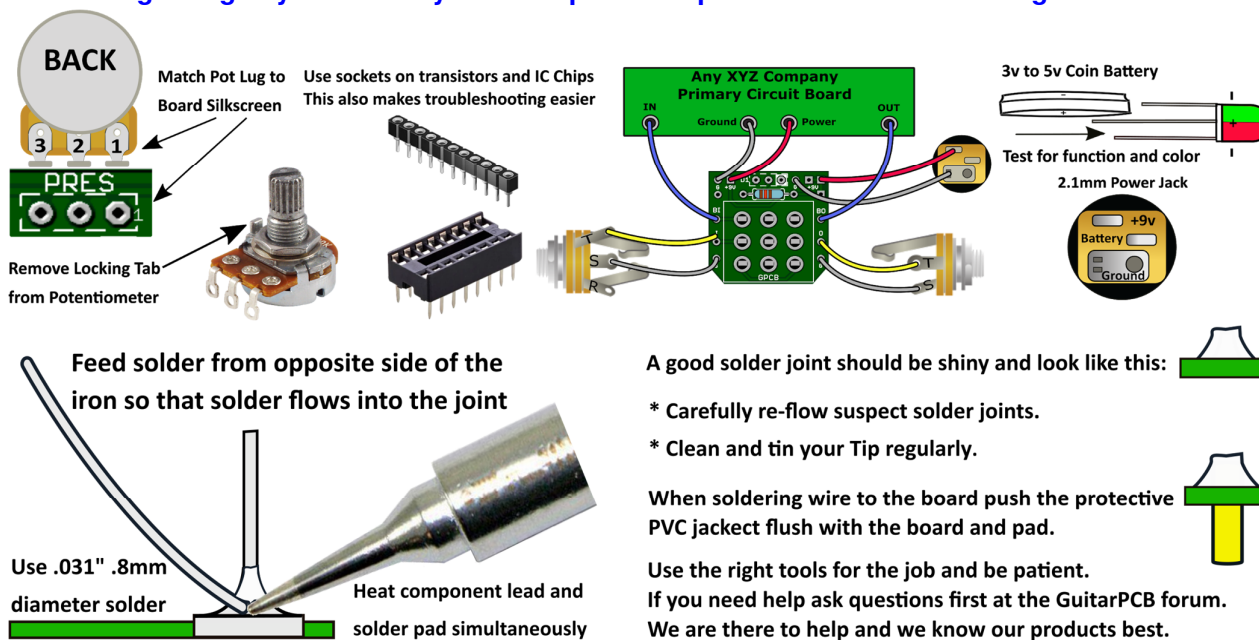


Create a switchable loop:



When the 3PDT On-On toggle switch is in the UP position (looking at the top side of the board) the effects order is FX 1 → FX2, in the DOWN position it is FX2 → FX1. If the Easy Order switching board is utilized inside a combo build then discount the top for jacks and connect the wiring to the input and output of each circuit board. An example would be an Overdrive and Boost inside a single enclosure. You would be able to change the effect order with the flip of a switch.

Before beginning any build or if you have questions please see our Guides Page on our site.



How to [Build a Combo Pedal Guide](#) by Playsforfun

Build Documents and Demos may be viewed in the [PCB Shop](#) without needing Free Membership.
[Soldering Tutorial on Youtube](#)

Need a kit? Check out our authorized worldwide distributors:

USA – Check out [PedalPartsAndKits](#) for all your GuitarPCB kit needs in the USA.

Europe – [Das Musikding](#) Order either boards or kits direct from Europe.

[PedalPartsAustralia](#) - Order either boards or kits direct from Australia

If they do not have a KIT listed send them a note asking if they can help you out.



This document, PCB, Artwork and Schematic Artwork © GuitarPCB.com. Schematic and PCB design by Bruce R. and Tonmann. Build Document by Bruce R. and Barry. All copyrights, trademarks, and artworks remain the property of their owners. Distribution of this document is prohibited without written consent from GuitarPCB.com. GuitarPCB.com claims no rights or affiliation to those names or owners.