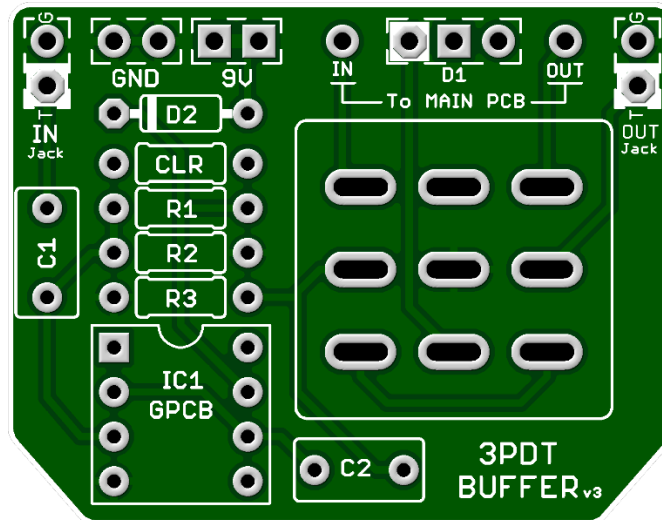


3PDT BUFFER Board v3 2021

This is our highest quality Buffer which incorporates an Opamp and can be added to any circuit in the same space as your 3PDT Foot Switch. Long cable runs and too many true bypass pedals demand our 3PDT Buffer Board so your pedal build will sound its absolute best.



Part	Value
R1	1M
R2	1M
R3	100k
CLR	1k8
SW1	3PDT FS

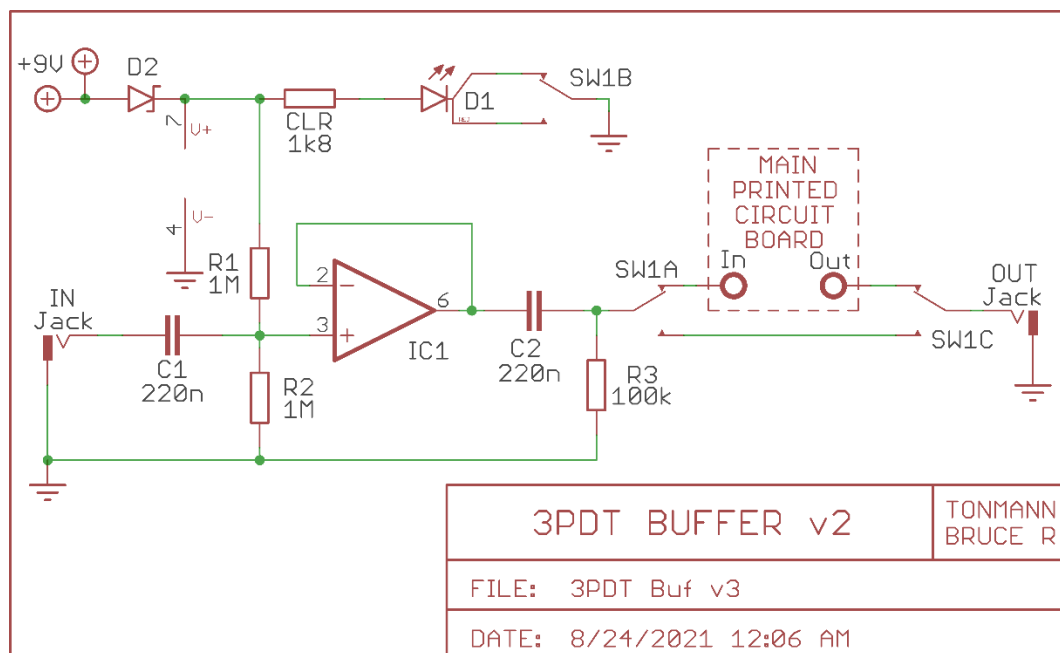
Part	Value
C1	220n
C2	220n
D1	Status LED
D2	1n5817
IC1	TL071

STATUS LED

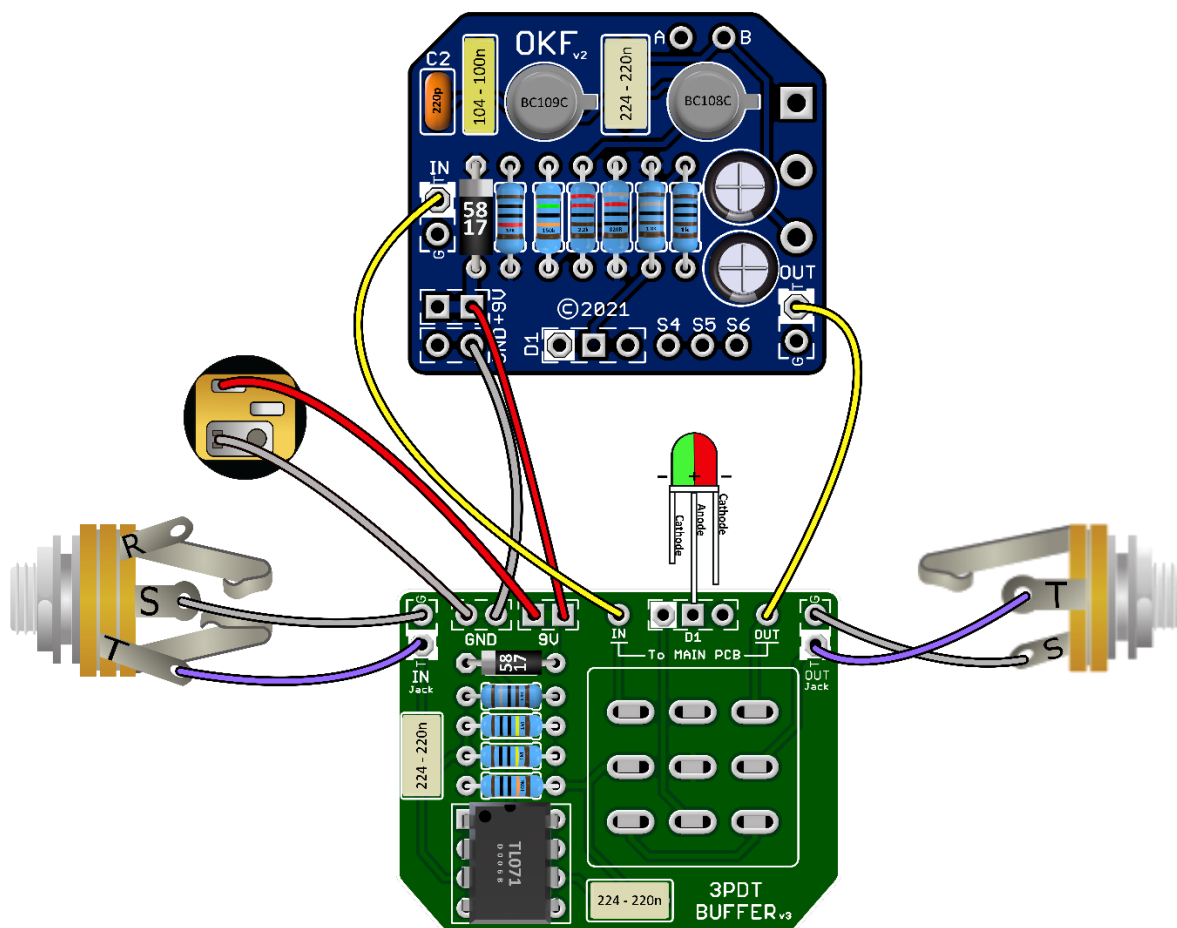
*D1 is a Status LED that can be either a Bi-Color Common Anode or a Standard On/Off LED. (See Tip Sheet)

New in this GuitarPCB 2021 version release:

- Slot Pads for 3PDT Foot Switch
- Added 1N5817 circuit protection diode.
- Larger off-board wiring pads.
- New labeling with extra pads to connect power and ground easily to your pedal circuit.



Wiring Diagram

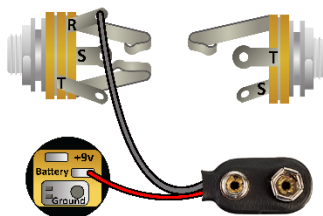
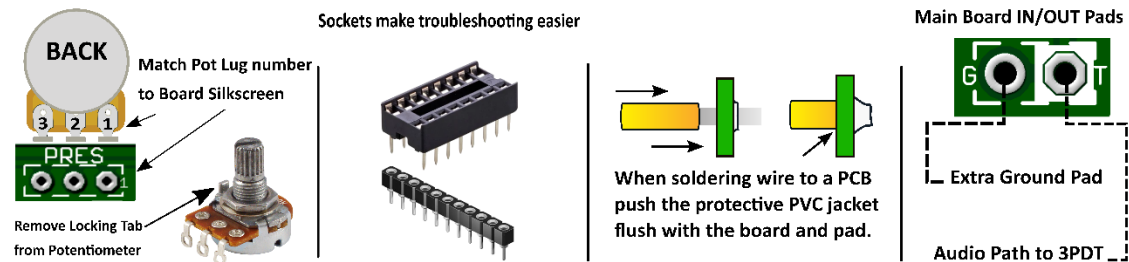
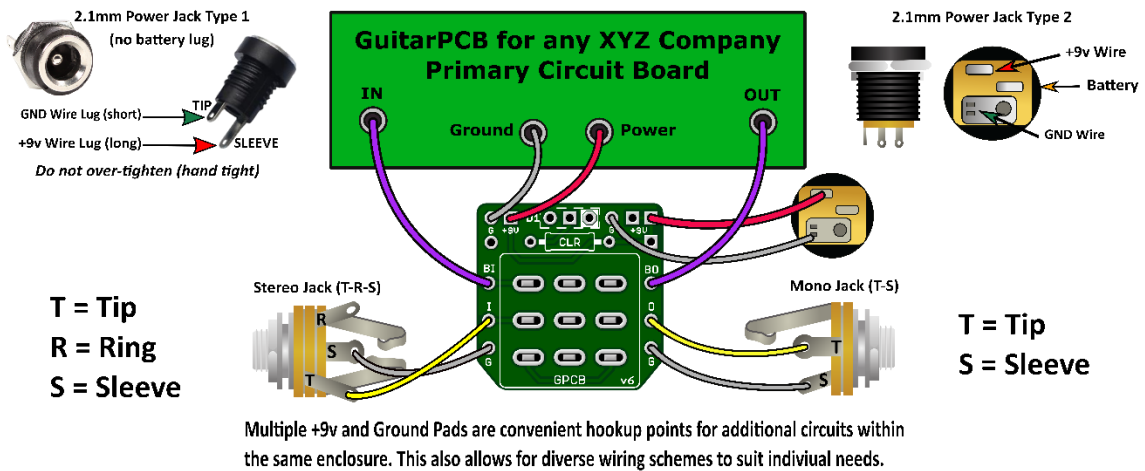
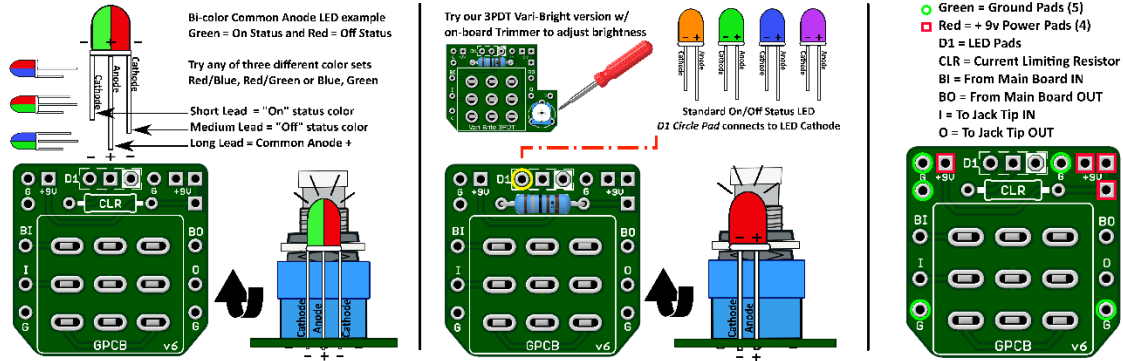


STATUS LED

If using our 3PDT Buffer board for the LED, you should omit wires and parts from S4, S5 & S6, and (CLR) Main Board. The CLR and LED will be populated on the 3PDT Buffer board instead.



GuitarPCB Tip Sheet



Input/Output Jack Wiring

T = Tip | R = Ring | S = Sleeve

A Stereo Jack is only needed if using a Battery. Otherwise use a Mono Jack
Battery Strap RED wire is connected to Power Jack
Battery Strap Black wire is connected to RING (stereo jack)
If wiring an LED to our 3PDT Wiring Board then S4, S5 & S6 are not needed



This Build Document, PCB, Artwork and Schematic image are property of @GuitarPCB.com
All copyrights, trademarks and artworks remain the property of their owners.
Any company or product names used are for identification and educational purposes only.
GuitarPCB is in no way affiliated with any said companies and are not to be misrepresented.